



**Census of India 2011**

**JAMMU & KASHMIR**

**SERIES-02**

**PART XII-B**

**DISTRICT CENSUS HANDBOOK**  
**KARGIL**

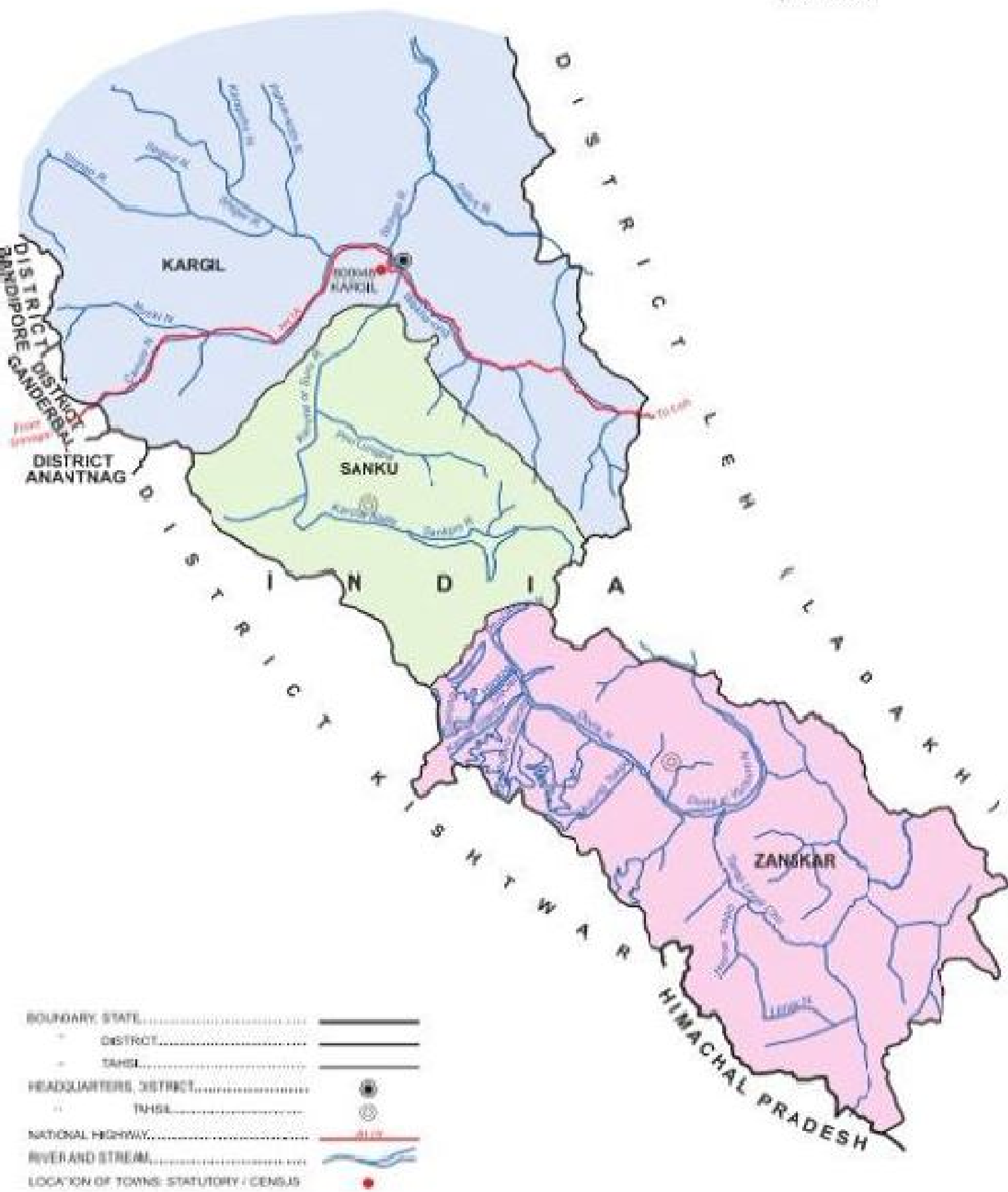
**VILLAGE AND TOWN WISE**  
**PRIMARY CENSUS ABSTRACT (PCA)**



**DIRECTORATE OF CENSUS OPERATIONS**  
**JAMMU & KASHMIR**



JAMMU & KASHMIR  
**DISTRICT KARGIL**  
 (NOTIONAL)



Note - District Headquarters of Kargil is also taluk headquarters of Kargil taluk.



**CENSUS OF INDIA 2011**

**JAMMU & KASHMIR**

**SERIES-02**

**PART XII - B**

**DISTRICT CENSUS HANDBOOK**

**KARGIL**

**VILLAGE AND TOWN WISE  
PRIMARY CENSUS ABSTRACT (PCA)**



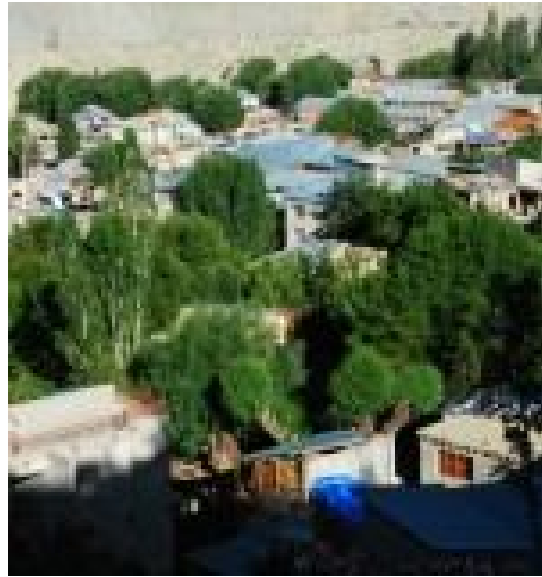
2011

**Directorate of Census Operations  
JAMMU & KASHMIR**

## MOTIF



Busy Main Road Kargil



Houses-Tress Kargil



Kargil Town



Mountains of Kargil

# Contents

		Pages
1	Foreword	1
2	Preface	3
3	Acknowledgement	4
4	History and Scope of the District Census Handbook	6
5	Brief History of the District	8
6	Administrative Setup	10
7	District Highlights - 2011 Census	11
8	Important Statistics	12
9	<b>Section - I Primary Census Abstract (PCA)</b>	
	(i) Brief note on Primary Census Abstract	16
	(ii) District Primary Census Abstract	21
	(iii) Appendix to District Primary Census Abstract Total, Scheduled Castes and Scheduled Tribes Population - Urban Block wise	29
	(iv) Primary Census Abstract for Scheduled Castes (SC)	33
	(v) Primary Census Abstract for Scheduled Tribes (ST)	41
	(vi) Rural PCA-C.D. blocks wise Village Primary Census Abstract	49
	(vii) Urban PCA-Town wise Primary Census Abstract	105
10	<b>Section -II Tables based on Households Amenities and Assets (Rural /Urban) at District and Sub-District level.</b>	
	(i) Table -1: Households by Ownership status and by Number of Dwelling rooms occupied in the District, 2011	115

(ii)	Table -2:	Percentage distribution of Households living in Permanent, Semi permanent and Temporary houses, 2011	116
(iii)	Table -3:	Number and Percentage of Households by main source of Drinking water, 2011	118
(iv)	Table -4:	Number and Percentage of Households by main source of Lighting, 2011	120
(v)	Table -5:	Number and Percentage of Households by type of Latrine facility, 2011	122
(vi)	Table -6:	Number and Percentage of Households by type of Drainage connectivity for waste water outlet, 2011	124
(vii)	Table -7:	Number and Percentage of Households by availability of Kitchen facility, 2011	125
(viii)	Table -8:	Number and Percentage of Households by type of fuel used for Cooking, 2011	126
(ix)	Table -9:	Number and Percentage of Households availing Banking services and number of Households having each of the specified Assets, 2011	128

## FOREWORD

The District Census Handbook (DCHB) is an important publication of the Census Organization since 1951. It contains both Census and non Census data of urban and rural areas for each District. The Census data provide information on demographic and socio-economic characteristics of population at the lowest administrative unit i.e. of each Village, Town and Ward of the District. The Primary Census Abstract (PCA) part of this publication contains Census data including data on household amenities collected during 1<sup>st</sup> phase of the Census i.e. House Listing and Housing Census. The non Census data presented in the DCHB is in the form of Village Directory and Town Directory contain information on various infrastructure facilities available in the village and town viz; education, medical, drinking water, communication and transport, post and telegraph, electricity, banking, and other miscellaneous facilities. Later on, the Telegraph Services were closed by the Government of India on 15<sup>th</sup> July, 2013. The data of DCHB are of considerable importance in the context of planning and development at the grass-root level.

2. In the 1961 Census, DCHB provided a descriptive account of the District, administrative statistics, Census tables and Village and Town Directory including Primary Census Abstract. This pattern was changed in 1971 Census and the DCHB was published in three parts: Part-A related to Village and Town Directory, Part-B to Village and Town PCA and Part-C comprised analytical report, administrative statistics, District Census tables and certain analytical tables based on PCA and amenity data in respect of Villages. The 1981 Census DCHB was published in two parts: Part-A contained Village and Town Directory and Part-B the PCA of Village and Town including the SCs and STs PCA up to Tahsil/Town levels. New features along with restructuring of the formats of Village and Town Directory were added. In Village Directory, all amenities except electricity were brought together and if any amenity was not available in the referent Village, the distance in broad ranges from the nearest place having such an amenity, was given.

3. The pattern of 1981 Census was followed by and large for the DCHB of 1991 Census except the format of PCA. It was restructured. Nine-fold industrial classification of main workers was given against the four-fold industrial classification presented in the 1981 Census. In addition, sex wise population in 0-6 age group was included in the PCA for the first time with a view to enable the data users to compile more realistic literacy rate as all children below 7 years of age had been treated as illiterate at the time of 1991 Census. One of the important innovations in the 1991 Census was the Community Development Block (CD Block) level presentation of Village Directory and PCA data instead of the traditional Tahsil/Taluk/PS level presentation.

4. As regards DCHB of 2001 Census, the scope of Village Directory was improved by including some other amenities like banking, recreational and cultural facilities, newspapers & magazines and 'most important commodity' manufactured in a Village in addition to prescribed facilities of earlier Censuses. In Town Directory, the statement on Slums was modified and its coverage was enlarged by including details on all slums instead of 'notified slums'.



5. The scope and coverage of Village Directory of 2011 DCHB has been widened by including a number of new amenities in addition to those of 2001. These newly added amenities are: Pre-Primary School, Engineering College, Medical College, Management Institute, Polytechnic, Non-formal Training Centre, Special School for Disabled, Community Health Centre, Veterinary Hospital, Mobile Health Clinic, Medical Practitioner with MBBS Degree, Medical Practitioner with no degree, Traditional Practitioner and faith Healer, Medicine Shop, Community Toilet, Rural Sanitary Mart or Sanitary Hardware Outlet in the Village, Community Bio- gas, Sub Post Office, Village Pin Code, Public Call Office, Mobile Phone Coverage, Internet Cafes/ Common Service Centre, Private Courier Facility, Auto/Modified Autos, Taxis and Vans, Tractors, Cycle-pulled Rickshaws, Carts driven by Animals, Village connected to National Highway, State Highway, Major District Road, and Other District Road, Availability of Water Bounded Macadam Roads in Village, ATM, Self-Help Group, Public Distribution System(PDS) Shop, Mandis/Regular Market, Weekly Haat, Agricultural Marketing Society, Nutritional Centers (ICDS), Anganwadi Centre, ASHA (Accredited Social Health Activist), Sports Field, Public Library, Public Reading Room, Assembly Polling station, Birth & Death Registration Office. In the Town Directory, seven Statements containing the details and the data of each Town have been presented viz.: (i) Status and Growth History of Towns, (ii) Physical Aspects and Location of Towns, (iii) Civic and other Amenities (iv) Medical Facilities, (v) Educational, Recreational & Cultural Facilities, (vi) Industry & Banking, and (vii) Civic & other amenities in Slums respectively. CD Block wise data of Village Directory and Village PCA have been presented in DCHB of 2011 Census as presented in earlier Census.

6. The data of DCHB 2011 Census have been presented in two parts, Part-A contains Village and Town Directory and Part-B contains Village and Town wise Primary Census Abstract. Both the Parts have been published in separate volumes in 2011 Census.

7. The Village and Town level amenities data have been collected, compiled and computerized under the supervision of C.S. Sapru, Joint Director of Census Operation, Jammu and Kashmir. The task of Planning, Designing and Co-ordination of this publication was carried out by Dr. Pratibha Kumari, Assistant Registrar General (SS) under the guidance & supervision of Dr. R.C.Sethi, Ex-Addl. RGI and Shri Deepak Rastogi present Addl.RGI. Shri A.P. Singh, Deputy Registrar General, (Map) provided the technical guidance in the preparation of maps. Shri A.K. Arora, Joint Director of Data Processing Division under the overall supervision of Shri M.S.Thapa, Addl. Director (EDP) provided full cooperation in preparation of record structure for digitization and validity checking of Village and Town Directory data and the programme for the generation of Village Directory and Town Directory including various analytical inset tables as well as Primary Census Abstract (PCA). The work of preparation of DCHB, 2011 Census has been monitored in the Social Studies Division. I am thankful to all of them and others who have contributed to bring out this publication in time.

(C.Chandramouli)  
Registrar General &  
Census Commissioner, India

New Delhi.

Dated:- 16-06-2014

## Preface

The compilation and Publication of District Handbooks has been a traditional feature of the Indian Census since 1951. However in Jammu and Kashmir State, no census was conducted in 1951 and 1991 due to the unavoidable conditions prevailing then. The 2011 series of District census handbook contain two parts each. Part-A deals with Town and Village directory and Part B consists of Town and Village-wise Primary Census Abstract etc. The village also follows the same pattern as in 2001. It is hoped that with its present content the Handbook would, more than ever, serve as a useful reference publication, particularly for administrators and data users as have to deal with planning, implementation and evaluation of development programmes including the Minimum Needs Programme at the Grass Root level. The compilation of the Handbook would not have been possible but for the cooperation extended by the Revenue, Education, Medical, Public Health and other local authorities of the District in making data available for which I owe them my grateful thanks.

The Census -2011 was successfully conducted in the State under the able stewardship of Sh. Farooq Ahmed Factoo, IAS, Director Census Operations, J&K, who had to work very hard to see the operations of Census through in the State under the disturbed conditions prevailing in the State. The data presented in this volume has been collected and Tabulated under his supervision and control.

I am highly grateful to C. Chandermoulli, IAS, Additional Secretary to Government of India under whose stewardship the District Census Handbook has been finalized. I am also thankful A.K.Singh DRG (C&T) and Smt Pratibha Kumari ARG (SS) who extended valuable suggestions from time to time.

(C.S.Sapru)  
Joint Director of Census Operations  
Jammu and Kashmir

## Acknowledgements

### Editing:

- Mehru Rafiq Jr.Consultant
- Zameer Ahmad Jr.Consultant

### Scrutinizing of Village &Town Directory Data

- Mehru rafiq Jr.Consultant
- Zameer Ahmad Jr.Consultant

### Compilation of Data

- Mehru Rafiq Jr.Consultant
- Zameer Ahmad Jr.Consultant

### CRC By

#### Computer work/Generation of Tables

- Sh.Ashutosh Kumar SIG-II

### Assisted By

- Mehru Rafiq Jr.Consultant
- Junida Shah Jr.Consultant

### Map:

- Bilal Ahmed NAJAR Jr.Consultant
- Irshad Ahmed Ganai Jr.Consultant

**Photostat:**

•Mohd Amin

MTS

**ORGI- Data Processing Division**

Shri Jaspal Singh Lamba,  
Ms. Usha,  
Shri Anurag Gupta,  
Shri Mukesh Kumar Mahawar,  
Ms. Shagufta Nasreen Bhat,  
Ms. Shashi Seth,  
Shri Khem Verma Jadon,  
Shri Yashwant Singh ,  
Ms. Archana Khare,

DD (EDP)  
AD (EDP)  
DPA Grade 'A'  
DPA Grade 'A'  
DPA Grade 'A'  
Sr. Supervisor  
Sr. Consultant  
Sr. Consultant  
Jr. Consultant

## HISTORY AND SCOPE OF THE DISTRICT CENSUS HANDBOOK

The need of data at the grass root level for the administrative and planning purposes at sub micro level as well as academic studies prompted the innovation of District Census Handbook. District Census Handbook is a unique publication from the Census organization which provides most authentic details of census and non-census information from village and town level to district level. The District Census Handbook was firstly introduced during the 1951 Census. It contains both census and non census data of urban as well as rural areas for each district. The census data contain several demographic and socio-economic characteristics of the lowest administrative unit i.e. of each village and town and ward of the district. The non census data comprise of data on availability of various civic amenities and infrastructural facilities etc. at the town and village level which constitute Village Directory and Town Directory part of the DCHB. The data of DCHB are of considerable importance in the context of planning and development at grass-root level.

In 1961 census DCHB provided a descriptive account of the district, administrative statistics, census tables and village and town directory including Primary Census Abstract. This pattern was changed in 1971 Census and the DCHB was published in three parts: Part-A related to village and town directory, Part-B to village and town PCA and Part-C comprised analytical report, administrative statistics, district census tables and certain analytical tables based on PCA and amenity data in respect of villages. The 1981 census DCHB was published in two parts: Part-A contained village and town directory and Part-B the PCA of village and town including the SCs and STs PCA up to tahsil/town levels. New features along with restructuring of the formats of village and town directory were added into it. In Village Directory, all amenities except electricity were brought together and if any amenity was not available in the referent village, the distance in broad ranges from the nearest place having such an amenity, was given.

The pattern of 1981 census was followed by and large for the DCHB of 1991 Census except the format of PCA. It was restructured. Nine-fold industrial classification of main workers was given against the four-fold industrial classification presented in the 1981 census. In addition, sex wise population in 0-6 age group was included in the PCA for the first time with a view to enable the data users to compile more realistic literacy rate as all children below 7 years of age had been treated as illiterate at the time of 1991 census. One of the important innovations in the 1991 census was the Community Development Block (CD Block) level presentation of village directory and PCA data instead of the traditional tahsil/taluk/PS level presentation.

As regards DCHB of 2001 Census, the scope of Village Directory was improved by including some other amenities like banking, recreational and cultural facilities, newspapers & magazines and 'most important commodity' manufactured in a village in addition to prescribed facilities of earlier censuses.

In Town Directory, the statement on Slums was modified and its coverage was enlarged by including details on all slums instead of 'notified slums'.

The scope and coverage of Village Directory of 2011 DCHB has been widened by including a number of new amenities in addition to those of 2001. In the Town Directory, seven Statements containing the details and the data of each town have been presented viz.; (i) Status and Growth History of towns, (ii) Physical Aspects and Location of Towns, (iii) Civic and other Amenities, (iv) Medical Facilities, (v) Educational, Recreational & Cultural Facilities, (vi) Industry & Banking, and (vii) Civic & other amenities in Slums respectively. CD Block wise data of Village Directory and Village PCA have been presented in DCHB of 2011 census as presented in earlier census. The data of DCHB 2011 Census have been presented in two parts, Part-A contains Village and Town Directory and Part-B contains Village and Town wise Primary Census Abstract. Both the Parts have been published in separate volumes in 2011 Census.

-----

## Brief History of the District

The name Kargil came into prominence sometimes between 14<sup>th</sup> and 16<sup>th</sup> century A.D. The area of present Kargil district including some parts of Baltistan, were called Purik in ancient history. The Purik Sultan, a renowned king set up his kingdom at Karpokhar in Suru valley. He brought the surrounding valley including Zanskar, Pushkum and Sodh, under his domain and developed the area in respect of culture, economy and military might. Gashoio Thatha Khan (a banished prince) also played a prominent role in expansion of his domain and developed the area Chiktan in 9<sup>th</sup> century A.D. Later he expanded his empire to Sodh area and is known to have been a powerful king of the area. Boti Khan, Abdul Khan, Amrood choo Tsering Malik Nathistan, Kunchhok Sherab Stan and Thi Sultan have also made an imprint on the history of Kargil.

In the ancient times Purik was divided into many small kingdoms. The prominent among these being Suru Karchey, Sodh, Fokar and Chiktan. The history of Ladakh and Baltistan written by many historians like A.H.Frankey, Wazir Hashmatulah Khan and Kacho Sikander reveal that Kargil was divided into many small kingdom which occasionally fought with each other on petty matters.

History also reveals that no kingdom made Kargil town as capital. Therefore there is no mention about Kargil in ancient history. There is conflicting view about the name of Kargil. In ancient history. Some says that the name is combination of two words, Khar and Ekil meaning "the kingdom in between". Others believe that it is derived from "Gar" means coming from any "place" and "Khil" means "Stop". The Kargil town is equidistant from Skardoo, Srinagar, Leh and Zanskar.

The Kargil were descendants of Mongol, Dard and Mon races. It is believed that Pushkum is the first village inhabited in the area. Purik remained under the cultural domains of Tibet and the people of the area adopted the Buddhist faith in the ancient time. During 14<sup>th</sup> century Islam came to Kargil.

Ali Sher Khan Anchan of Sakdoo a contemporary of Akbar, made good impact on the history of Purik, influencing the Purik culture with that of Balti. The Chiktan Place known Chiktan Razi Khaar, is famous in entire Puerik and Ladakh. It is said that the architect of this place was brought from Khapoloo in Baltistan and after the completion of the place the king tried to chop his hands off but failed to do so due to a clever trick by the architect's wife.

General Zorawar Singh Commander of the Dogra Army, invaded Ladakh in 1846 A.D. At that time Tsespal Namgyal was the King. General Zorawar Singh came to Suru Valley through Warwan pass where he encountered Ladakhi forces at Lankarchey, 35kms from Kargil towards Sankoo, under command of General Murup Namgyal. In a frience General Zorawar Singh defeated the Ladakhi force and marched ahead towards Leh. He crushed the reinforcement under the command of general Banka pa at

Mulbekh. To sustain his troops, General Zorawar Singh constructed a fort in proper Kargil near river. Kargil got prominence in the Dogra rule. The Dogras unified the kingdom of Baltistan, Purik, Zaskar and Ladakh and the entire region became a part of the State Jammu and Kashmir. The region was divided into three divisions of Skardoo, Kargil and Leh.

The district has been divided into four natural valleys -the Drass Valley, the Indus Valley and the Upper Sindh Valley of the Kanji Nallah Valley. The major tourist destination in the district are :- Zaskar (Penzila to Padum Karsha and Zangla), Sani, Rangdum, Monastery, Zongkhul Stongday, Phugthal Monastery, Padum, Zangla Mulbekh Chanba and Monetaryand Shargole Monastery etc.

Kargil has a temperate climate. Summer are cool with frigid nights, while winters are long and chilly with temperature often dropping to -51C(-54 F)



## Administration Set up

The region is mountainous with little or no vegetation. The mountains are of sedimentary rocks and are in process of disintegration due to weathering. The terrain being hilly, available land for agriculture is meager. The summer being short, only one crop of local Gram or wheat is grown.

Kargil district is bordered in the north by Gilgit and in its east by Leh (Ladakh). In the west and south-west it is contiguous with Bandipora, Ganderbal, Anantnag and Kishtwar districts. However, Himachal Pradesh borders it in Southern Direction.

The district is situated at a distance of 205 Kms from Srinagar, 60 kms from Drass, 234 kms from Leh to the east, 240kms from Padum to the Southeast and 1047 kms from Delhi to the South. The district is comprised of three tehsil Kargil, Sanku and Zaskar and the solitary urban unit Kargil MC.

For administrative purposes the deputy commissioner, the district and Sessions Judge, the Superintendent of Police and some other senior officers of the State look after the development and regulatory functions in the district.

### There are 9 CD blocks in Kargil district

S.NO	NAME OF CD BLOCK
1	Drass
2	Kargil
3	Shanker Chiktan
4	Shargole
5	Zaskar
6	Lungnak
7	Sankoo
8	Taifsuru
9	Undmagalpur Trespo

## District Highlights 2011 Census

Ladakh is one of the three districts of Jammu and Kashmir consisting two districts Leh and Kargil. Kargil district is separated from rest of the state by high mountains which are crossed through passes at various points.

Kargil district carved of erstwhile district Ladakh came into being in July, 1979. It lies in the North –East of Kashmir at an average elevation of 2676 meters (8780 feet's) and is situated along the bank of Suru River (Indus) at a distance of 205 Kms from Srinagar with a geographical area of 14036 Sq. Kms and the density is 10 persons per sq kilometer.

Tehsil	No of Villages 127		
	Inhabited	Uninhabited	Total
Kargil	64	2	66
Sanku	36	0	36
Zanskar	25	0	25

The district with 3 Tehsil of Kargil, Zanskar and Sankoo comprising of 127 villages Out of which 125 are inhabited and 2 uninhabited.

Population	Total	Persons	140802
		Males	77785
		Females	63017
	Urban	Persons	16338
		Males	10082
		Females	6256
	Rural	Persons	124464
		Males	67703
		Females	56761

The total population of the district as per census 2011 is 140802 persons. It consists of 77785 males and 63017 females. The rural sector of the district is inhabited by 124464 persons which consist of 67703 males and 56761 females. The urban sector consists of 16338 persons among which 10082 are males and 6256 females.

The population density as per 2011 census is 10 per square km. The literacy rate of the district is 71.3 out of which 83.2 are males and 56.3 are females. Tehsil wise it stands 86.46% in Kargil, 13.79% in Zanskar and 40.54% in Sankoo. Drass area of tehsil. Kargil in the district is the second coldest place in the world after Siberia in Russia. The Central Government have declared 7 committees of Kargil and Leh (Ladakh) district as Scheduled Tribes. These tribes are 1) Balti 2) Beda 3) Bor or Bota 4) Brokpa, Drokpa, Dard, Shin 5) Changpa 6) Garra 7) Mon and Purigpa. There are also 3 border blocks in the district viz: Drass, Kargil and Shakarchiktan the development of which is covered under Border Area Development Programme.

The district as a whole is peaceful. The State and Central assistance for the development of this area have done great help in changing the development scenario of the district.

## Important Statistics

		State		District		
Number of Villages	Total		6,553		127	
	Inhabited		6,337		125	
	Uninhabited		216		2	
Number of Towns	Statutory		86		1	
	Census		36		-	
	Total		122		1	
Number of Households	Normal		2,104,533		18,012	
	Institutional		12,121		321	
	Houseless		3,064		5	
Population	Total	Persons	12,541,302		140,802	
		Males	6,640,662		77,785	
		Females	5,900,640		63,017	
	Rural	Persons	9,108,060		124,464	
		Males	4,774,477		67,703	
		Females	4,333,583		56,761	
	Urban	Persons	3,433,242		16,338	
		Males	1,866,185		10,082	
		Females	1,567,057		6,256	
Percentage Urban Population			27.38		11.60	
Decadal Population Growth 2001-2011						
			Number	Percentage	Number	Percentage
		Persons	2,397,602	23.64	21,495	18.02
		Males	1,279,736	23.87	12,830	19.75
		Females	1,117,866	23.37	8,665	15.94
Area (in sq Km.)			*2222.36		14036.00	
Density of Population (Persons per sq Km.)			124		10	
Sex Ratio (Number of females per 1000 males)	Total		889		810	
	Rural		908		838	
	Urban		840		621	

<b>Important Statistics</b>					
		<b>State</b>		<b>District</b>	
		Number	Percentage	Number	Percentage
Literates	Persons	7,067,233	67.16	86,236	71.34
	Males	4,264,671	76.75	56,301	83.15
	Females	2,802,562	56.43	29,935	56.30
Scheduled Castes	Persons	924,991	7.38	18	0.01
	Males	486,232	7.32	12	0.02
	Females	438,759	7.44	6	0.01
Scheduled Tribes	Persons	1,493,299	11.91	122,336	86.89
	Males	776,257	11.69	62,652	80.55
	Females	717,042	12.15	59,684	94.71
<b>Workers and Non-Workers</b>					
Total Workers (Main and Marginal)	Persons	4,322,713	34.47	51,873	36.84
	Males	3,195,090	48.11	39,839	51.22
	Females	1,127,623	19.11	12,034	19.10
(i) Main Workers	Persons	2,644,149	21.08	28,941	20.55
	Males	2,305,788	34.72	25,174	32.36
	Females	338,361	5.73	3,767	5.98
(ii) Marginal Workers	Persons	1,678,564	13.38	22,932	16.29
	Males	889,302	13.39	14,665	18.85
	Females	789,262	13.38	8,267	13.12
Non-Workers	Persons	8,218,589	65.53	88,929	63.16
	Males	3,445,572	51.89	37,946	48.78
	Females	4,773,017	80.89	50,983	80.90
<b>Category of Workers (Main &amp; Marginal)</b>					
(i) Cultivators	Persons	1,245,316	28.81	8,266	15.94
	Males	765,527	23.96	4,266	10.71
	Females	479,789	42.55	4,000	33.24
(ii) Agricultural Labourers	Persons	547,705	12.67	3,763	7.25
	Males	414,344	12.97	1,845	4.63
	Females	133,361	11.83	1,918	15.94
(iii) Workers in household industry	Persons	172,586	3.99	1,222	2.36
	Males	91,338	2.86	481	1.21
	Females	81,248	7.21	741	6.16
(iv) Other Workers	Persons	2,357,106	54.53	38,622	74.45
	Males	1,923,881	60.21	33,247	83.45
	Females	433,225	38.42	5,375	44.67

Note :-\*

- a) The area includes 78,114 sq.Kms. under illegal occupation of Pakistan and 5,180 sq.Kms. illegally handed over by Pakistan to China and 37,555 sq.Kms. under illegal occupation of China in Leh (Ladakh) district.
- b) The population figures exclude population of areas under unlawful occupation of Pakistan and China where census could not be taken.
- c) Population density of State is calculated on the net area 101,387 sq. km excluding the area under illegal occupation by Pakistan and China.
- d) The density of the district is calculated on the geographical area.

## **Section - I**

# **Primary Census Abstract (PCA)**

## **Brief Note on Primary Census Abstract**

### **Introduction:**

The Indian Census has the reputation of being one of the best in the world. The first Census in India was conducted in the year 1872. This was conducted at different points of time in different parts of the country. In 1881 a Census was taken for the entire country simultaneously. Since then, Census has been conducted every ten years, without a break. Thus, the Census of India 2011 was the fifteenth in this unbroken series since 1872, the seventh after independence and the second census of the third millennium and twenty first century. The census has been uninterruptedly continued despite of several adversities like wars, epidemics, natural calamities, political unrest, etc.

The Census of India is conducted under the provisions of the Census Act 1948 and the Census Rules, 1990. In Censuses until 1931, a synchronous de-facto method was adopted wherein the Census was conducted throughout the country on a single night. This being a very costly affair and involved the deployment of very large force at one point of time was given up in 1941. Since then the same methodology has been followed in all the Censuses. It is a gigantic operation and considered to be the single largest, complex, peace time administrative exercise in the world.

The Census Operation in India is carried out in two distinct but inter connected phases - the House listing and Housing Census followed by the Population Enumeration. During the first phase of Census 2011 i.e., House listing and Housing Census, the buildings, census houses and households were identified and systematically listed in the House Listing and Housing Census Schedule during the period April to September, 2010 in different States/Union Territories. Apart from listing of houses, some useful data on the amenities available to the households was also collected for assessing condition of human settlements, housing deficits etc.

Censuses prior to Census 2001 had the system of collecting the information through Individual Slip which was a key schedule for every individual. The information collected through slip was then compiled for a household. Some information was also collected in addition to this for the household. During 2001 Census a comprehensive Household Schedule was adopted replacing the individual slip concept. In 2011 Census also similar household schedule was used for canvassing. The scope of demographic, socio-economic parameters has been widened in every census.

### **2. Population Enumeration - Census 2011:**

The field work of the second phase i.e. Population Enumeration was carried out during February-March, 2011. One of the essential features of Population Enumeration in the second phase was that each person was enumerated and her/his individual particulars were collected at a well-defined point of time.

The Census moment and the reference date for the Census of India 2011 was 00:00 hours of 1st March, 2011. The enumeration was conducted from 9th February to 28<sup>th</sup> February, 2011 along with a revisional round from 1<sup>st</sup> March,

2011 to 5<sup>th</sup> March, 2011 synchronously all over the country except for few specific areas of the Jammu & Kashmir, Himachal Pradesh and Uttarakhand states that remain snowbound in February. In these locations the population enumeration was done from 11<sup>th</sup> September, 2010 to 30<sup>th</sup> September, 2010 along with a revisional round from 1<sup>st</sup> October, 2010 to 5<sup>th</sup> October, 2010. The reference date for the census in snow bound non-synchronous areas of these states was 00.00 hours of the first day of October, 2010. In addition to the coverage during House listing & Housing Census, the enumeration of the Houseless population was carried out on the night of 28<sup>th</sup> February, 2011, as has been the usual practice. For the purpose of Census, certain areas where the access of the civilian enumerators was not permissible due to security reasons termed as 'Special Charges' such as the Defence and strictly Military/Para-Military areas, including operational areas were also covered. Such areas were not covered during the House listing & Housing Census. In addition to the defence/para-military areas, Special Charges also included certain factory areas, certain colonies, sensitive areas, scientific establishments, etc. These also formed Special Charges as these were not accessible by the usual census enumerator.

### **3. Quality Assurance:**

A Task Force for Quality Assurance (TFQA) functioned under the chairmanship of the RG & CCI. Experienced officers of the different divisions of the organization i.e. Heads and senior officers of the Census Division, Data Processing Division, Map Division, Demography Division and Social Studies Division comprised the TFQA. The Directors of Census Operations were co-opted as members whenever the TFQA discussed the data for their States/Union territories. The main objective of constituting the TFQA was to subject the data to stringent validation checks and ensure its quality before release as it was expedient to be satisfied itself about the quality of data before putting the same in public domain.

The Directors and their senior officers were involved at all levels with respect to the quality and the coverage of their states/Uts. The TFQA intensively scrutinized coverage and content parameters including edit and imputation logic. The most important aspect of the data quality was to ensure complete coverage of all geographical areas especially for the population enumeration phase where the data is disseminated right up to the village level in the rural areas and the ward level in the urban areas. Thus ensuring the complete coverage and correct geographical linkage of each enumeration block was one of the major planks of the quality control, especially for small area population statistics. The content was scrutinized mainly through the process of internal consistency, comparison with similar data in the past and also through validation with likewise data if available, from external sources. Quite often the local knowledge and perception was looked at to understand both the existing and the new emerging trends of population distribution and characteristics. A very comprehensive check and edit mechanism was put in place to objectively examine the preliminary Census 2011 Population Enumeration results and finally clear them for use. The population data was cleared only after the full possible satisfaction of the TFQA.



The entire work relating to the data validation and scrutiny was completed by all the States/Union territories under the overall supervision and monitoring of the Census Division of the Office of the Registrar General, India with active cooperation and support of the Social Studies Division, Data Processing Division, Data Dissemination Division and Map Division.

#### **4. Primary Census Abstract:**

The Primary Census Abstract which is important publication of 2011 Census gives basic information on Area, Total Number of Households, Total Population, Scheduled Castes, Scheduled Tribes Population, Population in the age group 0-6, Literates, Main Workers and Marginal Workers classified by the four broad industrial categories, namely, (i) Cultivators, (ii) Agricultural Labourers, (iii) Household Industry Workers, and (iv) Other Workers and also Non-Workers. The characteristics of the Total Population include Scheduled Castes, Scheduled Tribes, Institutional and Houseless Population and are presented by sex and rural-urban residence.

In 1981 census main workers were presented into four categories. As regards 1991 Census, the nine-fold industrial classification of main workers has been given in the Primary Census Abstract. One of the important features of the Primary Census Abstract of 1991 Census was the presentation of population of the age group 0-6 which is continued in 2001 and 2011 Census. All the children of age 6 years or less have been treated as illiterate even if the child is going to a school and may have picked up reading and writing. This will help the data users in better analysis and understanding of the literacy data as the literacy rate is calculated with 7 years and above population and it is referred as effective literacy rate. In 2001 and 2011 census four categories of main workers have been given in the Primary Census Abstract.

#### **5. Level of Presentation of PCA data in District Census Handbooks:**

The format of Primary Census Abstract (PCA) adopted in the DCHB of 2001 Census has been continued for 2011 Census as the data on four categories of works have been presented similar to 2001 census. The Primary Census Abstract data in different PCAs are presented at different levels. The level of presentation of Primary Census Abstracts in DCHB is as under:

1. District Primary Census Abstract -District/C.D. Block/Town.
2. Primary Census Abstract for Scheduled Castes- District/C.D. Block/Town.
3. Primary Census Abstract for Scheduled Tribes -District/C.D. Block/Town.
4. Village Primary Census Abstract -C.D. Block/Village wise.
5. Urban Primary Census Abstract- Town/Ward level.

-4-

The PCA Data for villages was presented C.D. Block wise for the first time in 1991 Census. This practice is continued in 2001 and 2011 Census. The term 'Total Population' includes the Scheduled Castes, the Scheduled Tribes, the Institutional and the Houseless populations. An appendix to District

Primary Census Abstract has also been furnished showing urban enumeration block-wise particulars on Total Population, the Scheduled Castes Population and the Scheduled Tribes Population for each town.

## **6. Area Figures:**

The area figures supplied by local revenue authorities of the district in respect of tahsils, Police Stations and by the local bodies in respect of towns are given in square kilometers. The area figures of the villages supplied by the Tahsildars in acres have been converted and shown in hectares. The area figures of the C.D. Block are the total of the village areas coming under each C.D. Block. The area figures for the district are the same as adopted by the Surveyor General of India to maintain uniformity at the national level.

-----



# **District Primary Census Abstract**

## DISTRICT PRIMARY

Location code number	District/ CD Block/ Town	Total/ Rural/ Urban	Area in Square Kilometre	Number of households	Total population (including institutional and houseless population)			Population in the age-group 0-6		
					Persons	Males	Females	Persons	Males	Females
1	2	3	4	5	6	7	8	9	10	11
<b>004</b>	<b>Kargil - District</b>	<b>Total</b>	<b>14,036.00</b>	<b>18,338</b>	<b>140,802</b>	<b>77,785</b>	<b>63,017</b>	<b>19,928</b>	<b>10,078</b>	<b>9,850</b>
		<b>Rural</b>	<b>14,033.86</b>	<b>16,147</b>	<b>124,464</b>	<b>67,703</b>	<b>56,761</b>	<b>18,359</b>	<b>9,290</b>	<b>9,069</b>
		<b>Urban</b>	<b>2.14</b>	<b>2,191</b>	<b>16,338</b>	<b>10,082</b>	<b>6,256</b>	<b>1,569</b>	<b>788</b>	<b>781</b>
0029	Drass	Total	22.75	2,149	21,988	14,731	7,257	2,767	1,417	1,350
		Rural	22.75	2,149	21,988	14,731	7,257	2,767	1,417	1,350
		Urban	0.00	-	-	-	-	-	-	-
0030	Kargil	Total	28.41	3,293	25,174	12,723	12,451	4,194	2,094	2,100
		Rural	28.41	3,293	25,174	12,723	12,451	4,194	2,094	2,100
		Urban	0.00	-	-	-	-	-	-	-
0031	Shakar Chiktan	Total	14.59	1,609	11,233	5,871	5,362	1,610	794	816
		Rural	14.59	1,609	11,233	5,871	5,362	1,610	794	816
		Urban	0.00	-	-	-	-	-	-	-
0032	Shargole	Total	17.28	1,625	11,728	6,024	5,704	1,537	802	735
		Rural	17.28	1,625	11,728	6,024	5,704	1,537	802	735
		Urban	0.00	-	-	-	-	-	-	-
0033	Zanskar	Total	35.14	1,991	11,653	5,858	5,795	1,641	846	795
		Rural	35.14	1,991	11,653	5,858	5,795	1,641	846	795
		Urban	0.00	-	-	-	-	-	-	-
0034	Lungnak	Total	7.97	336	2,140	1,150	990	267	134	133
		Rural	7.97	336	2,140	1,150	990	267	134	133
		Urban	0.00	-	-	-	-	-	-	-
0035	Sankoo	Total	28.86	2,340	17,735	9,063	8,672	2,685	1,366	1,319
		Rural	28.86	2,340	17,735	9,063	8,672	2,685	1,366	1,319
		Urban	0.00	-	-	-	-	-	-	-
0036	Taifsuru	Total	20.56	1,322	10,059	5,170	4,889	1,723	862	861
		Rural	20.56	1,322	10,059	5,170	4,889	1,723	862	861
		Urban	0.00	-	-	-	-	-	-	-
0037	Gundmagalpur Trespore	Total	11.07	1,482	12,754	7,113	5,641	1,935	975	960
		Rural	11.07	1,482	12,754	7,113	5,641	1,935	975	960
		Urban	0.00	-	-	-	-	-	-	-
<b>URBAN</b>										
800048	Kargil (MC)	Urban	2.14	2,191	16,338	10,082	6,256	1,569	788	781

## PRIMARY CENSUS ABSTRACT

## CENSUS ABSTRACT

Scheduled Castes population			Scheduled Tribes population			Literates			Total/ Rural/	District/ CD Block/ Town
Persons	Males	Females	Persons	Males	Females	Persons	Males	Females	Urban	
12	13	14	15	16	17	18	19	20	3	2
18	12	6	122,336	62,652	59,684	86,236	56,301	29,935	Total	Kargil - District
10	5	5	110,840	56,693	54,147	73,896	47,674	26,222	Rural	
8	7	1	11,496	5,959	5,537	12,340	8,627	3,713	Urban	
7	3	4	14,323	7,346	6,977	16,333	12,460	3,873	Total	Drass
7	3	4	14,323	7,346	6,977	16,333	12,460	3,873	Rural	
-	-	-	-	-	-	-	-	-	Urban	
-	-	-	24,215	12,244	11,971	14,284	8,545	5,739	Total	Kargil
-	-	-	24,215	12,244	11,971	14,284	8,545	5,739	Rural	
-	-	-	-	-	-	-	-	-	Urban	
1	1	-	10,931	5,716	5,215	6,812	4,132	2,680	Total	Shakar Chiktan
1	1	-	10,931	5,716	5,215	6,812	4,132	2,680	Rural	
-	-	-	-	-	-	-	-	-	Urban	
2	1	1	11,219	5,789	5,430	7,482	4,373	3,109	Total	Shargole
2	1	1	11,219	5,789	5,430	7,482	4,373	3,109	Rural	
-	-	-	-	-	-	-	-	-	Urban	
-	-	-	11,557	5,804	5,753	6,013	3,706	2,307	Total	Zanskar
-	-	-	11,557	5,804	5,753	6,013	3,706	2,307	Rural	
-	-	-	-	-	-	-	-	-	Urban	
-	-	-	2,120	1,137	983	1,086	739	347	Total	Lungnak
-	-	-	2,120	1,137	983	1,086	739	347	Rural	
-	-	-	-	-	-	-	-	-	Urban	
-	-	-	17,110	8,729	8,381	9,522	5,712	3,810	Total	Sankoo
-	-	-	17,110	8,729	8,381	9,522	5,712	3,810	Rural	
-	-	-	-	-	-	-	-	-	Urban	
-	-	-	8,209	4,196	4,013	5,166	3,138	2,028	Total	Taifsuru
-	-	-	8,209	4,196	4,013	5,166	3,138	2,028	Rural	
-	-	-	-	-	-	-	-	-	Urban	
-	-	-	11,156	5,732	5,424	7,198	4,869	2,329	Total	Gundmagalpur Trespore
-	-	-	11,156	5,732	5,424	7,198	4,869	2,329	Rural	
-	-	-	-	-	-	-	-	-	Urban	
8	7	1	11,496	5,959	5,537	12,340	8,627	3,713	Urban	<b>URBAN</b> Kargil (MC)

## DISTRICT PRIMARY

Location code number	District/ CD Block/ Town	Total/ Rural/ Urban	Industrial category								
			Total workers			Main workers			Cultivators		
			Persons	Males	Females	Persons	Males	Females	Persons	Males	Females
1	2	3	21	22	23	24	25	26	27	28	29
004	Kargil - District	Total	51,873	39,839	12,034	28,941	25,174	3,767	1,834	1,102	732
		Rural	44,460	33,704	10,756	22,839	19,809	3,030	1,772	1,060	712
		Urban	7,413	6,135	1,278	6,102	5,365	737	62	42	20
0029	Drass	Total	10,541	9,843	698	8,608	8,236	372	109	93	16
		Rural	10,541	9,843	698	8,608	8,236	372	109	93	16
		Urban	-	-	-	-	-	-	-	-	-
0030	Kargil	Total	6,715	5,291	1,424	3,378	2,978	400	417	338	79
		Rural	6,715	5,291	1,424	3,378	2,978	400	417	338	79
		Urban	-	-	-	-	-	-	-	-	-
0031	Shakar Chiktan	Total	3,791	2,519	1,272	1,830	1,576	254	105	93	12
		Rural	3,791	2,519	1,272	1,830	1,576	254	105	93	12
		Urban	-	-	-	-	-	-	-	-	-
0032	Shargole	Total	4,702	2,890	1,812	1,889	1,434	455	118	69	49
		Rural	4,702	2,890	1,812	1,889	1,434	455	118	69	49
		Urban	-	-	-	-	-	-	-	-	-
0033	Zanskar	Total	5,240	2,890	2,350	2,113	1,436	677	482	201	281
		Rural	5,240	2,890	2,350	2,113	1,436	677	482	201	281
		Urban	-	-	-	-	-	-	-	-	-
0034	Lungnak	Total	1,136	593	543	446	221	225	340	137	203
		Rural	1,136	593	543	446	221	225	340	137	203
		Urban	-	-	-	-	-	-	-	-	-
0035	Sankoo	Total	5,216	3,925	1,291	1,666	1,339	327	158	100	58
		Rural	5,216	3,925	1,291	1,666	1,339	327	158	100	58
		Urban	-	-	-	-	-	-	-	-	-
0036	Taifsuru	Total	3,126	2,159	967	896	729	167	16	9	7
		Rural	3,126	2,159	967	896	729	167	16	9	7
		Urban	-	-	-	-	-	-	-	-	-
0037	Gundmagalpur Trespore	Total	3,993	3,594	399	2,013	1,860	153	27	20	7
		Rural	3,993	3,594	399	2,013	1,860	153	27	20	7
		Urban	-	-	-	-	-	-	-	-	-
<b>URBAN</b>											
800048	Kargil (MC)	Urban	7,413	6,135	1,278	6,102	5,365	737	62	42	20

PRIMARY CENSUS ABSTRACT

CENSUS ABSTRACT

of main workers										Total/ Rural/ Urban	District/ CD Block/ Town
Agricultural labourers			Household industry workers			Other workers					
Persons	Males	Females	Persons	Males	Females	Persons	Males	Females			
30	31	32	33	34	35	36	37	38	3	2	
524	279	245	272	207	65	26,311	23,586	2,725	Total	Kargil - District	
504	263	241	262	199	63	20,301	18,287	2,014	Rural		
20	16	4	10	8	2	6,010	5,299	711	Urban		
16	13	3	60	45	15	8,423	8,085	338	Total	Drass	
16	13	3	60	45	15	8,423	8,085	338	Rural		
-	-	-	-	-	-	-	-	-	Urban		
40	33	7	35	16	19	2,886	2,591	295	Total	Kargil	
40	33	7	35	16	19	2,886	2,591	295	Rural		
-	-	-	-	-	-	-	-	-	Urban		
57	44	13	8	8	-	1,660	1,431	229	Total	Shakar Chiktan	
57	44	13	8	8	-	1,660	1,431	229	Rural		
-	-	-	-	-	-	-	-	-	Urban		
75	66	9	16	9	7	1,680	1,290	390	Total	Shargole	
75	66	9	16	9	7	1,680	1,290	390	Rural		
-	-	-	-	-	-	-	-	-	Urban		
275	76	199	50	42	8	1,306	1,117	189	Total	Zanskar	
275	76	199	50	42	8	1,306	1,117	189	Rural		
-	-	-	-	-	-	-	-	-	Urban		
-	-	-	4	2	2	102	82	20	Total	Lungnak	
-	-	-	4	2	2	102	82	20	Rural		
-	-	-	-	-	-	-	-	-	Urban		
26	21	5	67	59	8	1,415	1,159	256	Total	Sankoo	
26	21	5	67	59	8	1,415	1,159	256	Rural		
-	-	-	-	-	-	-	-	-	Urban		
9	6	3	9	8	1	862	706	156	Total	Taifsuru	
9	6	3	9	8	1	862	706	156	Rural		
-	-	-	-	-	-	-	-	-	Urban		
6	4	2	13	10	3	1,967	1,826	141	Total	Gundmagalpur Trespore	
6	4	2	13	10	3	1,967	1,826	141	Rural		
-	-	-	-	-	-	-	-	-	Urban		
20	16	4	10	8	2	6,010	5,299	711	Urban	<b>URBAN</b> Kargil (MC)	



## DISTRICT PRIMARY

Location code number	District/ CD Block/ Town	Total/ Rural/ Urban	Industrial category								
			Marginal workers			Cultivators			Agricultural labourers		
			Persons	Males	Females	Persons	Males	Females	Persons	Males	Females
1	2	3	39	40	41	42	43	44	45	46	47
004	Kargil - District	Total	22,932	14,665	8,267	6,432	3,164	3,268	3,239	1,566	1,673
		Rural	21,621	13,895	7,726	6,067	3,091	2,976	3,211	1,548	1,663
		Urban	1,311	770	541	365	73	292	28	18	10
0029	Drass	Total	1,933	1,607	326	141	67	74	49	44	5
		Rural	1,933	1,607	326	141	67	74	49	44	5
		Urban	-	-	-	-	-	-	-	-	-
0030	Kargil	Total	3,337	2,313	1,024	1,157	587	570	202	154	48
		Rural	3,337	2,313	1,024	1,157	587	570	202	154	48
		Urban	-	-	-	-	-	-	-	-	-
0031	Shakar Chiktan	Total	1,961	943	1,018	952	455	497	368	130	238
		Rural	1,961	943	1,018	952	455	497	368	130	238
		Urban	-	-	-	-	-	-	-	-	-
0032	Shargole	Total	2,813	1,456	1,357	844	230	614	274	105	169
		Rural	2,813	1,456	1,357	844	230	614	274	105	169
		Urban	-	-	-	-	-	-	-	-	-
0033	Zanskar	Total	3,127	1,454	1,673	1,266	608	658	1,418	583	835
		Rural	3,127	1,454	1,673	1,266	608	658	1,418	583	835
		Urban	-	-	-	-	-	-	-	-	-
0034	Lungnak	Total	690	372	318	396	201	195	170	60	110
		Rural	690	372	318	396	201	195	170	60	110
		Urban	-	-	-	-	-	-	-	-	-
0035	Sankoo	Total	3,550	2,586	964	479	307	172	194	169	25
		Rural	3,550	2,586	964	479	307	172	194	169	25
		Urban	-	-	-	-	-	-	-	-	-
0036	Taifsuru	Total	2,230	1,430	800	406	290	116	328	143	185
		Rural	2,230	1,430	800	406	290	116	328	143	185
		Urban	-	-	-	-	-	-	-	-	-
0037	Gundmagalpur Trespore	Total	1,980	1,734	246	426	346	80	208	160	48
		Rural	1,980	1,734	246	426	346	80	208	160	48
		Urban	-	-	-	-	-	-	-	-	-
<b>URBAN</b>											
800048	Kargil (MC)	Urban	1,311	770	541	365	73	292	28	18	10

## PRIMARY CENSUS ABSTRACT

## CENSUS ABSTRACT

of marginal workers												Total/ Rural/ Urban	District/ Town	CD Block/ Town	Locatio n code number
Household industry workers			Other workers			Non-workers									
Persons	Males	Females	Persons	Males	Females	Persons	Males	Females							
48	49	50	51	52	53	54	55	56	3	2	1				
950	274	676	12,311	9,661	2,650	88,929	37,946	50,983	Total	Kargil - District	004				
857	255	602	11,486	9,001	2,485	80,004	33,999	46,005	Rural						
93	19	74	825	660	165	8,925	3,947	4,978	Urban						
144	53	91	1,599	1,443	156	11,447	4,888	6,559	Total	Drass	0029				
144	53	91	1,599	1,443	156	11,447	4,888	6,559	Rural						
-	-	-	-	-	-	-	-	-	Urban						
169	49	120	1,809	1,523	286	18,459	7,432	11,027	Total	Kargil	0030				
169	49	120	1,809	1,523	286	18,459	7,432	11,027	Rural						
-	-	-	-	-	-	-	-	-	Urban						
185	15	170	456	343	113	7,442	3,352	4,090	Total	Shakar Chiktan	0031				
185	15	170	456	343	113	7,442	3,352	4,090	Rural						
-	-	-	-	-	-	-	-	-	Urban						
67	24	43	1,628	1,097	531	7,026	3,134	3,892	Total	Shargole	0032				
67	24	43	1,628	1,097	531	7,026	3,134	3,892	Rural						
-	-	-	-	-	-	-	-	-	Urban						
47	18	29	396	245	151	6,413	2,968	3,445	Total	Zanskar	0033				
47	18	29	396	245	151	6,413	2,968	3,445	Rural						
-	-	-	-	-	-	-	-	-	Urban						
4	4	-	120	107	13	1,004	557	447	Total	Lungnak	0034				
4	4	-	120	107	13	1,004	557	447	Rural						
-	-	-	-	-	-	-	-	-	Urban						
104	57	47	2,773	2,053	720	12,519	5,138	7,381	Total	Sankoo	0035				
104	57	47	2,773	2,053	720	12,519	5,138	7,381	Rural						
-	-	-	-	-	-	-	-	-	Urban						
80	13	67	1,416	984	432	6,933	3,011	3,922	Total	Taifsuru	0036				
80	13	67	1,416	984	432	6,933	3,011	3,922	Rural						
-	-	-	-	-	-	-	-	-	Urban						
57	22	35	1,289	1,206	83	8,761	3,519	5,242	Total	Gundmagalpur Trespore	0037				
57	22	35	1,289	1,206	83	8,761	3,519	5,242	Rural						
-	-	-	-	-	-	-	-	-	Urban						
<b>URBAN</b>															
93	19	74	825	660	165	8,925	3,947	4,978	Urban	Kargil (MC)	800048				



**Appendix to District Primary  
Census Abstract Total,  
Scheduled Castes and  
Scheduled Tribes  
Population - Urban Block wise**

**APPENDIX TO DISTRICT PRIMARY CENSUS ABSTRACT**  
TOTAL, SCHEDULED CASTES AND SCHEDULED TRIBES POPULATION - URBAN BLOCK WISE

Location Code	Name of Town	Name of Ward	Boundaries of Urban Block / EB Number	Total Population	Scheduled Castes Population	Scheduled Tribes Population
1	2	3	4	5	6	7
800048	Kargil (MC)	WARD No.-0001	EB No.-000100	300	-	-
800048	Kargil (MC)	WARD No.-0001	EB No.-000200	327	-	308
800048	Kargil (MC)	WARD No.-0001	EB No.-000300	103	-	99
800048	Kargil (MC)	WARD No.-0001	EB No.-000400	287	-	7
800048	Kargil (MC)	WARD No.-0002	EB No.-000500	247	-	190
800048	Kargil (MC)	WARD No.-0002	EB No.-000600	236	-	221
800048	Kargil (MC)	WARD No.-0002	EB No.-000700	268	-	-
800048	Kargil (MC)	WARD No.-0002	EB No.-000800	231	-	230
800048	Kargil (MC)	WARD No.-0002	EB No.-310100	17	4	1
800048	Kargil (MC)	WARD No.-0003	EB No.-000900	185	-	185
800048	Kargil (MC)	WARD No.-0004	EB No.-001000	265	-	256
800048	Kargil (MC)	WARD No.-0005	EB No.-001100	510	-	507
800048	Kargil (MC)	WARD No.-0006	EB No.-001200	273	-	269
800048	Kargil (MC)	WARD No.-0007	EB No.-001300	420	-	411
800048	Kargil (MC)	WARD No.-0008	EB No.-001400	564	-	555
800048	Kargil (MC)	WARD No.-0009	EB No.-001500	462	4	384
800048	Kargil (MC)	WARD No.-0009	EB No.-001600	392	-	383
800048	Kargil (MC)	WARD No.-0010	EB No.-001700	354	-	346
800048	Kargil (MC)	WARD No.-0011	EB No.-001800	396	-	385
800048	Kargil (MC)	WARD No.-0012	EB No.-001900	328	-	328
800048	Kargil (MC)	WARD No.-0013	EB No.-002000	377	-	377
800048	Kargil (MC)	WARD No.-0014	EB No.-002100	271	-	265
800048	Kargil (MC)	WARD No.-0014	EB No.-002200	819	-	811
800048	Kargil (MC)	WARD No.-0014	EB No.-002300	497	-	493
800048	Kargil (MC)	WARD No.-0014	EB No.-380500	570	-	-
800048	Kargil (MC)	WARD No.-0014	EB No.-380900	10	-	-
800048	Kargil (MC)	WARD No.-0014	EB No.-381300	37	-	-
800048	Kargil (MC)	WARD No.-0014	EB No.-420800	248	-	-
800048	Kargil (MC)	WARD No.-0015	EB No.-002400	489	-	479
800048	Kargil (MC)	WARD No.-0016	EB No.-002500	599	-	573
800048	Kargil (MC)	WARD No.-0016	EB No.-002600	609	-	607
800048	Kargil (MC)	WARD No.-0016	EB No.-002700	326	-	316
800048	Kargil (MC)	WARD No.-0016	EB No.-002800	314	-	293
800048	Kargil (MC)	WARD No.-0016	EB No.-002900	336	-	297
800048	Kargil (MC)	WARD No.-0016	EB No.-003000	518	-	492
800048	Kargil (MC)	WARD No.-0016	EB No.-003100	716	-	707
800048	Kargil (MC)	WARD No.-0016	EB No.-003200	725	-	721
800048	Kargil (MC)	WARD No.-0016	EB No.-380100	237	-	-
800048	Kargil (MC)	WARD No.-0016	EB No.-380200	864	-	-
800048	Kargil (MC)	WARD No.-0016	EB No.-380700	99	-	-
800048	Kargil (MC)	WARD No.-0016	EB No.-380800	61	-	-
800048	Kargil (MC)	WARD No.-0016	EB No.-381000	109	-	-
800048	Kargil (MC)	WARD No.-0016	EB No.-381100	32	-	-
800048	Kargil (MC)	WARD No.-0016	EB No.-381200	21	-	-

**APPENDIX TO DISTRICT PRIMARY CENSUS ABSTRACT**  
**TOTAL, SCHEDULED CASTES AND SCHEDULED TRIBES POPULATION - URBAN BLOCK WISE**

Location Code	Name of Town	Name of Ward	Boundaries of Urban Block / EB Number	Total Population	Scheduled Castes Population	Scheduled Tribes Population
1	2	3	4	5	6	7
800048	Kargil (MC)	WARD No.-0016	EB No.-410200	760	-	-
800048	Kargil (MC)	WARD No.-0016	EB No.-420100	56	-	-
800048	Kargil (MC)	WARD No.-0016	EB No.-420200	473	-	-



# **Primary Census Abstract for Scheduled Castes (SC)**



## PRIMARY CENSUS ABSTRACT

Location code number	District/ CD Block/ Town	Total/ Rural/ Urban	Number of households with SC as head	Total population (including institutional and houseless population)			Population in the age-group 0-6		
				Persons	Males	Females	Persons	Males	Females
				5	6	7	8	9	10
<b>004</b>	<b>Kargil - District</b>	<b>Total</b>	<b>4</b>	<b>18</b>	<b>12</b>	<b>6</b>	<b>3</b>	<b>1</b>	<b>2</b>
		<b>Rural</b>	<b>2</b>	<b>10</b>	<b>5</b>	<b>5</b>	<b>3</b>	<b>1</b>	<b>2</b>
		<b>Urban</b>	<b>2</b>	<b>8</b>	<b>7</b>	<b>1</b>	<b>-</b>	<b>-</b>	<b>-</b>
0029	Drass	Total	2	7	3	4	3	1	2
		Rural	2	7	3	4	3	1	2
		Urban	-	-	-	-	-	-	-
0031	Shakar Chiktan	Total	-	1	1	-	-	-	-
		Rural	-	1	1	-	-	-	-
		Urban	-	-	-	-	-	-	-
0032	Shargole	Total	-	2	1	1	-	-	-
		Rural	-	2	1	1	-	-	-
		Urban	-	-	-	-	-	-	-
		<b>URBAN</b>							
800048	Kargil (MC)	Urban	2	8	7	1	-	-	-

PRIMARY CENSUS ABSTRACT

FOR SCHEDULED CASTES

Literates			Illiterates			Total workers			Total/ Rural/	District/ CD Block/ Town
Persons	Males	Females	Persons	Males	Females	Persons	Males	Females	Urban	
11	12	13	14	15	16	17	18	19	3	2
11	9	2	7	3	4	11	8	3	Total	Kargil - District
4	3	1	6	2	4	6	3	3	Rural	
7	6	1	1	1	-	5	5	-	Urban	
3	2	1	4	1	3	4	2	2	Total	Drass
3	2	1	4	1	3	4	2	2	Rural	
-	-	-	-	-	-	-	-	-	Urban	
1	1	-	-	-	-	-	-	-	Total	Shakar Chiktan
1	1	-	-	-	-	-	-	-	Rural	
-	-	-	-	-	-	-	-	-	Urban	
-	-	-	2	1	1	2	1	1	Total	Shargole
-	-	-	2	1	1	2	1	1	Rural	
-	-	-	-	-	-	-	-	-	Urban	
										<b>URBAN</b>
7	6	1	1	1	-	5	5	-	Urban	Kargil (MC)

## PRIMARY CENSUS ABSTRACT

Location code number	District/ CD Block/ Town	Total/ Rural/ Urban	Industrial category									
			Main workers			Cultivators			Agricultural labourers			
			Persons	Males	Females	Persons	Males	Females	Persons	Males	Females	
1	2	3	20	21	22	23	24	25	26	27	28	
<b>004</b>	<b>Kargil - District</b>	<b>Total</b>	<b>5</b>	<b>5</b>	-	-	-	-	-	-	-	-
		<b>Rural</b>	-	-	-	-	-	-	-	-	-	-
		<b>Urban</b>	<b>5</b>	<b>5</b>	-	-	-	-	-	-	-	-
0029	Drass	Total	-	-	-	-	-	-	-	-	-	-
		Rural	-	-	-	-	-	-	-	-	-	-
		Urban	-	-	-	-	-	-	-	-	-	-
0031	Shakar Chiktan	Total	-	-	-	-	-	-	-	-	-	-
		Rural	-	-	-	-	-	-	-	-	-	-
		Urban	-	-	-	-	-	-	-	-	-	-
0032	Shargole	Total	-	-	-	-	-	-	-	-	-	-
		Rural	-	-	-	-	-	-	-	-	-	-
		Urban	-	-	-	-	-	-	-	-	-	-
<b>URBAN</b>												
800048	Kargil (MC)	Urban	5	5	-	-	-	-	-	-	-	-

PRIMARY CENSUS ABSTRACT

**FOR SCHEDULED CASTES**

of main workers

Household industry workers			Other workers			Marginal workers			Total/ Rural/	District/ CD Block/ Town
Persons	Males	Females	Persons	Males	Females	Persons	Males	Females	Urban	
29	30	31	32	33	34	35	36	37	3	2
-	-	-	5	5	-	6	3	3	<b>Total</b>	<b>Kargil - District</b>
-	-	-	-	-	-	6	3	3	<b>Rural</b>	
-	-	-	5	5	-	-	-	-	<b>Urban</b>	
-	-	-	-	-	-	4	2	2	Total	Drass
-	-	-	-	-	-	4	2	2	Rural	
-	-	-	-	-	-	-	-	-	Urban	
-	-	-	-	-	-	-	-	-	Total	Shakar Chiktan
-	-	-	-	-	-	-	-	-	Rural	
-	-	-	-	-	-	-	-	-	Urban	
-	-	-	-	-	-	2	1	1	Total	Shargole
-	-	-	-	-	-	2	1	1	Rural	
-	-	-	-	-	-	-	-	-	Urban	
<b>URBAN</b>										
-	-	-	5	5	-	-	-	-	Urban	Kargil (MC)

## PRIMARY CENSUS ABSTRACT

Location code number	District/ CD Block/ Town	Total/ Rural/ Urban	Industrial category of								
			Cultivators			Agricultural labourers			Household industry workers		
			Persons	Males	Females	Persons	Males	Females	Persons	Males	Females
1	2	3	38	39	40	41	42	43	44	45	46
<b>004</b>	<b>Kargil - District</b>	<b>Total</b>	<b>2</b>	<b>1</b>	<b>1</b>	-	-	-	-	-	-
		<b>Rural</b>	<b>2</b>	<b>1</b>	<b>1</b>	-	-	-	-	-	-
		<b>Urban</b>	-	-	-	-	-	-	-	-	-
0029	Drass	Total	-	-	-	-	-	-	-	-	-
		Rural	-	-	-	-	-	-	-	-	-
		Urban	-	-	-	-	-	-	-	-	-
0031	Shakar Chiktan	Total	-	-	-	-	-	-	-	-	-
		Rural	-	-	-	-	-	-	-	-	-
		Urban	-	-	-	-	-	-	-	-	-
0032	Shargole	Total	2	1	1	-	-	-	-	-	-
		Rural	2	1	1	-	-	-	-	-	-
		Urban	-	-	-	-	-	-	-	-	-
<b>URBAN</b>											
800048	Kargil (MC)	Urban	-	-	-	-	-	-	-	-	-

PRIMARY CENSUS ABSTRACT

**FOR SCHEDULED CASTES**

marginal workers						Total/ Rural/ Urban	District/ Town	CD Block/ Town	Location code number
Other workers			Non-workers						
Persons	Males	Females	Persons	Males	Females				
47	48	49	50	51	52	3	2	1	
4	2	2	7	4	3	<b>Total</b>	<b>Kargil - District</b>	<b>004</b>	
4	2	2	4	2	2	<b>Rural</b>			
-	-	-	3	2	1	<b>Urban</b>			
4	2	2	3	1	2	Total	Drass	0029	
4	2	2	3	1	2	Rural			
-	-	-	-	-	-	Urban			
-	-	-	1	1	-	Total	Shakar Chiktan	0031	
-	-	-	1	1	-	Rural			
-	-	-	-	-	-	Urban			
-	-	-	-	-	-	Total	Shargole	0032	
-	-	-	-	-	-	Rural			
-	-	-	-	-	-	Urban			
						<b>URBAN</b>			
-	-	-	3	2	1	Urban	Kargil (MC)	800048	



# **Primary Census Abstract for Scheduled Tribes (ST)**



## PRIMARY CENSUS ABSTRACT

Location code number	District/ CD Block/ Town	Total/ Rural/ Urban	Number of households with ST as head	Total population (including institutional and houseless population)			Population in the age-group 0-6		
				Persons	Males	Females	Persons	Males	Females
				5	6	7	8	9	10
<b>004</b>	<b>Kargil - District</b>	<b>Total</b>	<b>16,989</b>	<b>122,336</b>	<b>62,652</b>	<b>59,684</b>	<b>18,840</b>	<b>9,529</b>	<b>9,311</b>
		<b>Rural</b>	<b>15,200</b>	<b>110,840</b>	<b>56,693</b>	<b>54,147</b>	<b>17,425</b>	<b>8,817</b>	<b>8,608</b>
		<b>Urban</b>	<b>1,789</b>	<b>11,496</b>	<b>5,959</b>	<b>5,537</b>	<b>1,415</b>	<b>712</b>	<b>703</b>
0029	Drass	Total	1,868	14,323	7,346	6,977	2,667	1,364	1,303
		Rural	1,868	14,323	7,346	6,977	2,667	1,364	1,303
		Urban	-	-	-	-	-	-	-
0030	Kargil	Total	3,163	24,215	12,244	11,971	4,030	2,023	2,007
		Rural	3,163	24,215	12,244	11,971	4,030	2,023	2,007
		Urban	-	-	-	-	-	-	-
0031	Shakar Chiktan	Total	1,564	10,931	5,716	5,215	1,568	772	796
		Rural	1,564	10,931	5,716	5,215	1,568	772	796
		Urban	-	-	-	-	-	-	-
0032	Shargole	Total	1,556	11,219	5,789	5,430	1,470	776	694
		Rural	1,556	11,219	5,789	5,430	1,470	776	694
		Urban	-	-	-	-	-	-	-
0033	Zanskar	Total	1,969	11,557	5,804	5,753	1,626	837	789
		Rural	1,969	11,557	5,804	5,753	1,626	837	789
		Urban	-	-	-	-	-	-	-
0034	Lungnak	Total	330	2,120	1,137	983	266	133	133
		Rural	330	2,120	1,137	983	266	133	133
		Urban	-	-	-	-	-	-	-
0035	Sankoo	Total	2,247	17,110	8,729	8,381	2,563	1,298	1,265
		Rural	2,247	17,110	8,729	8,381	2,563	1,298	1,265
		Urban	-	-	-	-	-	-	-
0036	Taifsuru	Total	1,101	8,209	4,196	4,013	1,368	676	692
		Rural	1,101	8,209	4,196	4,013	1,368	676	692
		Urban	-	-	-	-	-	-	-
	Gundmagalpur								
0037	Trespore	Total	1,402	11,156	5,732	5,424	1,867	938	929
		Rural	1,402	11,156	5,732	5,424	1,867	938	929
		Urban	-	-	-	-	-	-	-
	<b>URBAN</b>								
800048	Kargil (MC)	Urban	1,789	11,496	5,959	5,537	1,415	712	703

PRIMARY CENSUS ABSTRACT

FOR SCHEDULED TRIBES

Literates			Illiterates			Total workers			Total/ Rural/	District/ CD Block/ Town
Persons	Males	Females	Persons	Males	Females	Persons	Males	Females	Urban	
11	12	13	14	15	16	17	18	19	3	2
<b>70,760</b>	<b>42,494</b>	<b>28,266</b>	<b>51,576</b>	<b>20,158</b>	<b>31,418</b>	<b>37,760</b>	<b>26,567</b>	<b>11,193</b>	<b>Total</b>	<b>Kargil - District</b>
<b>62,778</b>	<b>37,747</b>	<b>25,031</b>	<b>48,062</b>	<b>18,946</b>	<b>29,116</b>	<b>34,465</b>	<b>24,236</b>	<b>10,229</b>	<b>Rural</b>	
<b>7,982</b>	<b>4,747</b>	<b>3,235</b>	<b>3,514</b>	<b>1,212</b>	<b>2,302</b>	<b>3,295</b>	<b>2,331</b>	<b>964</b>	<b>Urban</b>	
8,931	5,221	3,710	5,392	2,125	3,267	3,193	2,607	586	Total	Drass
8,931	5,221	3,710	5,392	2,125	3,267	3,193	2,607	586	Rural	
-	-	-	-	-	-	-	-	-	-	Urban
13,735	8,215	5,520	10,480	4,029	6,451	6,470	5,091	1,379	Total	Kargil
13,735	8,215	5,520	10,480	4,029	6,451	6,470	5,091	1,379	Rural	
-	-	-	-	-	-	-	-	-	-	Urban
6,614	4,018	2,596	4,317	1,698	2,619	3,718	2,460	1,258	Total	Shakar Chiktan
6,614	4,018	2,596	4,317	1,698	2,619	3,718	2,460	1,258	Rural	
-	-	-	-	-	-	-	-	-	-	Urban
7,187	4,208	2,979	4,032	1,581	2,451	4,531	2,766	1,765	Total	Shargole
7,187	4,208	2,979	4,032	1,581	2,451	4,531	2,766	1,765	Rural	
-	-	-	-	-	-	-	-	-	-	Urban
5,968	3,674	2,294	5,589	2,130	3,459	5,192	2,863	2,329	Total	Zanskar
5,968	3,674	2,294	5,589	2,130	3,459	5,192	2,863	2,329	Rural	
-	-	-	-	-	-	-	-	-	-	Urban
1,071	728	343	1,049	409	640	1,123	584	539	Total	Lungnak
1,071	728	343	1,049	409	640	1,123	584	539	Rural	
-	-	-	-	-	-	-	-	-	-	Urban
9,211	5,518	3,693	7,899	3,211	4,688	5,012	3,776	1,236	Total	Sankoo
9,211	5,518	3,693	7,899	3,211	4,688	5,012	3,776	1,236	Rural	
-	-	-	-	-	-	-	-	-	-	Urban
4,265	2,584	1,681	3,944	1,612	2,332	2,525	1,739	786	Total	Taifsuru
4,265	2,584	1,681	3,944	1,612	2,332	2,525	1,739	786	Rural	
-	-	-	-	-	-	-	-	-	-	Urban
5,796	3,581	2,215	5,360	2,151	3,209	2,701	2,350	351	Total	Gundmagalpur Trespore
5,796	3,581	2,215	5,360	2,151	3,209	2,701	2,350	351	Rural	
-	-	-	-	-	-	-	-	-	-	Urban
										<b>URBAN</b>
7,982	4,747	3,235	3,514	1,212	2,302	3,295	2,331	964	Urban	Kargil (MC)

## PRIMARY CENSUS ABSTRACT

Location code number	District/ CD Block/ Town	Total/ Rural/ Urban	Industrial category								
			Main workers			Cultivators			Agricultural labourers		
			Persons	Males	Females	Persons	Males	Females	Persons	Males	Females
1	2	3	20	21	22	23	24	25	26	27	28
004	Kargil - District	Total	16,713	13,359	3,354	1,680	958	722	491	251	240
		Rural	14,307	11,467	2,840	1,633	930	703	474	238	236
		Urban	2,406	1,892	514	47	28	19	17	13	4
0029	Drass	Total	1,745	1,469	276	51	36	15	12	9	3
		Rural	1,745	1,469	276	51	36	15	12	9	3
		Urban	-	-	-	-	-	-	-	-	-
0030	Kargil	Total	3,233	2,847	386	365	287	78	38	33	5
		Rural	3,233	2,847	386	365	287	78	38	33	5
		Urban	-	-	-	-	-	-	-	-	-
0031	Shakar Chiktan	Total	1,789	1,540	249	104	92	12	57	44	13
		Rural	1,789	1,540	249	104	92	12	57	44	13
		Urban	-	-	-	-	-	-	-	-	-
0032	Shargole	Total	1,781	1,340	441	109	62	47	57	49	8
		Rural	1,781	1,340	441	109	62	47	57	49	8
		Urban	-	-	-	-	-	-	-	-	-
0033	Zanskar	Total	2,097	1,426	671	481	201	280	273	76	197
		Rural	2,097	1,426	671	481	201	280	273	76	197
		Urban	-	-	-	-	-	-	-	-	-
0034	Lungnak	Total	441	217	224	340	137	203	-	-	-
		Rural	441	217	224	340	137	203	-	-	-
		Urban	-	-	-	-	-	-	-	-	-
0035	Sankoo	Total	1,616	1,301	315	154	98	56	25	20	5
		Rural	1,616	1,301	315	154	98	56	25	20	5
		Urban	-	-	-	-	-	-	-	-	-
0036	Taifsuru	Total	773	620	153	14	9	5	7	4	3
		Rural	773	620	153	14	9	5	7	4	3
		Urban	-	-	-	-	-	-	-	-	-
0037	Gundmagalpur Trespore	Total	832	707	125	15	8	7	5	3	2
		Rural	832	707	125	15	8	7	5	3	2
		Urban	-	-	-	-	-	-	-	-	-
<b>URBAN</b>											
800048	Kargil (MC)	Urban	2,406	1,892	514	47	28	19	17	13	4

PRIMARY CENSUS ABSTRACT

**FOR SCHEDULED TRIBES**

of main workers

Household industry workers			Other workers			Marginal workers			Total/ Rural/ Urban	District/ CD Block/ Town
Persons	Males	Females	Persons	Males	Females	Persons	Males	Females	3	2
29	30	31	32	33	34	35	36	37		
263	200	63	14,279	11,950	2,329	21,047	13,208	7,839	Total	Kargil - District
253	192	61	11,947	10,107	1,840	20,158	12,769	7,389	Rural	
10	8	2	2,332	1,843	489	889	439	450	Urban	
60	45	15	1,622	1,379	243	1,448	1,138	310	Total	Drass
60	45	15	1,622	1,379	243	1,448	1,138	310	Rural	
-	-	-	-	-	-	-	-	-	Urban	
35	16	19	2,795	2,511	284	3,237	2,244	993	Total	Kargil
35	16	19	2,795	2,511	284	3,237	2,244	993	Rural	
-	-	-	-	-	-	-	-	-	Urban	
8	8	-	1,620	1,396	224	1,929	920	1,009	Total	Shakar Chiktan
8	8	-	1,620	1,396	224	1,929	920	1,009	Rural	
-	-	-	-	-	-	-	-	-	Urban	
15	9	6	1,600	1,220	380	2,750	1,426	1,324	Total	Shargole
15	9	6	1,600	1,220	380	2,750	1,426	1,324	Rural	
-	-	-	-	-	-	-	-	-	Urban	
50	42	8	1,293	1,107	186	3,095	1,437	1,658	Total	Zanskar
50	42	8	1,293	1,107	186	3,095	1,437	1,658	Rural	
-	-	-	-	-	-	-	-	-	Urban	
2	1	1	99	79	20	682	367	315	Total	Lungnak
2	1	1	99	79	20	682	367	315	Rural	
-	-	-	-	-	-	-	-	-	Urban	
66	58	8	1,371	1,125	246	3,396	2,475	921	Total	Sankoo
66	58	8	1,371	1,125	246	3,396	2,475	921	Rural	
-	-	-	-	-	-	-	-	-	Urban	
5	4	1	747	603	144	1,752	1,119	633	Total	Taifsuru
5	4	1	747	603	144	1,752	1,119	633	Rural	
-	-	-	-	-	-	-	-	-	Urban	
12	9	3	800	687	113	1,869	1,643	226	Total	Gundmagalpur Trespore
12	9	3	800	687	113	1,869	1,643	226	Rural	
-	-	-	-	-	-	-	-	-	Urban	
10	8	2	2,332	1,843	489	889	439	450	Urban	<b>URBAN</b> Kargil (MC)

## PRIMARY CENSUS ABSTRACT

Location code number	District/ CD Block/ Town	Total/ Rural/ Urban	Industrial category of								
			Cultivators			Agricultural labourers			Household industry workers		
			Persons	Males	Females	Persons	Males	Females	Persons	Males	Females
1	2	3	38	39	40	41	42	43	44	45	46
004	Kargil - District	Total	6,228	3,023	3,205	3,043	1,456	1,587	904	262	642
		Rural	5,869	2,953	2,916	3,019	1,440	1,579	812	243	569
		Urban	359	70	289	24	16	8	92	19	73
0029	Drass	Total	127	63	64	41	36	5	144	53	91
		Rural	127	63	64	41	36	5	144	53	91
		Urban	-	-	-	-	-	-	-	-	-
0030	Kargil	Total	1,143	574	569	190	147	43	168	49	119
		Rural	1,143	574	569	190	147	43	168	49	119
		Urban	-	-	-	-	-	-	-	-	-
0031	Shakar Chiktan	Total	932	444	488	368	130	238	185	15	170
		Rural	932	444	488	368	130	238	185	15	170
		Urban	-	-	-	-	-	-	-	-	-
0032	Shargole	Total	834	227	607	269	101	168	61	23	38
		Rural	834	227	607	269	101	168	61	23	38
		Urban	-	-	-	-	-	-	-	-	-
0033	Zanskar	Total	1,252	601	651	1,403	576	827	47	18	29
		Rural	1,252	601	651	1,403	576	827	47	18	29
		Urban	-	-	-	-	-	-	-	-	-
0034	Lungnak	Total	396	201	195	166	58	108	4	4	-
		Rural	396	201	195	166	58	108	4	4	-
		Urban	-	-	-	-	-	-	-	-	-
0035	Sankoo	Total	473	301	172	185	160	25	97	51	46
		Rural	473	301	172	185	160	25	97	51	46
		Urban	-	-	-	-	-	-	-	-	-
0036	Taifsuru	Total	297	207	90	209	84	125	55	10	45
		Rural	297	207	90	209	84	125	55	10	45
		Urban	-	-	-	-	-	-	-	-	-
0037	Gundmagalpur Trespore	Total	415	335	80	188	148	40	51	20	31
		Rural	415	335	80	188	148	40	51	20	31
		Urban	-	-	-	-	-	-	-	-	-
<b>URBAN</b>											
800048	Kargil (MC)	Urban	359	70	289	24	16	8	92	19	73

## PRIMARY CENSUS ABSTRACT

## FOR SCHEDULED TRIBES

marginal workers						Total/ Rural/ Urban	District/ CD Block/ Town	Location code number
Other workers			Non-workers					
Persons	Males	Females	Persons	Males	Females			
47	48	49	50	51	52	3	2	1
10,872	8,467	2,405	84,576	36,085	48,491	Total	Kargil - District	004
10,458	8,133	2,325	76,375	32,457	43,918	Rural		
414	334	80	8,201	3,628	4,573	Urban		
1,136	986	150	11,130	4,739	6,391	Total	Drass	0029
1,136	986	150	11,130	4,739	6,391	Rural		
-	-	-	-	-	-	Urban		
1,736	1,474	262	17,745	7,153	10,592	Total	Kargil	0030
1,736	1,474	262	17,745	7,153	10,592	Rural		
-	-	-	-	-	-	Urban		
444	331	113	7,213	3,256	3,957	Total	Shakar Chiktan	0031
444	331	113	7,213	3,256	3,957	Rural		
-	-	-	-	-	-	Urban		
1,586	1,075	511	6,688	3,023	3,665	Total	Shargole	0032
1,586	1,075	511	6,688	3,023	3,665	Rural		
-	-	-	-	-	-	Urban		
393	242	151	6,365	2,941	3,424	Total	Zanskar	0033
393	242	151	6,365	2,941	3,424	Rural		
-	-	-	-	-	-	Urban		
116	104	12	997	553	444	Total	Lungnak	0034
116	104	12	997	553	444	Rural		
-	-	-	-	-	-	Urban		
2,641	1,963	678	12,098	4,953	7,145	Total	Sankoo	0035
2,641	1,963	678	12,098	4,953	7,145	Rural		
-	-	-	-	-	-	Urban		
1,191	818	373	5,684	2,457	3,227	Total	Taifuru	0036
1,191	818	373	5,684	2,457	3,227	Rural		
-	-	-	-	-	-	Urban		
1,215	1,140	75	8,455	3,382	5,073	Total	Gundmagalpur Trespore	0037
1,215	1,140	75	8,455	3,382	5,073	Rural		
-	-	-	-	-	-	Urban		
414	334	80	8,201	3,628	4,573	Urban	<b>URBAN</b> Kargil (MC)	800048



**Rural PCA-C.D. blocks wise  
Village Primary Census  
Abstract**



VILLAGE PRIMARY  
C D Block -

Location code number	Name of Village	Area of Village in hectares	Number of households	Total population (including institutional and houseless population)			Population in the age-group 0-6		
				Persons	Males	Females	Persons	Males	Females
1	2	3	4	5	6	7	8	9	10
<b>0029</b>	<b>Drass (Total)</b>	<b>2,274.51</b>	<b>2,149</b>	<b>21,988</b>	<b>14,731</b>	<b>7,257</b>	<b>2,767</b>	<b>1,417</b>	<b>1,350</b>
<b>0029</b>	<b>Drass (Rural)</b>	<b>2,274.51</b>	<b>2,149</b>	<b>21,988</b>	<b>14,731</b>	<b>7,257</b>	<b>2,767</b>	<b>1,417</b>	<b>1,350</b>
<b>0029</b>	<b>Drass (Urban)</b>	<b>0.00</b>	<b>-</b>	<b>-</b>	<b>-</b>	<b>-</b>	<b>-</b>	<b>-</b>	<b>-</b>
<b>RURAL</b>									
000977	Kaksar	161.10	147	958	497	461	191	101	90
000978	Kharbu	89.40	145	1,074	566	508	188	114	74
000996	Shimsha	130.30	93	794	418	376	170	84	86
000997	Thasgam	97.10	43	400	212	188	86	50	36
000998	Chokial	206.00	118	965	493	472	161	85	76
000999	Thrangos	92.30	51	413	211	202	66	33	33
001000	Biambiat	206.78	144	1,393	700	693	253	126	127
001001	Gindial	86.20	89	676	350	326	115	63	52
001002	Murad Bagh	56.20	89	691	336	355	87	44	43
001003	Goshan	262.60	189	1,485	763	722	290	140	150
001004	Holiyal	123.83	83	615	333	282	132	73	59
001005	Rambirpur (Drass)	251.30	404	8,397	7,758	639	196	105	91
001006	Mushku	64.70	78	572	276	296	123	61	62
001008	Pandras	61.90	109	731	390	341	129	66	63
001009	Matayan	67.20	62	500	247	253	89	39	50
001010	Tronjen (Trankuchan)	89.00	153	1,094	548	546	235	111	124
001011	Yalboo	139.60	99	763	409	354	159	80	79
001013	Jusgund	89.00	53	467	224	243	97	42	55

## PRIMARY CENSUS ABSTRACT

## CENSUS ABSTRACT

Drass

Scheduled Castes population			Scheduled Tribes population			Literates			Name of Village
Persons	Males	Females	Persons	Males	Females	Persons	Males	Females	
11	12	13	14	15	16	17	18	19	2
7	3	4	14,323	7,346	6,977	16,333	12,460	3,873	<b>Drass (Total)</b>
7	3	4	14,323	7,346	6,977	16,333	12,460	3,873	<b>Drass (Rural)</b>
-	-	-	-	-	-	-	-	-	<b>Drass (Urban)</b>
<b>RURAL</b>									
-	-	-	867	456	411	509	330	179	Kaksar
-	-	-	1,064	559	505	702	423	279	Kharbu
-	-	-	788	416	372	480	305	175	Shimsha
-	-	-	398	210	188	222	137	85	Thasgam
-	-	-	959	490	469	628	349	279	Chokial
-	-	-	381	193	188	254	147	107	Thrangos
7	3	4	1,274	639	635	879	489	390	Biambiat
-	-	-	671	347	324	461	263	198	Gindial
-	-	-	691	336	355	460	255	205	Murad Bagh
-	-	-	1,476	758	718	914	530	384	Goshan
-	-	-	610	331	279	350	218	132	Holiyal
-	-	-	1,041	528	513	7,944	7,524	420	Rambirpur (Drass)
-	-	-	571	276	295	340	183	157	Mushku
-	-	-	721	386	335	500	301	199	Pandras
-	-	-	497	245	252	270	168	102	Matayan
-	-	-	1,087	544	543	668	386	282	Tronjen (Trankuchan)
-	-	-	763	409	354	460	291	169	Yalboo
-	-	-	464	223	241	292	161	131	Jusgund

**VILLAGE PRIMARY  
C D Block -**

Location code number	Name of Village	Illiterates			Total workers			Main workers		
		Persons	Males	Females	Persons	Males	Females	Persons	Males	Females
1	2	20	21	22	23	24	25	26	27	28
<b>0029</b>	<b>Drass (Total)</b>	<b>5,655</b>	<b>2,271</b>	<b>3,384</b>	<b>10,541</b>	<b>9,843</b>	<b>698</b>	<b>8,608</b>	<b>8,236</b>	<b>372</b>
<b>0029</b>	<b>Drass (Rural)</b>	<b>5,655</b>	<b>2,271</b>	<b>3,384</b>	<b>10,541</b>	<b>9,843</b>	<b>698</b>	<b>8,608</b>	<b>8,236</b>	<b>372</b>
<b>0029</b>	<b>Drass (Urban)</b>	-	-	-	-	-	-	-	-	-
	<b>RURAL</b>									
000977	Kaksar	449	167	282	215	172	43	131	123	8
000978	Kharbu	372	143	229	345	231	114	170	139	31
000996	Shimsha	314	113	201	138	123	15	72	65	7
000997	Thasgam	178	75	103	72	65	7	53	50	3
000998	Chokial	337	144	193	195	154	41	131	96	35
000999	Thrangos	159	64	95	89	80	9	43	34	9
001000	Biambiat	514	211	303	353	279	74	226	178	48
001001	Gindial	215	87	128	126	118	8	89	82	7
001002	Murad Bagh	231	81	150	158	128	30	95	71	24
001003	Goshan	571	233	338	370	249	121	100	87	13
001004	Holiyal	265	115	150	113	108	5	60	56	4
001005	Rambirpur (Drass)	453	234	219	7,529	7,408	121	6,966	6,851	115
001006	Mushku	232	93	139	98	76	22	61	53	8
001008	Pandras	231	89	142	159	132	27	101	85	16
001009	Matayan	230	79	151	106	94	12	49	41	8
001010	Tronjen (Trankuchan)	426	162	264	216	198	18	122	108	14
001011	Yalboo	303	118	185	164	144	20	86	72	14
001013	Jusgund	175	63	112	95	84	11	53	45	8

## PRIMARY CENSUS ABSTRACT

## CENSUS ABSTRACT

Drass

Industrial category of main workers													Name of Village 2
Cultivators			Agricultural labourers			Household industry workers			Other workers				
Persons	Males	Females	Persons	Males	Females	Persons	Males	Females	Persons	Males	Females		
29	30	31	32	33	34	35	36	37	38	39	40		
109	93	16	16	13	3	60	45	15	8,423	8,085	338	Drass (Total)	
109	93	16	16	13	3	60	45	15	8,423	8,085	338	Drass (Rural)	
-	-	-	-	-	-	-	-	-	-	-	-	Drass (Urban)	
RURAL													
-	-	-	-	-	-	1	1	-	130	122	8	Kaksar	
20	14	6	6	6	-	37	30	7	107	89	18	Kharbu	
3	2	1	-	-	-	2	2	-	67	61	6	Shimsha	
6	6	-	-	-	-	-	-	-	47	44	3	Thasgam	
4	2	2	2	1	1	-	-	-	125	93	32	Chokial	
-	-	-	-	-	-	-	-	-	43	34	9	Thrangos	
4	2	2	1	-	1	-	-	-	221	176	45	Biambiat	
1	1	-	-	-	-	1	1	-	87	80	7	Gindial	
-	-	-	-	-	-	1	1	-	94	70	24	Murad Bagh	
4	3	1	2	1	1	11	6	5	83	77	6	Goshan	
3	2	1	-	-	-	-	-	-	57	54	3	Holiyal	
60	60	-	4	4	-	-	-	-	6,902	6,787	115	Rambirpur (Drass)	
2	1	1	1	1	-	1	1	-	57	50	7	Mushku	
-	-	-	-	-	-	1	-	1	100	85	15	Pandras	
1	-	1	-	-	-	-	-	-	48	41	7	Matayan	
-	-	-	-	-	-	-	-	-	122	108	14	Tronjen (Trankuchan)	
1	-	1	-	-	-	-	-	-	85	72	13	Yalboo	
-	-	-	-	-	-	5	3	2	48	42	6	Jusgund	

**VILLAGE PRIMARY  
C D Block -**

Location code number	Name of Village	Industrial category								
		Marginal workers			Cultivators			Agricultural labourers		
		Persons	Males	Females	Persons	Males	Females	Persons	Males	Females
1	2	41	42	43	44	45	46	47	48	49
<b>0029</b>	<b>Drass (Total)</b>	<b>1,933</b>	<b>1,607</b>	<b>326</b>	<b>141</b>	<b>67</b>	<b>74</b>	<b>49</b>	<b>44</b>	<b>5</b>
<b>0029</b>	<b>Drass (Rural)</b>	<b>1,933</b>	<b>1,607</b>	<b>326</b>	<b>141</b>	<b>67</b>	<b>74</b>	<b>49</b>	<b>44</b>	<b>5</b>
<b>0029</b>	<b>Drass (Urban)</b>	-	-	-	-	-	-	-	-	-
	<b>RURAL</b>									
000977	Kaksar	84	49	35	37	3	34	1	1	-
000978	Kharbu	175	92	83	41	30	11	12	9	3
000996	Shimsha	66	58	8	5	3	2	1	1	-
000997	Thasgam	19	15	4	2	1	1	-	-	-
000998	Chokial	64	58	6	6	6	-	3	3	-
000999	Thrangos	46	46	-	-	-	-	-	-	-
001000	Biambiat	127	101	26	2	2	-	3	2	1
001001	Gindial	37	36	1	3	3	-	7	6	1
001002	Murad Bagh	63	57	6	1	-	1	-	-	-
001003	Goshan	270	162	108	22	9	13	11	11	-
001004	Holiyal	53	52	1	1	1	-	-	-	-
001005	Rambirpur (Drass)	563	557	6	4	4	-	9	9	-
001006	Mushku	37	23	14	-	-	-	1	1	-
001008	Pandras	58	47	11	8	3	5	-	-	-
001009	Matayan	57	53	4	2	-	2	-	-	-
001010	Tronjen (Trankuchan)	94	90	4	2	1	1	1	1	-
001011	Yalboo	78	72	6	5	1	4	-	-	-
001013	Jusgund	42	39	3	-	-	-	-	-	-

## PRIMARY CENSUS ABSTRACT

## CENSUS ABSTRACT

## Drass

of marginal workers

Household industry workers			Other workers			Non-workers			Name of Village	Location code number
Persons	Males	Females	Persons	Males	Females	Persons	Males	Females		
50	51	52	53	54	55	56	57	58	2	1
144	53	91	1,599	1,443	156	11,447	4,888	6,559	Drass (Total)	0029
144	53	91	1,599	1,443	156	11,447	4,888	6,559	Drass (Rural)	0029
-	-	-	-	-	-	-	-	-	Drass (Urban)	0029
<b>RURAL</b>										
1	1	-	45	44	1	743	325	418	Kaksar	000977
30	13	17	92	40	52	729	335	394	Kharbu	000978
2	2	-	58	52	6	656	295	361	Shimsha	000996
-	-	-	17	14	3	328	147	181	Thasgam	000997
-	-	-	55	49	6	770	339	431	Chokial	000998
-	-	-	46	46	-	324	131	193	Thrangos	000999
2	1	1	120	96	24	1,040	421	619	Biambiat	001000
-	-	-	27	27	-	550	232	318	Gindial	001001
4	2	2	58	55	3	533	208	325	Murad Bagh	001002
89	19	70	148	123	25	1,115	514	601	Goshan	001003
-	-	-	52	51	1	502	225	277	Holiyal	001004
2	2	-	548	542	6	868	350	518	Rambirpur (Drass)	001005
3	2	1	33	20	13	474	200	274	Mushku	001006
-	-	-	50	44	6	572	258	314	Pandras	001008
4	4	-	51	49	2	394	153	241	Matayan	001009
-	-	-	91	88	3	878	350	528	Tronjen (Trankuchan)	001010
1	1	-	72	70	2	599	265	334	Yalboo	001011
6	6	-	36	33	3	372	140	232	Jusgund	001013

VILLAGE PRIMARY  
C D Block -

Location code number	Name of Village	Area of Village in hectares	Number of households	Total population (including institutional and houseless population)			Population in the age-group 0-6		
				Persons	Males	Females	Persons	Males	Females
1	2	3	4	5	6	7	8	9	10
<b>0030</b>	<b>Kargil (Total)</b>	<b>2,840.75</b>	<b>3,293</b>	<b>25,174</b>	<b>12,723</b>	<b>12,451</b>	<b>4,194</b>	<b>2,094</b>	<b>2,100</b>
<b>0030</b>	<b>Kargil (Rural)</b>	<b>2,840.75</b>	<b>3,293</b>	<b>25,174</b>	<b>12,723</b>	<b>12,451</b>	<b>4,194</b>	<b>2,094</b>	<b>2,100</b>
<b>0030</b>	<b>Kargil (Urban)</b>	<b>0.00</b>	<b>-</b>	<b>-</b>	<b>-</b>	<b>-</b>	<b>-</b>	<b>-</b>	<b>-</b>
	<b>RURAL</b>								
000962	Chulichan	125.90	112	912	467	445	174	83	91
000963	Silmo	166.70	209	1,627	806	821	311	153	158
000964	Derchiks	95.50	85	624	321	303	113	45	68
000965	Garkon	202.70	242	1,287	662	625	206	109	97
000966	Lalung	97.90	87	685	349	336	135	66	69
000967	Apati	110.90	142	1,245	652	593	265	154	111
000968	Yourbaltak	203.60	259	2,177	1,087	1,090	343	169	174
000969	Akchamal	101.20	239	1,909	967	942	257	128	129
000970	Barchey	93.90	66	555	283	272	92	50	42
000971	Toumel	81.30	141	1,084	531	553	149	70	79
000972	Poyan	22.66	29	216	107	109	27	14	13
000973	Shilikchey	60.30	134	1,006	519	487	146	77	69
000974	Hardas	71.20	223	1,480	739	741	247	113	134
000975	Phultuks	9.70	36	280	131	149	45	17	28
000976	Karkit	110.89	276	2,373	1,193	1,180	508	247	261
000979	Chuliskambo	78.50	127	982	532	450	166	95	71
000994	Choskar	530.10	426	3,430	1,723	1,707	590	284	306
000995	Minji	348.40	322	2,331	1,174	1,157	273	145	128
001007	Batokul	16.60							
001012	Haripora	31.60							
001014	Batambis	53.80	48	332	163	169	51	27	24
001027	Safi	227.40	90	639	317	322	96	48	48

## PRIMARY CENSUS ABSTRACT

## CENSUS ABSTRACT

Kargil

Scheduled Castes population			Scheduled Tribes population			Literates			Name of Village
Persons	Males	Females	Persons	Males	Females	Persons	Males	Females	
11	12	13	14	15	16	17	18	19	2
-	-	-	24,215	12,244	11,971	14,284	8,545	5,739	Kargil (Total)
-	-	-	24,215	12,244	11,971	14,284	8,545	5,739	Kargil (Rural)
-	-	-	-	-	-	-	-	-	Kargil (Urban)
<b>RURAL</b>									
-	-	-	884	450	434	533	325	208	Chulichan
-	-	-	1,614	802	812	919	547	372	Silmo
-	-	-	615	315	300	324	192	132	Derchiks
-	-	-	1,264	650	614	652	376	276	Garkon
-	-	-	627	321	306	333	211	122	Lalung
-	-	-	1,236	647	589	641	397	244	Apati
-	-	-	2,087	1,041	1,046	1,250	749	501	Yourbaltak
-	-	-	1,869	946	923	1,200	735	465	Akchamal
-	-	-	555	283	272	285	178	107	Barchey
-	-	-	1,077	530	547	648	360	288	Toumel
-	-	-	215	107	108	118	70	48	Poyan
-	-	-	920	471	449	662	398	264	Shilikchey
-	-	-	1,335	674	661	940	550	390	Hardas
-	-	-	280	131	149	173	99	74	Phultuks
-	-	-	2,353	1,184	1,169	1,177	759	418	Karkit
-	-	-	968	524	444	582	390	192	Chuliskambo
-	-	-	3,044	1,530	1,514	1,938	1,151	787	Choskar
-	-	-	2,305	1,161	1,144	1,417	805	612	Minji
-----Un-inhabited-----									Batokul
-----Un-inhabited-----									Haripora
-	-	-	329	161	168	167	88	79	Batambis
-	-	-	638	316	322	325	165	160	Safi



**VILLAGE PRIMARY  
C D Block -**

Location code number	Name of Village	Illiterates			Total workers			Main workers		
		Persons	Males	Females	Persons	Males	Females	Persons	Males	Females
1	2	20	21	22	23	24	25	26	27	28
<b>0030</b>	<b>Kargil (Total)</b>	<b>10,890</b>	<b>4,178</b>	<b>6,712</b>	<b>6,715</b>	<b>5,291</b>	<b>1,424</b>	<b>3,378</b>	<b>2,978</b>	<b>400</b>
<b>0030</b>	<b>Kargil (Rural)</b>	<b>10,890</b>	<b>4,178</b>	<b>6,712</b>	<b>6,715</b>	<b>5,291</b>	<b>1,424</b>	<b>3,378</b>	<b>2,978</b>	<b>400</b>
<b>0030</b>	<b>Kargil (Urban)</b>	-	-	-	-	-	-	-	-	-
	<b>RURAL</b>									
000962	Chulichan	379	142	237	223	212	11	74	66	8
000963	Silmo	708	259	449	534	361	173	257	224	33
000964	Derchiks	300	129	171	194	174	20	68	58	10
000965	Garkon	635	286	349	257	212	45	88	75	13
000966	Lalung	352	138	214	162	151	11	55	48	7
000967	Apati	604	255	349	282	258	24	113	103	10
000968	Yourbaltak	927	338	589	527	489	38	472	441	31
000969	Akchamal	709	232	477	440	396	44	292	258	34
000970	Barchey	270	105	165	138	127	11	80	71	9
000971	Toumel	436	171	265	233	210	23	122	108	14
000972	Poyan	98	37	61	38	35	3	8	6	2
000973	Shilikchey	344	121	223	209	197	12	203	193	10
000974	Hardas	540	189	351	305	247	58	134	108	26
000975	Phultuks	107	32	75	95	54	41	27	23	4
000976	Karkit	1,196	434	762	992	541	451	288	271	17
000979	Chuliskambo	400	142	258	228	191	37	127	112	15
000994	Choskar	1,492	572	920	781	713	68	510	465	45
000995	Minji	914	369	545	614	465	149	281	237	44
001007	Batokul				-----Un-inhabited-----					
001012	Haripora				-----Un-inhabited-----					
001014	Batambis	165	75	90	163	82	81	35	14	21
001027	Safi	314	152	162	300	176	124	144	97	47

## PRIMARY CENSUS ABSTRACT

## CENSUS ABSTRACT

## Kargil

Industrial category of main workers													Name of Village 2
Cultivators			Agricultural labourers			Household industry workers			Other workers				
Persons	Males	Females	Persons	Males	Females	Persons	Males	Females	Persons	Males	Females		
29	30	31	32	33	34	35	36	37	38	39	40		
417	338	79	40	33	7	35	16	19	2,886	2,591	295	<b>Kargil (Total)</b>	
417	338	79	40	33	7	35	16	19	2,886	2,591	295	<b>Kargil (Rural)</b>	
-	-	-	-	-	-	-	-	-	-	-	-	<b>Kargil (Urban)</b>	
<b>RURAL</b>													
-	-	-	-	-	-	-	-	-	74	66	8	Chulichan	
-	-	-	1	-	1	-	-	-	256	224	32	Silmo	
-	-	-	-	-	-	-	-	-	68	58	10	Derchiks	
5	5	-	-	-	-	2	2	-	81	68	13	Garkon	
-	-	-	-	-	-	-	-	-	55	48	7	Lalung	
2	1	1	1	1	-	-	-	-	110	101	9	Apati	
3	1	2	-	-	-	-	-	-	469	440	29	Yourbaltak	
2	1	1	1	1	-	-	-	-	289	256	33	Akchamal	
-	-	-	-	-	-	-	-	-	80	71	9	Barchey	
2	1	1	1	1	-	1	1	-	118	105	13	Toumel	
-	-	-	-	-	-	-	-	-	8	6	2	Poyan	
119	116	3	4	4	-	1	1	-	79	72	7	Shilikchey	
9	3	6	5	2	3	4	4	-	116	99	17	Hardas	
-	-	-	1	-	1	-	-	-	26	23	3	Phultuks	
6	6	-	3	3	-	3	3	-	276	259	17	Karkit	
15	14	1	9	9	-	2	2	-	101	87	14	Chuliskambo	
162	143	19	-	-	-	1	1	-	347	321	26	Choskar	
5	1	4	3	3	-	1	1	-	272	232	40	Minji	
-----Un-inhabited-----												Batokul	
-----Un-inhabited-----												Haripora	
1	1	-	1	1	-	20	1	19	13	11	2	Batambis	
86	45	41	10	8	2	-	-	-	48	44	4	Safi	

**VILLAGE PRIMARY  
C D Block -**

		Industrial category								
Location code number	Name of Village	Marginal workers			Cultivators			Agricultural labourers		
		Persons	Males	Females	Persons	Males	Females	Persons	Males	Females
1	2	41	42	43	44	45	46	47	48	49
<b>0030</b>	<b>Kargil (Total)</b>	<b>3,337</b>	<b>2,313</b>	<b>1,024</b>	<b>1,157</b>	<b>587</b>	<b>570</b>	<b>202</b>	<b>154</b>	<b>48</b>
<b>0030</b>	<b>Kargil (Rural)</b>	<b>3,337</b>	<b>2,313</b>	<b>1,024</b>	<b>1,157</b>	<b>587</b>	<b>570</b>	<b>202</b>	<b>154</b>	<b>48</b>
<b>0030</b>	<b>Kargil (Urban)</b>	-	-	-	-	-	-	-	-	-
	<b>RURAL</b>									
000962	Chulichan	149	146	3	19	18	1	16	15	1
000963	Silmo	277	137	140	182	47	135	3	3	-
000964	Derchiks	126	116	10	109	102	7	3	3	-
000965	Garkon	169	137	32	38	33	5	17	16	1
000966	Lalung	107	103	4	-	-	-	-	-	-
000967	Apati	169	155	14	24	18	6	2	-	2
000968	Yourbaltak	55	48	7	38	35	3	1	-	1
000969	Akchamal	148	138	10	19	19	-	1	-	1
000970	Barchey	58	56	2	42	40	2	2	2	-
000971	Toumel	111	102	9	8	4	4	3	3	-
000972	Poyan	30	29	1	20	19	1	-	-	-
000973	Shilikchey	6	4	2	3	2	1	-	-	-
000974	Hardas	171	139	32	5	5	-	66	64	2
000975	Phultuks	68	31	37	1	-	1	-	-	-
000976	Karkit	704	270	434	522	165	357	12	5	7
000979	Chuliskambo	101	79	22	1	1	-	19	19	-
000994	Choskar	271	248	23	18	16	2	5	1	4
000995	Minji	333	228	105	3	1	2	-	-	-
001007	Batokul									
001012	Haripora									
001014	Batambis	128	68	60	20	19	1	2	1	1
001027	Safi	156	79	77	85	43	42	50	22	28

## PRIMARY CENSUS ABSTRACT

## CENSUS ABSTRACT

## Kargil

of marginal workers

Household industry workers			Other workers			Non-workers			Name of Village	Location code number
Persons	Males	Females	Persons	Males	Females	Persons	Males	Females		
50	51	52	53	54	55	56	57	58	2	1
169	49	120	1,809	1,523	286	18,459	7,432	11,027	Kargil (Total)	0030
169	49	120	1,809	1,523	286	18,459	7,432	11,027	Kargil (Rural)	0030
-	-	-	-	-	-	-	-	-	Kargil (Urban)	0030
<b>RURAL</b>										
-	-	-	114	113	1	689	255	434	Chulichan	000962
-	-	-	92	87	5	1,093	445	648	Silmo	000963
-	-	-	14	11	3	430	147	283	Derchiks	000964
1	-	1	113	88	25	1,030	450	580	Garkon	000965
-	-	-	107	103	4	523	198	325	Lalung	000966
1	1	-	142	136	6	963	394	569	Apati	000967
1	-	1	15	13	2	1,650	598	1,052	Yourbaltak	000968
3	3	-	125	116	9	1,469	571	898	Akchamal	000969
-	-	-	14	14	-	417	156	261	Barchey	000970
4	2	2	96	93	3	851	321	530	Toumel	000971
1	1	-	9	9	-	178	72	106	Poyan	000972
-	-	-	3	2	1	797	322	475	Shilikchey	000973
-	-	-	100	70	30	1,175	492	683	Hardas	000974
36	3	33	31	28	3	185	77	108	Phultuks	000975
30	9	21	140	91	49	1,381	652	729	Karkit	000976
7	4	3	74	55	19	754	341	413	Chuliskambo	000979
15	12	3	233	219	14	2,649	1,010	1,639	Choskar	000994
4	4	-	326	223	103	1,717	709	1,008	Minji	000995
-----Un-inhabited-----									Batokul	001007
-----Un-inhabited-----									Haripora	001012
66	10	56	40	38	2	169	81	88	Batambis	001014
-	-	-	21	14	7	339	141	198	Safi	001027

**VILLAGE PRIMARY  
C D Block -**

Location code number	Name of Village	Area of Village in hectares	Number of households	Total population (including institutional and houseless population)			Population in the age-group 0-6		
				Persons	Males	Females	Persons	Males	Females
1	2	3	4	5	6	7	8	9	10
<b>0031</b>	<b>Shakar Chiktan (Total)</b>	<b>1,458.50</b>	<b>1,609</b>	<b>11,233</b>	<b>5,871</b>	<b>5,362</b>	<b>1,610</b>	<b>794</b>	<b>816</b>
<b>0031</b>	<b>Shakar Chiktan (Rural)</b>	<b>1,458.50</b>	<b>1,609</b>	<b>11,233</b>	<b>5,871</b>	<b>5,362</b>	<b>1,610</b>	<b>794</b>	<b>816</b>
<b>0031</b>	<b>Shakar Chiktan (Urban)</b>	<b>0.00</b>	<b>-</b>	<b>-</b>	<b>-</b>	<b>-</b>	<b>-</b>	<b>-</b>	<b>-</b>
<b>RURAL</b>									
000983	Lamsusando	54.60	75	520	289	231	71	38	33
000984	Yogmakharbu	69.60	72	554	300	254	67	31	36
000985	Sanjak	25.50	61	416	232	184	57	33	24
000986	Chiktan	146.90	180	1,285	664	621	198	86	112
000987	Hagnis	129.10	260	1,624	849	775	245	126	119
000988	Shakar	172.80	277	1,922	1,003	919	315	153	162
001022	Kuksho	119.80	105	718	379	339	96	51	45
001023	Samrah	155.00	180	1,441	739	702	180	87	93
001024	Staktse	210.40	212	1,453	740	713	212	107	105
001025	Bodhkhharbu	309.20	138	970	501	469	113	56	57
001026	Heniskot	65.60	49	330	175	155	56	26	30

## PRIMARY CENSUS ABSTRACT

## CENSUS ABSTRACT

## Shakar Chiktan

Scheduled Castes population			Scheduled Tribes population			Literates			Name of Village
Persons	Males	Females	Persons	Males	Females	Persons	Males	Females	
11	12	13	14	15	16	17	18	19	2
1	1	-	10,931	5,716	5,215	6,812	4,132	2,680	Shakar Chiktan (Total)
1	1	-	10,931	5,716	5,215	6,812	4,132	2,680	Shakar Chiktan (Rural)
-	-	-	-	-	-	-	-	-	Shakar Chiktan (Urban)
<b>RURAL</b>									
-	-	-	517	286	231	295	194	101	Lamsusando
-	-	-	551	298	253	302	202	100	Yogmakharbu
-	-	-	408	229	179	271	172	99	Sanjak
1	1	-	1,283	662	621	768	472	296	Chiktan
-	-	-	1,541	803	738	1,061	631	430	Hagnis
-	-	-	1,878	980	898	1,097	708	389	Shakar
-	-	-	693	367	326	378	226	152	Kuksho
-	-	-	1,370	708	662	962	548	414	Samrah
-	-	-	1,442	735	707	867	505	362	Staktse
-	-	-	932	483	449	624	360	264	Bodhkhharbu
-	-	-	316	165	151	187	114	73	Heniskot

**VILLAGE PRIMARY  
C D Block -**

Location code number	Name of Village	Illiterates			Total workers			Main workers		
		Persons	Males	Females	Persons	Males	Females	Persons	Males	Females
1	2	20	21	22	23	24	25	26	27	28
<b>0031</b>	<b>Shakar Chiktan (Total)</b>	<b>4,421</b>	<b>1,739</b>	<b>2,682</b>	<b>3,791</b>	<b>2,519</b>	<b>1,272</b>	<b>1,830</b>	<b>1,576</b>	<b>254</b>
<b>0031</b>	<b>Shakar Chiktan (Rural)</b>	<b>4,421</b>	<b>1,739</b>	<b>2,682</b>	<b>3,791</b>	<b>2,519</b>	<b>1,272</b>	<b>1,830</b>	<b>1,576</b>	<b>254</b>
<b>0031</b>	<b>Shakar Chiktan (Urban)</b>	-	-	-	-	-	-	-	-	-
<b>RURAL</b>										
000983	Lamsusando	225	95	130	224	115	109	125	111	14
000984	Yogmakharbu	252	98	154	233	119	114	97	83	14
000985	Sanjak	145	60	85	102	96	6	60	56	4
000986	Chiktan	517	192	325	650	341	309	228	199	29
000987	Hagnis	563	218	345	371	329	42	260	226	34
000988	Shakar	825	295	530	506	389	117	231	202	29
001022	Kuksho	340	153	187	232	164	68	90	80	10
001023	Samrah	479	191	288	305	254	51	289	244	45
001024	Staktse	586	235	351	420	314	106	265	233	32
001025	Bodhkhharbu	346	141	205	559	295	264	147	112	35
001026	Heniskot	143	61	82	189	103	86	38	30	8

## PRIMARY CENSUS ABSTRACT

## CENSUS ABSTRACT

## Shakar Chiktan

Industrial category of main workers													Name of Village
Cultivators			Agricultural labourers			Household industry workers			Other workers				
Persons	Males	Females	Persons	Males	Females	Persons	Males	Females	Persons	Males	Females		
29	30	31	32	33	34	35	36	37	38	39	40	2	
105	93	12	57	44	13	8	8	-	1,660	1,431	229	<b>Shakar Chiktan (Total)</b>	
105	93	12	57	44	13	8	8	-	1,660	1,431	229	<b>Shakar Chiktan (Rural)</b>	
-	-	-	-	-	-	-	-	-	-	-	-	<b>Shakar Chiktan (Urban)</b>	
<b>RURAL</b>													
-	-	-	32	26	6	2	2	-	91	83	8	Lamsusando	
3	2	1	-	-	-	1	1	-	93	80	13	Yogmakharbu	
-	-	-	-	-	-	2	2	-	58	54	4	Sanjak	
4	3	1	1	1	-	2	2	-	221	193	28	Chiktan	
2	-	2	-	-	-	1	1	-	257	225	32	Hagnis	
9	8	1	11	7	4	-	-	-	211	187	24	Shakar	
11	11	-	8	7	1	-	-	-	71	62	9	Kuksho	
64	62	2	1	1	-	-	-	-	224	181	43	Samrah	
3	2	1	2	1	1	-	-	-	260	230	30	Staktse	
1	-	1	2	1	1	-	-	-	144	111	33	Bodhkharbu	
8	5	3	-	-	-	-	-	-	30	25	5	Heniskot	



**VILLAGE PRIMARY  
C D Block -**

		Industrial category								
Location code number	Name of Village	Marginal workers			Cultivators			Agricultural labourers		
		Persons	Males	Females	Persons	Males	Females	Persons	Males	Females
1	2	41	42	43	44	45	46	47	48	49
<b>0031</b>	<b>Shakar Chiktan (Total)</b>	<b>1,961</b>	<b>943</b>	<b>1,018</b>	<b>952</b>	<b>455</b>	<b>497</b>	<b>368</b>	<b>130</b>	<b>238</b>
<b>0031</b>	<b>Shakar Chiktan (Rural)</b>	<b>1,961</b>	<b>943</b>	<b>1,018</b>	<b>952</b>	<b>455</b>	<b>497</b>	<b>368</b>	<b>130</b>	<b>238</b>
<b>0031</b>	<b>Shakar Chiktan (Urban)</b>	-	-	-	-	-	-	-	-	-
<b>RURAL</b>										
000983	Lamsusando	99	4	95	-	-	-	1	-	1
000984	Yogmakharbu	136	36	100	118	21	97	3	3	-
000985	Sanjak	42	40	2	32	32	-	-	-	-
000986	Chiktan	422	142	280	159	76	83	149	26	123
000987	Hagnis	111	103	8	40	37	3	-	-	-
000988	Shakar	275	187	88	2	1	1	54	54	-
001022	Kuksho	142	84	58	29	29	-	94	41	53
001023	Samrah	16	10	6	2	2	-	1	-	1
001024	Staktse	155	81	74	23	11	12	64	5	59
001025	Bodhkhharbu	412	183	229	407	180	227	-	-	-
001026	Heniskot	151	73	78	140	66	74	2	1	1

## PRIMARY CENSUS ABSTRACT

## CENSUS ABSTRACT

## Shakar Chiktan

of marginal workers

Household industry workers			Other workers			Non-workers			Name of Village	Location code number
Persons	Males	Females	Persons	Males	Females	Persons	Males	Females		
50	51	52	53	54	55	56	57	58	2	1
185	15	170	456	343	113	7,442	3,352	4,090	Shakar Chiktan (Total)	0031
185	15	170	456	343	113	7,442	3,352	4,090	Shakar Chiktan (Rural)	0031
-	-	-	-	-	-	-	-	-	Shakar Chiktan (Urban)	0031
<b>RURAL</b>										
97	3	94	1	1	-	296	174	122	Lamsusando	000983
1	-	1	14	12	2	321	181	140	Yogmakharbu	000984
-	-	-	10	8	2	314	136	178	Sanjak	000985
82	10	72	32	30	2	635	323	312	Chiktan	000986
1	-	1	70	66	4	1,253	520	733	Hagnis	000987
1	1	-	218	131	87	1,416	614	802	Shakar	000988
-	-	-	19	14	5	486	215	271	Kuksho	001022
-	-	-	13	8	5	1,136	485	651	Samrah	001023
1	1	-	67	64	3	1,033	426	607	Staktse	001024
-	-	-	5	3	2	411	206	205	Bodhkharbu	001025
2	-	2	7	6	1	141	72	69	Heniskot	001026

VILLAGE PRIMARY  
C D Block -

Location code number	Name of Village	Area of Village in hectares	Number of households	Total population (including institutional and houseless population)			Population in the age-group 0-6		
				Persons	Males	Females	Persons	Males	Females
1	2	3	4	5	6	7	8	9	10
<b>0032</b>	<b>Shargole (Total)</b>	<b>1,727.80</b>	<b>1,625</b>	<b>11,728</b>	<b>6,024</b>	<b>5,704</b>	<b>1,537</b>	<b>802</b>	<b>735</b>
<b>0032</b>	<b>Shargole (Rural)</b>	<b>1,727.80</b>	<b>1,625</b>	<b>11,728</b>	<b>6,024</b>	<b>5,704</b>	<b>1,537</b>	<b>802</b>	<b>735</b>
<b>0032</b>	<b>Shargole (Urban)</b>	<b>0.00</b>	<b>-</b>	<b>-</b>	<b>-</b>	<b>-</b>	<b>-</b>	<b>-</b>	<b>-</b>
<b>RURAL</b>									
000980	Push Kum	344.80	505	3,419	1,836	1,583	435	235	200
000981	Kukste	32.00	47	349	183	166	59	30	29
000982	Karit	42.50	55	526	260	266	90	44	46
000989	Tacha	45.70	59	467	229	238	80	38	42
000990	Lochum	53.00	56	405	206	199	55	31	24
000991	Darkiat	40.80	36	254	137	117	22	14	8
000992	Nunamchey	41.30	24	199	100	99	34	14	20
000993	Skambo	71.60	96	623	307	316	76	37	39
001015	Phoo	111.70	76	610	311	299	82	44	38
001016	Tingdo	57.50	37	292	156	136	55	32	23
001017	Khachey	95.10	70	535	259	276	59	28	31
001018	Karamba	64.30	56	397	203	194	52	28	24
001019	Shargol	88.60	75	486	263	223	65	39	26
001020	Malbekh	317.00	189	1,393	702	691	184	103	81
001021	Wakhade	321.90	244	1,773	872	901	189	85	104

## PRIMARY CENSUS ABSTRACT

## CENSUS ABSTRACT

Shargole

Scheduled Castes population			Scheduled Tribes population			Literates			Name of Village
Persons	Males	Females	Persons	Males	Females	Persons	Males	Females	
11	12	13	14	15	16	17	18	19	2
2	1	1	11,219	5,789	5,430	7,482	4,373	3,109	Shargole (Total)
2	1	1	11,219	5,789	5,430	7,482	4,373	3,109	Shargole (Rural)
-	-	-	-	-	-	-	-	-	Shargole (Urban)
<b>RURAL</b>									
-	-	-	3,373	1,798	1,575	2,248	1,380	868	Push Kum
-	-	-	348	182	166	197	118	79	Kukste
-	-	-	526	260	266	309	181	128	Karit
-	-	-	467	229	238	225	131	94	Tacha
-	-	-	405	206	199	214	135	79	Lochum
-	-	-	239	129	110	186	110	76	Darkiat
-	-	-	199	100	99	114	73	41	Nunamchey
-	-	-	557	278	279	408	233	175	Skambo
-	-	-	609	311	298	348	193	155	Phoo
-	-	-	269	144	125	171	100	71	Tingdo
2	1	1	530	257	273	353	183	170	Khachey
-	-	-	397	203	194	260	144	116	Karamba
-	-	-	486	263	223	327	198	129	Shargol
-	-	-	1,373	691	682	915	511	404	Malbekh
-	-	-	1,441	738	703	1,207	683	524	Wakhade

**VILLAGE PRIMARY  
C D Block -**

Location code number	Name of Village	Illiterates			Total workers			Main workers		
		Persons	Males	Females	Persons	Males	Females	Persons	Males	Females
1	2	20	21	22	23	24	25	26	27	28
<b>0032</b>	<b>Shargole (Total)</b>	<b>4,246</b>	<b>1,651</b>	<b>2,595</b>	<b>4,702</b>	<b>2,890</b>	<b>1,812</b>	<b>1,889</b>	<b>1,434</b>	<b>455</b>
<b>0032</b>	<b>Shargole (Rural)</b>	<b>4,246</b>	<b>1,651</b>	<b>2,595</b>	<b>4,702</b>	<b>2,890</b>	<b>1,812</b>	<b>1,889</b>	<b>1,434</b>	<b>455</b>
<b>0032</b>	<b>Shargole (Urban)</b>	-	-	-	-	-	-	-	-	-
<b>RURAL</b>										
000980	Push Kum	1,171	456	715	1,139	806	333	493	427	66
000981	Kukste	152	65	87	88	76	12	25	18	7
000982	Karit	217	79	138	115	106	9	42	35	7
000989	Tacha	242	98	144	179	93	86	105	55	50
000990	Lochum	191	71	120	172	89	83	121	50	71
000991	Darkiat	68	27	41	60	55	5	35	30	5
000992	Nunamchey	85	27	58	59	55	4	28	24	4
000993	Skambo	215	74	141	281	134	147	48	28	20
001015	Phoo	262	118	144	273	157	116	75	54	21
001016	Tingdo	121	56	65	124	61	63	37	37	-
001017	Khachey	182	76	106	429	210	219	102	81	21
001018	Karamba	137	59	78	354	178	176	47	38	9
001019	Shargol	159	65	94	215	117	98	69	63	6
001020	Malbekh	478	191	287	690	353	337	266	191	75
001021	Wakhade	566	189	377	524	400	124	396	303	93

## PRIMARY CENSUS ABSTRACT

## CENSUS ABSTRACT

Shargole

Industrial category of main workers													Name of Village 2
Cultivators			Agricultural labourers			Household industry workers			Other workers				
Persons	Males	Females	Persons	Males	Females	Persons	Males	Females	Persons	Males	Females		
29	30	31	32	33	34	35	36	37	38	39	40		
118	69	49	75	66	9	16	9	7	1,680	1,290	390	<b>Shargole (Total)</b>	
118	69	49	75	66	9	16	9	7	1,680	1,290	390	<b>Shargole (Rural)</b>	
-	-	-	-	-	-	-	-	-	-	-	-	<b>Shargole (Urban)</b>	
<b>RURAL</b>													
18	6	12	-	-	-	2	1	1	473	420	53	Push Kum	
1	-	1	-	-	-	-	-	-	24	18	6	Kukste	
-	-	-	-	-	-	2	2	-	40	33	7	Karit	
6	1	5	1	1	-	2	1	1	96	52	44	Tacha	
11	2	9	1	-	1	1	1	-	108	47	61	Lochum	
-	-	-	-	-	-	-	-	-	35	30	5	Darkiat	
-	-	-	-	-	-	-	-	-	28	24	4	Nunamchey	
-	-	-	-	-	-	-	-	-	48	28	20	Skambo	
-	-	-	1	1	-	-	-	-	74	53	21	Phoo	
36	36	-	-	-	-	-	-	-	1	1	-	Tingdo	
12	10	2	5	4	1	-	-	-	85	67	18	Khachey	
-	-	-	-	-	-	1	1	-	46	37	9	Karamba	
1	1	-	-	-	-	-	-	-	68	62	6	Shargol	
2	1	1	10	5	5	1	1	-	253	184	69	Malbekh	
31	12	19	57	55	2	7	2	5	301	234	67	Wakhade	

**VILLAGE PRIMARY  
C D Block -**

Location code number	Name of Village	Industrial category								
		Marginal workers			Cultivators			Agricultural labourers		
		Persons	Males	Females	Persons	Males	Females	Persons	Males	Females
1	2	41	42	43	44	45	46	47	48	49
<b>0032</b>	<b>Shargole (Total)</b>	<b>2,813</b>	<b>1,456</b>	<b>1,357</b>	<b>844</b>	<b>230</b>	<b>614</b>	<b>274</b>	<b>105</b>	<b>169</b>
<b>0032</b>	<b>Shargole (Rural)</b>	<b>2,813</b>	<b>1,456</b>	<b>1,357</b>	<b>844</b>	<b>230</b>	<b>614</b>	<b>274</b>	<b>105</b>	<b>169</b>
<b>0032</b>	<b>Shargole (Urban)</b>	-	-	-	-	-	-	-	-	-
	<b>RURAL</b>									
000980	Push Kum	646	379	267	180	14	166	1	1	-
000981	Kukste	63	58	5	4	1	3	-	-	-
000982	Karit	73	71	2	1	1	-	-	-	-
000989	Tacha	74	38	36	1	1	-	-	-	-
000990	Lochum	51	39	12	5	4	1	1	1	-
000991	Darkiat	25	25	-	-	-	-	-	-	-
000992	Nunamchey	31	31	-	-	-	-	-	-	-
000993	Skambo	233	106	127	4	4	-	4	4	-
001015	Phoo	198	103	95	131	48	83	2	-	2
001016	Tingdo	87	24	63	21	19	2	-	-	-
001017	Khachey	327	129	198	151	45	106	15	5	10
001018	Karamba	307	140	167	1	1	-	114	45	69
001019	Shargol	146	54	92	111	22	89	5	5	-
001020	Malbekh	424	162	262	213	61	152	119	32	87
001021	Wakhade	128	97	31	21	9	12	13	12	1

## PRIMARY CENSUS ABSTRACT

## CENSUS ABSTRACT

## Shargole

of marginal workers

Household industry workers			Other workers			Non-workers			Name of Village	Location code number
Persons	Males	Females	Persons	Males	Females	Persons	Males	Females		
50	51	52	53	54	55	56	57	58	2	1
67	24	43	1,628	1,097	531	7,026	3,134	3,892	Shargole (Total)	0032
67	24	43	1,628	1,097	531	7,026	3,134	3,892	Shargole (Rural)	0032
-	-	-	-	-	-	-	-	-	Shargole (Urban)	0032
<b>RURAL</b>										
3	1	2	462	363	99	2,280	1,030	1,250	Push Kum	000980
2	2	-	57	55	2	261	107	154	Kukste	000981
2	2	-	70	68	2	411	154	257	Karit	000982
-	-	-	73	37	36	288	136	152	Tacha	000989
-	-	-	45	34	11	233	117	116	Lochum	000990
-	-	-	25	25	-	194	82	112	Darkiat	000991
1	1	-	30	30	-	140	45	95	Nunamchey	000992
6	5	1	219	93	126	342	173	169	Skambo	000993
-	-	-	65	55	10	337	154	183	Phoo	001015
26	1	25	40	4	36	168	95	73	Tingdo	001016
2	2	-	159	77	82	106	49	57	Khachey	001017
-	-	-	192	94	98	43	25	18	Karamba	001018
-	-	-	30	27	3	271	146	125	Shargol	001019
4	-	4	88	69	19	703	349	354	Malbekh	001020
21	10	11	73	66	7	1,249	472	777	Wakhade	001021



VILLAGE PRIMARY  
C D Block -

Location code number	Name of Village	Area of Village in hectares	Number of households	Total population (including institutional and houseless population)			Population in the age-group 0-6		
				Persons	Males	Females	Persons	Males	Females
1	2	3	4	5	6	7	8	9	10
<b>0033</b>	<b>Zanskar (Total)</b>	<b>3,514.14</b>	<b>1,991</b>	<b>11,653</b>	<b>5,858</b>	<b>5,795</b>	<b>1,641</b>	<b>846</b>	<b>795</b>
<b>0033</b>	<b>Zanskar (Rural)</b>	<b>3,514.14</b>	<b>1,991</b>	<b>11,653</b>	<b>5,858</b>	<b>5,795</b>	<b>1,641</b>	<b>846</b>	<b>795</b>
<b>0033</b>	<b>Zanskar (Urban)</b>	<b>0.00</b>	<b>-</b>	<b>-</b>	<b>-</b>	<b>-</b>	<b>-</b>	<b>-</b>	<b>-</b>
	<b>RURAL</b>								
001064	Akshow	115.30	61	332	163	169	46	22	24
001065	Abran	158.60	71	418	211	207	68	29	39
001066	Hamiling	94.29	48	266	116	150	40	20	20
001067	Remala Skyagam	135.20	116	588	271	317	88	44	44
001068	Phey	172.80	84	509	246	263	77	45	32
001069	Ating	212.10	105	605	322	283	97	51	46
001070	Rantaq Shah	91.00	57	358	178	180	60	29	31
001071	Tonrian Thagan	168.30	94	573	290	283	73	31	42
001072	Techa Khasar	124.60	45	290	149	141	39	23	16
001073	Seni	158.60	99	614	297	317	88	46	42
001074	Selapigai Pak	265.90	104	701	336	365	111	61	50
001075	Padam	342.00	261	1,538	808	730	211	113	98
001076	Upti Pipiting	239.60	168	941	473	468	112	60	52
001077	Salapi Ruruk	133.55	56	361	176	185	60	32	28
001078	Lungmi Rezing	172.40	70	478	241	237	82	44	38
001079	Karshah	322.10	189	964	496	468	135	67	68
001080	Zangla	227.80	182	954	471	483	108	58	50
001081	Tangday Kumi	256.60	138	914	477	437	113	54	59
001086	Icher	123.40	43	249	137	112	33	17	16

## PRIMARY CENSUS ABSTRACT

## CENSUS ABSTRACT

Zanskar

Scheduled Castes population			Scheduled Tribes population			Literates			Name of Village
Persons	Males	Females	Persons	Males	Females	Persons	Males	Females	
11	12	13	14	15	16	17	18	19	2
-	-	-	11,557	5,804	5,753	6,013	3,706	2,307	Zanskar (Total)
-	-	-	11,557	5,804	5,753	6,013	3,706	2,307	Zanskar (Rural)
-	-	-	-	-	-	-	-	-	Zanskar (Urban)
<b>RURAL</b>									
-	-	-	332	163	169	100	65	35	Akshow
-	-	-	417	211	206	145	89	56	Abran
-	-	-	264	114	150	133	57	76	Hamiling
-	-	-	546	253	293	249	155	94	Remala Skyagam
-	-	-	507	245	262	290	175	115	Phey
-	-	-	601	320	281	181	107	74	Ating
-	-	-	352	175	177	158	100	58	Rantaq Shah
-	-	-	570	290	280	336	212	124	Tonrian Thagan
-	-	-	289	148	141	151	92	59	Techa Khasar
-	-	-	613	296	317	323	195	128	Seni
-	-	-	701	336	365	351	198	153	Selapigai Pak
-	-	-	1,534	805	729	968	602	366	Padam
-	-	-	928	463	465	583	351	232	Upti Pipiting
-	-	-	359	175	184	208	120	88	Salapi Ruruk
-	-	-	475	239	236	208	129	79	Lungmi Rezing
-	-	-	961	493	468	554	362	192	Karshah
-	-	-	953	470	483	506	310	196	Zangla
-	-	-	911	475	436	433	293	140	Tangday Kumi
-	-	-	244	133	111	136	94	42	Icher

**VILLAGE PRIMARY  
C D Block -**

Location code number	Name of Village	Illiterates			Total workers			Main workers		
		Persons	Males	Females	Persons	Males	Females	Persons	Males	Females
1	2	20	21	22	23	24	25	26	27	28
<b>0033</b>	<b>Zanskar (Total)</b>	<b>5,640</b>	<b>2,152</b>	<b>3,488</b>	<b>5,240</b>	<b>2,890</b>	<b>2,350</b>	<b>2,113</b>	<b>1,436</b>	<b>677</b>
<b>0033</b>	<b>Zanskar (Rural)</b>	<b>5,640</b>	<b>2,152</b>	<b>3,488</b>	<b>5,240</b>	<b>2,890</b>	<b>2,350</b>	<b>2,113</b>	<b>1,436</b>	<b>677</b>
<b>0033</b>	<b>Zanskar (Urban)</b>	-	-	-	-	-	-	-	-	-
	<b>RURAL</b>									
001064	Akshow	232	98	134	252	121	131	10	7	3
001065	Abran	273	122	151	347	178	169	24	24	-
001066	Hamiling	133	59	74	130	60	70	12	10	2
001067	Remala Skyagam	339	116	223	332	178	154	25	20	5
001068	Phey	219	71	148	65	48	17	36	29	7
001069	Ating	424	215	209	188	138	50	62	57	5
001070	Rantaq Shah	200	78	122	250	123	127	162	79	83
001071	Tonrian Thagan	237	78	159	402	204	198	60	54	6
001072	Techa Khasar	139	57	82	149	75	74	65	39	26
001073	Seni	291	102	189	406	193	213	196	97	99
001074	Selapigai Pak	350	138	212	156	124	32	75	68	7
001075	Padam	570	206	364	288	244	44	249	209	40
001076	Upti Pipiting	358	122	236	306	173	133	272	156	116
001077	Salapi Ruruk	153	56	97	70	60	10	68	58	10
001078	Lungmi Rezing	270	112	158	353	176	177	97	73	24
001079	Karshah	410	134	276	581	283	298	193	129	64
001080	Zangla	448	161	287	443	227	216	231	128	103
001081	Tangday Kumi	481	184	297	416	234	182	173	150	23
001086	Icher	113	43	70	106	51	55	103	49	54

## PRIMARY CENSUS ABSTRACT

## CENSUS ABSTRACT

Zanskar

Industrial category of main workers													Name of Village 2
Cultivators			Agricultural labourers			Household industry workers			Other workers				
Persons	Males	Females	Persons	Males	Females	Persons	Males	Females	Persons	Males	Females		
29	30	31	32	33	34	35	36	37	38	39	40		
482	201	281	275	76	199	50	42	8	1,306	1,117	189	Zanskar (Total)	
482	201	281	275	76	199	50	42	8	1,306	1,117	189	Zanskar (Rural)	
-	-	-	-	-	-	-	-	-	-	-	-	Zanskar (Urban)	
<b>RURAL</b>													
-	-	-	3	-	3	-	-	-	7	7	-	Akshow	
2	2	-	-	-	-	1	1	-	21	21	-	Abran	
-	-	-	-	-	-	1	1	-	11	9	2	Hamiling	
-	-	-	-	-	-	-	-	-	25	20	5	Remala Skyagam	
2	1	1	-	-	-	-	-	-	34	28	6	Phey	
-	-	-	1	1	-	1	1	-	60	55	5	Ating	
78	47	31	57	9	48	5	4	1	22	19	3	Rantaq Shah	
-	-	-	7	7	-	3	3	-	50	44	6	Tonrian Thagan	
5	1	4	20	4	16	1	-	1	39	34	5	Techa Khasar	
113	40	73	31	14	17	4	4	-	48	39	9	Seni	
-	-	-	-	-	-	2	2	-	73	66	7	Selapigai Pak	
4	3	1	-	-	-	14	13	1	231	193	38	Padam	
9	3	6	108	26	82	5	3	2	150	124	26	Upti Pipiting	
3	3	-	-	-	-	-	-	-	65	55	10	Salapi Ruruk	
-	-	-	1	1	-	-	-	-	96	72	24	Lungmi Rezing	
61	23	38	17	3	14	8	7	1	107	96	11	Karshah	
119	45	74	23	6	17	2	1	1	87	76	11	Zangla	
-	-	-	7	5	2	3	2	1	163	143	20	Tangday Kumi	
86	33	53	-	-	-	-	-	-	17	16	1	Icher	

**VILLAGE PRIMARY  
C D Block -**

		Industrial category								
Location code number	Name of Village	Marginal workers			Cultivators			Agricultural labourers		
		Persons	Males	Females	Persons	Males	Females	Persons	Males	Females
1	2	41	42	43	44	45	46	47	48	49
<b>0033</b>	<b>Zanskar (Total)</b>	<b>3,127</b>	<b>1,454</b>	<b>1,673</b>	<b>1,266</b>	<b>608</b>	<b>658</b>	<b>1,418</b>	<b>583</b>	<b>835</b>
<b>0033</b>	<b>Zanskar (Rural)</b>	<b>3,127</b>	<b>1,454</b>	<b>1,673</b>	<b>1,266</b>	<b>608</b>	<b>658</b>	<b>1,418</b>	<b>583</b>	<b>835</b>
<b>0033</b>	<b>Zanskar (Urban)</b>	-	-	-	-	-	-	-	-	-
	<b>RURAL</b>									
001064	Akshow	242	114	128	-	-	-	178	75	103
001065	Abran	323	154	169	116	61	55	203	90	113
001066	Hamiling	118	50	68	2	1	1	110	46	64
001067	Remala Skyagam	307	158	149	139	91	48	166	66	100
001068	Phey	29	19	10	13	7	6	6	4	2
001069	Ating	126	81	45	51	51	-	63	21	42
001070	Rantaq Shah	88	44	44	35	20	15	31	13	18
001071	Tonrian Thagan	342	150	192	244	72	172	90	72	18
001072	Techa Khasar	84	36	48	41	8	33	28	16	12
001073	Seni	210	96	114	73	29	44	71	33	38
001074	Selapigai Pak	81	56	25	56	32	24	19	18	1
001075	Padam	39	35	4	15	14	1	-	-	-
001076	Upti Pipiting	34	17	17	7	2	5	12	4	8
001077	Salapi Ruruk	2	2	-	1	1	-	-	-	-
001078	Lungmi Rezing	256	103	153	175	81	94	78	20	58
001079	Karshah	388	154	234	144	59	85	178	52	126
001080	Zangla	212	99	113	129	59	70	20	10	10
001081	Tangday Kumi	243	84	159	22	18	4	165	43	122
001086	Icher	3	2	1	3	2	1	-	-	-

## PRIMARY CENSUS ABSTRACT

## CENSUS ABSTRACT

## Zanskar

of marginal workers

Household industry workers			Other workers			Non-workers			Name of Village	Location code number
Persons	Males	Females	Persons	Males	Females	Persons	Males	Females		
50	51	52	53	54	55	56	57	58	2	1
47	18	29	396	245	151	6,413	2,968	3,445	Zanskar (Total)	0033
47	18	29	396	245	151	6,413	2,968	3,445	Zanskar (Rural)	0033
-	-	-	-	-	-	-	-	-	Zanskar (Urban)	0033
<b>RURAL</b>										
1	-	1	63	39	24	80	42	38	Akshow	001064
1	-	1	3	3	-	71	33	38	Abran	001065
1	-	1	5	3	2	136	56	80	Hamiling	001066
-	-	-	2	1	1	256	93	163	Remala Skyagam	001067
1	1	-	9	7	2	444	198	246	Phey	001068
8	6	2	4	3	1	417	184	233	Ating	001069
7	3	4	15	8	7	108	55	53	Rantaq Shah	001070
1	1	-	7	5	2	171	86	85	Tonrian Thagan	001071
1	-	1	14	12	2	141	74	67	Techa Khasar	001072
6	1	5	60	33	27	208	104	104	Seni	001073
-	-	-	6	6	-	545	212	333	Selapigai Pak	001074
-	-	-	24	21	3	1,250	564	686	Padam	001075
3	1	2	12	10	2	635	300	335	Upti Pipiting	001076
-	-	-	1	1	-	291	116	175	Salapi Ruruk	001077
-	-	-	3	2	1	125	65	60	Lungmi Rezing	001078
5	4	1	61	39	22	383	213	170	Karshah	001079
12	1	11	51	29	22	511	244	267	Zangla	001080
-	-	-	56	23	33	498	243	255	Tangday Kumi	001081
-	-	-	-	-	-	143	86	57	Icher	001086

**VILLAGE PRIMARY  
C D Block -**

Location code number	Name of Village	Area of Village in hectares	Number of households	Total population (including institutional and houseless population)			Population in the age-group 0-6		
				Persons	Males	Females	Persons	Males	Females
1	2	3	4	5	6	7	8	9	10
<b>0034</b>	<b>Lungnak (Total)</b>	<b>796.87</b>	<b>336</b>	<b>2,140</b>	<b>1,150</b>	<b>990</b>	<b>267</b>	<b>134</b>	<b>133</b>
<b>0034</b>	<b>Lungnak (Rural)</b>	<b>796.87</b>	<b>336</b>	<b>2,140</b>	<b>1,150</b>	<b>990</b>	<b>267</b>	<b>134</b>	<b>133</b>
<b>0034</b>	<b>Lungnak (Urban)</b>	<b>0.00</b>	<b>-</b>	<b>-</b>	<b>-</b>	<b>-</b>	<b>-</b>	<b>-</b>	<b>-</b>
	<b>RURAL</b>								
001082	Pipcha	100.77	36	213	129	84	29	12	17
001083	Shan Shaday	78.90	34	244	120	124	40	21	19
001084	Ruru Moony	186.20	60	329	169	160	31	14	17
001085	Chah	83.80	61	465	278	187	45	26	19
001087	Testa	170.80	71	460	237	223	60	27	33
001088	Kargyak	176.40	74	429	217	212	62	34	28

## PRIMARY CENSUS ABSTRACT

## CENSUS ABSTRACT

Lungnak

Scheduled Castes population			Scheduled Tribes population			Literates			Name of Village
Persons	Males	Females	Persons	Males	Females	Persons	Males	Females	
11	12	13	14	15	16	17	18	19	2
-	-	-	<b>2,120</b>	<b>1,137</b>	<b>983</b>	<b>1,086</b>	<b>739</b>	<b>347</b>	<b>Lungnak (Total)</b>
-	-	-	<b>2,120</b>	<b>1,137</b>	<b>983</b>	<b>1,086</b>	<b>739</b>	<b>347</b>	<b>Lungnak (Rural)</b>
-	-	-	-	-	-	-	-	-	<b>Lungnak (Urban)</b>
<b>RURAL</b>									
-	-	-	213	129	84	137	105	32	Pipcha
-	-	-	244	120	124	104	69	35	Shan Shaday
-	-	-	328	168	160	168	107	61	Ruru Moony
-	-	-	463	276	187	261	193	68	Chah
-	-	-	448	231	217	242	152	90	Testa
-	-	-	424	213	211	174	113	61	Kargyak



**VILLAGE PRIMARY  
C D Block -**

Location code number	Name of Village	Illiterates			Total workers			Main workers		
		Persons	Males	Females	Persons	Males	Females	Persons	Males	Females
1	2	20	21	22	23	24	25	26	27	28
<b>0034</b>	<b>Lungnak (Total)</b>	<b>1,054</b>	<b>411</b>	<b>643</b>	<b>1,136</b>	<b>593</b>	<b>543</b>	<b>446</b>	<b>221</b>	<b>225</b>
<b>0034</b>	<b>Lungnak (Rural)</b>	<b>1,054</b>	<b>411</b>	<b>643</b>	<b>1,136</b>	<b>593</b>	<b>543</b>	<b>446</b>	<b>221</b>	<b>225</b>
<b>0034</b>	<b>Lungnak (Urban)</b>	-	-	-	-	-	-	-	-	-
	<b>RURAL</b>									
001082	Pipcha	76	24	52	166	110	56	12	12	-
001083	Shan Shaday	140	51	89	45	32	13	11	10	1
001084	Ruru Moony	161	62	99	211	107	104	23	19	4
001085	Chah	204	85	119	181	81	100	179	79	100
001087	Testa	218	85	133	341	181	160	38	27	11
001088	Kargyak	255	104	151	192	82	110	183	74	109

## PRIMARY CENSUS ABSTRACT

## CENSUS ABSTRACT

## Lungnak

Industrial category of main workers													Name of Village
Cultivators			Agricultural labourers			Household industry workers			Other workers				
Persons	Males	Females	Persons	Males	Females	Persons	Males	Females	Persons	Males	Females		
29	30	31	32	33	34	35	36	37	38	39	40	2	
340	137	203	-	-	-	4	2	2	102	82	20	Lungnak (Total)	
340	137	203	-	-	-	4	2	2	102	82	20	Lungnak (Rural)	
-	-	-	-	-	-	-	-	-	-	-	-	Lungnak (Urban)	
<b>RURAL</b>													
-	-	-	-	-	-	-	-	-	12	12	-	Pipcha	
-	-	-	-	-	-	-	-	-	11	10	1	Shan Shaday	
-	-	-	-	-	-	-	-	-	23	19	4	Ruru Moony	
156	64	92	-	-	-	2	1	1	21	14	7	Chah	
16	9	7	-	-	-	2	1	1	20	17	3	Testa	
168	64	104	-	-	-	-	-	-	15	10	5	Kargyak	

**VILLAGE PRIMARY  
C D Block -**

Location code number	Name of Village	Industrial category								
		Marginal workers			Cultivators			Agricultural labourers		
		Persons	Males	Females	Persons	Males	Females	Persons	Males	Females
1	2	41	42	43	44	45	46	47	48	49
<b>0034</b>	<b>Lungnak (Total)</b>	<b>690</b>	<b>372</b>	<b>318</b>	<b>396</b>	<b>201</b>	<b>195</b>	<b>170</b>	<b>60</b>	<b>110</b>
<b>0034</b>	<b>Lungnak (Rural)</b>	<b>690</b>	<b>372</b>	<b>318</b>	<b>396</b>	<b>201</b>	<b>195</b>	<b>170</b>	<b>60</b>	<b>110</b>
<b>0034</b>	<b>Lungnak (Urban)</b>	-	-	-	-	-	-	-	-	-
	<b>RURAL</b>									
001082	Pipcha	154	98	56	58	38	20	48	13	35
001083	Shan Shaday	34	22	12	17	11	6	1	-	1
001084	Ruru Moony	188	88	100	116	45	71	33	8	25
001085	Chah	2	2	-	2	2	-	-	-	-
001087	Testa	303	154	149	202	104	98	88	39	49
001088	Kargyak	9	8	1	1	1	-	-	-	-

## PRIMARY CENSUS ABSTRACT

## CENSUS ABSTRACT

## Lungnak

of marginal workers

Household industry workers			Other workers			Non-workers			Name of Village	Location code number
Persons	Males	Females	Persons	Males	Females	Persons	Males	Females		
50	51	52	53	54	55	56	57	58	2	1
4	4	-	120	107	13	1,004	557	447	Lungnak (Total)	0034
4	4	-	120	107	13	1,004	557	447	Lungnak (Rural)	0034
-	-	-	-	-	-	-	-	-	Lungnak (Urban)	0034
<b>RURAL</b>										
-	-	-	48	47	1	47	19	28	Pipcha	001082
-	-	-	16	11	5	199	88	111	Shan Shaday	001083
3	3	-	36	32	4	118	62	56	Ruru Moony	001084
-	-	-	-	-	-	284	197	87	Chah	001085
1	1	-	12	10	2	119	56	63	Testa	001087
-	-	-	8	7	1	237	135	102	Kargyak	001088

VILLAGE PRIMARY  
C D Block -

Location code number	Name of Village	Area of Village in hectares	Number of households	Total population (including institutional and houseless population)			Population in the age-group 0-6		
				Persons	Males	Females	Persons	Males	Females
1	2	3	4	5	6	7	8	9	10
<b>0035</b>	<b>Sankoo (Total)</b>	<b>2,885.94</b>	<b>2,340</b>	<b>17,735</b>	<b>9,063</b>	<b>8,672</b>	<b>2,685</b>	<b>1,366</b>	<b>1,319</b>
<b>0035</b>	<b>Sankoo (Rural)</b>	<b>2,885.94</b>	<b>2,340</b>	<b>17,735</b>	<b>9,063</b>	<b>8,672</b>	<b>2,685</b>	<b>1,366</b>	<b>1,319</b>
<b>0035</b>	<b>Sankoo (Urban)</b>	<b>0.00</b>	<b>-</b>	<b>-</b>	<b>-</b>	<b>-</b>	<b>-</b>	<b>-</b>	<b>-</b>
<b>RURAL</b>									
001032	Thasgam Thaine	490.10	323	2,567	1,289	1,278	414	206	208
001034	Farona	167.10	122	893	471	422	127	67	60
001035	Lankarchey	358.76	321	2,425	1,222	1,203	370	184	186
001036	Umba	201.53	124	844	428	416	134	70	64
001037	Nagmakusar	109.70	162	1,126	608	518	161	92	69
001038	Thang Dumbur	448.00	349	2,698	1,382	1,316	425	219	206
001039	Sangra	197.50	169	1,183	608	575	146	72	74
001040	Stakpa	149.70	126	878	454	424	129	77	52
001042	KarcheY Khar	166.30	115	942	487	455	165	92	73
001043	Barsoo	168.00	181	1,602	836	766	222	128	94
001044	Barto	128.70	98	679	338	341	130	55	75
001045	Shergandi	51.80	33	283	134	149	35	17	18
001046	Itchoo	18.20	20	159	76	83	33	12	21
001047	Khandi	230.55	197	1,456	730	726	194	75	119

## PRIMARY CENSUS ABSTRACT

## CENSUS ABSTRACT

Sankoo

Scheduled Castes population			Scheduled Tribes population			Literates			Name of Village
Persons	Males	Females	Persons	Males	Females	Persons	Males	Females	
11	12	13	14	15	16	17	18	19	2
-	-	-	17,110	8,729	8,381	9,522	5,712	3,810	Sankoo (Total)
-	-	-	17,110	8,729	8,381	9,522	5,712	3,810	Sankoo (Rural)
-	-	-	-	-	-	-	-	-	Sankoo (Urban)
<b>RURAL</b>									
-	-	-	2,385	1,192	1,193	1,337	766	571	Thasgam Thaine
-	-	-	888	468	420	475	317	158	Farona
-	-	-	2,245	1,124	1,121	1,198	749	449	Lankarchey
-	-	-	807	410	397	472	268	204	Umba
-	-	-	1,118	602	516	672	447	225	Nagmakusar
-	-	-	2,579	1,321	1,258	1,502	912	590	Thang Dumbur
-	-	-	1,159	594	565	685	403	282	Sangra
-	-	-	852	440	412	429	271	158	Stakpa
-	-	-	939	486	453	447	259	188	KarcheY Khar
-	-	-	1,589	826	763	909	530	379	Barsoo
-	-	-	663	332	331	339	195	144	Barto
-	-	-	281	134	147	152	77	75	Shergandi
-	-	-	158	76	82	69	43	26	Itchoo
-	-	-	1,447	724	723	836	475	361	Khandi

**VILLAGE PRIMARY  
C D Block -**

Location code number	Name of Village	Illiterates			Total workers			Main workers		
		Persons	Males	Females	Persons	Males	Females	Persons	Males	Females
1	2	20	21	22	23	24	25	26	27	28
<b>0035</b>	<b>Sankoo (Total)</b>	<b>8,213</b>	<b>3,351</b>	<b>4,862</b>	<b>5,216</b>	<b>3,925</b>	<b>1,291</b>	<b>1,666</b>	<b>1,339</b>	<b>327</b>
<b>0035</b>	<b>Sankoo (Rural)</b>	<b>8,213</b>	<b>3,351</b>	<b>4,862</b>	<b>5,216</b>	<b>3,925</b>	<b>1,291</b>	<b>1,666</b>	<b>1,339</b>	<b>327</b>
<b>0035</b>	<b>Sankoo (Urban)</b>	-	-	-	-	-	-	-	-	-
<b>RURAL</b>										
001032	Thasgam Thaine	1,230	523	707	693	557	136	157	130	27
001034	Farona	418	154	264	222	200	22	79	69	10
001035	Lankarchey	1,227	473	754	856	519	337	237	156	81
001036	Umba	372	160	212	218	194	24	71	58	13
001037	Nagmakusar	454	161	293	333	262	71	136	118	18
001038	Thang Dumbur	1,196	470	726	691	594	97	372	286	86
001039	Sangra	498	205	293	510	337	173	89	65	24
001040	Stakpa	449	183	266	219	187	32	103	92	11
001042	KarcheY Khar	495	228	267	308	200	108	52	40	12
001043	Barsoo	693	306	387	481	354	127	225	203	22
001044	Barto	340	143	197	141	125	16	24	20	4
001045	Shergandi	131	57	74	55	52	3	13	11	2
001046	Itchoo	90	33	57	36	33	3	6	5	1
001047	Khandi	620	255	365	453	311	142	102	86	16

## PRIMARY CENSUS ABSTRACT

## CENSUS ABSTRACT

Sankoo

## Industrial category of main workers

Cultivators			Agricultural labourers			Household industry workers			Other workers			Name of Village
Persons	Males	Females	Persons	Males	Females	Persons	Males	Females	Persons	Males	Females	
29	30	31	32	33	34	35	36	37	38	39	40	2
158	100	58	26	21	5	67	59	8	1,415	1,159	256	<b>Sankoo (Total)</b>
158	100	58	26	21	5	67	59	8	1,415	1,159	256	<b>Sankoo (Rural)</b>
-	-	-	-	-	-	-	-	-	-	-	-	<b>Sankoo (Urban)</b>
<b>RURAL</b>												
2	2	-	1	1	-	7	6	1	147	121	26	Thasgam Thaine
-	-	-	1	1	-	-	-	-	78	68	10	Farona
4	3	1	4	2	2	1	1	-	228	150	78	Lankarchey
-	-	-	-	-	-	-	-	-	71	58	13	Umba
-	-	-	1	1	-	-	-	-	135	117	18	Nagmakusar
35	3	32	5	3	2	40	34	6	292	246	46	Thang Dumbur
12	8	4	4	3	1	4	3	1	69	51	18	Sangra
11	6	5	1	1	-	3	3	-	88	82	6	Stakpa
5	4	1	-	-	-	-	-	-	47	36	11	KarcheY Khar
83	70	13	8	8	-	11	11	-	123	114	9	Barsoo
2	-	2	1	1	-	-	-	-	21	19	2	Barto
-	-	-	-	-	-	-	-	-	13	11	2	Shergandi
-	-	-	-	-	-	-	-	-	6	5	1	Itchoo
4	4	-	-	-	-	1	1	-	97	81	16	Khandi



**VILLAGE PRIMARY  
C D Block -**

Location code number	Name of Village	Industrial category								
		Marginal workers			Cultivators			Agricultural labourers		
		Persons	Males	Females	Persons	Males	Females	Persons	Males	Females
1	2	41	42	43	44	45	46	47	48	49
<b>0035</b>	<b>Sankoo (Total)</b>	<b>3,550</b>	<b>2,586</b>	<b>964</b>	<b>479</b>	<b>307</b>	<b>172</b>	<b>194</b>	<b>169</b>	<b>25</b>
<b>0035</b>	<b>Sankoo (Rural)</b>	<b>3,550</b>	<b>2,586</b>	<b>964</b>	<b>479</b>	<b>307</b>	<b>172</b>	<b>194</b>	<b>169</b>	<b>25</b>
<b>0035</b>	<b>Sankoo (Urban)</b>	-	-	-	-	-	-	-	-	-
	<b>RURAL</b>									
001032	Thasgam Thaine	536	427	109	237	141	96	35	31	4
001034	Farona	143	131	12	5	1	4	-	-	-
001035	Lankarchey	619	363	256	15	14	1	7	6	1
001036	Umba	147	136	11	10	6	4	-	-	-
001037	Nagmakusar	197	144	53	59	14	45	65	64	1
001038	Thang Dumbur	319	308	11	9	6	3	4	3	1
001039	Sangra	421	272	149	14	9	5	11	5	6
001040	Stakpa	116	95	21	8	7	1	6	5	1
001042	KarcheY Khar	256	160	96	25	22	3	1	1	-
001043	Barsoo	256	151	105	4	4	-	7	6	1
001044	Barto	117	105	12	44	44	-	50	41	9
001045	Shergandi	42	41	1	3	3	-	3	2	1
001046	Itchoo	30	28	2	4	4	-	-	-	-
001047	Khandi	351	225	126	42	32	10	5	5	-

## PRIMARY CENSUS ABSTRACT

## CENSUS ABSTRACT

## Sankoo

of marginal workers

Household industry workers			Other workers			Non-workers			Name of Village	Location code number
Persons	Males	Females	Persons	Males	Females	Persons	Males	Females		
50	51	52	53	54	55	56	57	58	2	1
104	57	47	2,773	2,053	720	12,519	5,138	7,381	Sankoo (Total)	0035
104	57	47	2,773	2,053	720	12,519	5,138	7,381	Sankoo (Rural)	0035
-	-	-	-	-	-	-	-	-	Sankoo (Urban)	0035
<b>RURAL</b>										
7	6	1	257	249	8	1,874	732	1,142	Thasgam Thaine	001032
1	1	-	137	129	8	671	271	400	Farona	001034
9	5	4	588	338	250	1,569	703	866	Lankarchey	001035
-	-	-	137	130	7	626	234	392	Umba	001036
-	-	-	73	66	7	793	346	447	Nagmakusar	001037
9	8	1	297	291	6	2,007	788	1,219	Thang Dumbur	001038
67	29	38	329	229	100	673	271	402	Sangra	001039
1	-	1	101	83	18	659	267	392	Stakpa	001040
1	1	-	229	136	93	634	287	347	KarcheY Khar	001042
1	1	-	244	140	104	1,121	482	639	Barsoo	001043
3	3	-	20	17	3	538	213	325	Barto	001044
-	-	-	36	36	-	228	82	146	Shergandi	001045
-	-	-	26	24	2	123	43	80	Itchoo	001046
5	3	2	299	185	114	1,003	419	584	Khandi	001047

VILLAGE PRIMARY  
C D Block -

Location code number	Name of Village	Area of Village in hectares	Number of households	Total population (including institutional and houseless population)			Population in the age-group 0-6		
				Persons	Males	Females	Persons	Males	Females
1	2	3	4	5	6	7	8	9	10
<b>0036</b>	<b>Taifsuru (Total)</b>	<b>2,056.40</b>	<b>1,322</b>	<b>10,059</b>	<b>5,170</b>	<b>4,889</b>	<b>1,723</b>	<b>862</b>	<b>861</b>
<b>0036</b>	<b>Taifsuru (Rural)</b>	<b>2,056.40</b>	<b>1,322</b>	<b>10,059</b>	<b>5,170</b>	<b>4,889</b>	<b>1,723</b>	<b>862</b>	<b>861</b>
<b>0036</b>	<b>Taifsuru (Urban)</b>	<b>0.00</b>	<b>-</b>	<b>-</b>	<b>-</b>	<b>-</b>	<b>-</b>	<b>-</b>	<b>-</b>
<b>RURAL</b>									
001041	Karpo Khar	15.00	17	133	67	66	19	7	12
001048	Gyaling	50.60	37	271	141	130	48	22	26
001049	Purtikchy	271.50	133	963	472	491	166	82	84
001050	Khows	116.50	95	756	397	359	142	79	63
001051	Yuljuk	282.10	161	1,196	604	592	191	87	104
001052	Kargi	68.40	83	566	295	271	85	38	47
001053	Pranti	60.30	81	518	262	256	79	43	36
001054	Namsuru	130.70	108	905	460	445	176	75	101
001055	Panikhar	70.40	43	325	165	160	31	18	13
001056	Chosker Suru	73.30	51	431	216	215	65	35	30
001057	Thuls Pursa	118.60	51	420	210	210	77	37	40
001058	Tai Suru	59.10	72	589	307	282	98	56	42
001059	Achambur	65.60	64	470	246	224	65	37	28
001060	Tangol	136.80	95	694	353	341	132	57	75
001061	Kochik	50.20	41	316	178	138	57	30	27
001062	Parkachik	197.50	137	1,138	606	532	234	133	101
001063	Rangdum	289.80	53	368	191	177	58	26	32

## PRIMARY CENSUS ABSTRACT

## CENSUS ABSTRACT

Taifsuru

Scheduled Castes population			Scheduled Tribes population			Literates			Name of Village
Persons	Males	Females	Persons	Males	Females	Persons	Males	Females	
11	12	13	14	15	16	17	18	19	2
-	-	-	8,209	4,196	4,013	5,166	3,138	2,028	Taifsuru (Total)
-	-	-	8,209	4,196	4,013	5,166	3,138	2,028	Taifsuru (Rural)
-	-	-	-	-	-	-	-	-	Taifsuru (Urban)
<b>RURAL</b>									
-	-	-	133	67	66	68	42	26	Karpo Khar
-	-	-	233	120	113	140	89	51	Gyaling
-	-	-	957	470	487	427	243	184	Purtikchy
-	-	-	633	330	303	385	249	136	Khows
-	-	-	969	493	476	643	395	248	Yuljuk
-	-	-	463	244	219	324	214	110	Kargi
-	-	-	517	261	256	366	203	163	Pranti
-	-	-	893	453	440	355	237	118	Namsuru
-	-	-	318	160	158	244	138	106	Panikhar
-	-	-	9	4	5	238	133	105	Chosker Suru
-	-	-	414	207	207	244	140	104	Thuls Pursa
-	-	-	568	295	273	354	203	151	Tai Suru
-	-	-	463	241	222	262	162	100	Achambur
-	-	-	689	352	337	337	212	125	Tangol
-	-	-	163	91	72	166	111	55	Kochik
-	-	-	419	217	202	484	298	186	Parkachik
-	-	-	368	191	177	129	69	60	Rangdum

**VILLAGE PRIMARY  
C D Block -**

Location code number	Name of Village	Illiterates			Total workers			Main workers		
		Persons	Males	Females	Persons	Males	Females	Persons	Males	Females
1	2	20	21	22	23	24	25	26	27	28
<b>0036</b>	<b>Taifsuru (Total)</b>	<b>4,893</b>	<b>2,032</b>	<b>2,861</b>	<b>3,126</b>	<b>2,159</b>	<b>967</b>	<b>896</b>	<b>729</b>	<b>167</b>
<b>0036</b>	<b>Taifsuru (Rural)</b>	<b>4,893</b>	<b>2,032</b>	<b>2,861</b>	<b>3,126</b>	<b>2,159</b>	<b>967</b>	<b>896</b>	<b>729</b>	<b>167</b>
<b>0036</b>	<b>Taifsuru (Urban)</b>	-	-	-	-	-	-	-	-	-
<b>RURAL</b>										
001041	Karpo Khar	65	25	40	36	32	4	13	9	4
001048	Gyaling	131	52	79	59	56	3	11	9	2
001049	Purtikchy	536	229	307	207	177	30	40	34	6
001050	Khows	371	148	223	319	181	138	28	23	5
001051	Yuljuk	553	209	344	263	247	16	81	69	12
001052	Kargi	242	81	161	179	141	38	59	49	10
001053	Pranti	152	59	93	233	126	107	141	103	38
001054	Namsuru	550	223	327	239	188	51	74	68	6
001055	Panikhar	81	27	54	98	70	28	93	65	28
001056	Chosker Suru	193	83	110	100	98	2	36	35	1
001057	Thuls Pursa	176	70	106	191	101	90	37	29	8
001058	Tai Suru	235	104	131	111	94	17	89	74	15
001059	Achambur	208	84	124	98	95	3	43	42	1
001060	Tangol	357	141	216	253	161	92	46	34	12
001061	Kochik	150	67	83	106	55	51	17	14	3
001062	Parkachik	654	308	346	486	263	223	68	56	12
001063	Rangdum	239	122	117	148	74	74	20	16	4

## PRIMARY CENSUS ABSTRACT

## CENSUS ABSTRACT

Taifsuru

Industrial category of main workers													Name of Village 2
Cultivators			Agricultural labourers			Household industry workers			Other workers				
Persons	Males	Females	Persons	Males	Females	Persons	Males	Females	Persons	Males	Females		
29	30	31	32	33	34	35	36	37	38	39	40		
16	9	7	9	6	3	9	8	1	862	706	156	Taifsuru (Total)	
16	9	7	9	6	3	9	8	1	862	706	156	Taifsuru (Rural)	
-	-	-	-	-	-	-	-	-	-	-	-	Taifsuru (Urban)	
<b>RURAL</b>													
-	-	-	-	-	-	-	-	-	13	9	4	Karpo Khar	
1	-	1	-	-	-	-	-	-	10	9	1	Gyaling	
3	2	1	-	-	-	-	-	-	37	32	5	Purtikchy	
1	1	-	1	1	-	-	-	-	26	21	5	Khows	
1	-	1	-	-	-	-	-	-	80	69	11	Yuljuk	
2	1	1	1	-	1	-	-	-	56	48	8	Kargi	
-	-	-	-	-	-	1	1	-	140	102	38	Pranti	
1	-	1	1	-	1	3	2	1	69	66	3	Namsuru	
-	-	-	-	-	-	-	-	-	93	65	28	Panikhar	
-	-	-	1	1	-	-	-	-	35	34	1	Chosker Suru	
-	-	-	-	-	-	1	1	-	36	28	8	Thuls Pursa	
5	3	2	-	-	-	1	1	-	83	70	13	Tai Suru	
-	-	-	-	-	-	-	-	-	43	42	1	Achambur	
-	-	-	-	-	-	-	-	-	46	34	12	Tangol	
-	-	-	4	3	1	-	-	-	13	11	2	Kochik	
-	-	-	-	-	-	3	3	-	65	53	12	Parkachik	
2	2	-	1	1	-	-	-	-	17	13	4	Rangdum	

**VILLAGE PRIMARY  
C D Block -**

Location code number	Name of Village	Industrial category								
		Marginal workers			Cultivators			Agricultural labourers		
		Persons	Males	Females	Persons	Males	Females	Persons	Males	Females
1	2	41	42	43	44	45	46	47	48	49
<b>0036</b>	<b>Taifsuru (Total)</b>	<b>2,230</b>	<b>1,430</b>	<b>800</b>	<b>406</b>	<b>290</b>	<b>116</b>	<b>328</b>	<b>143</b>	<b>185</b>
<b>0036</b>	<b>Taifsuru (Rural)</b>	<b>2,230</b>	<b>1,430</b>	<b>800</b>	<b>406</b>	<b>290</b>	<b>116</b>	<b>328</b>	<b>143</b>	<b>185</b>
<b>0036</b>	<b>Taifsuru (Urban)</b>	-	-	-	-	-	-	-	-	-
	<b>RURAL</b>									
001041	Karpo Khar	23	23	-	7	7	-	-	-	-
001048	Gyaling	48	47	1	1	1	-	-	-	-
001049	Purtikchy	167	143	24	1	-	1	-	-	-
001050	Khows	291	158	133	4	3	1	108	35	73
001051	Yuljuk	182	178	4	1	-	1	-	-	-
001052	Kargi	120	92	28	55	31	24	2	1	1
001053	Pranti	92	23	69	10	1	9	2	1	1
001054	Namsuru	165	120	45	4	1	3	14	8	6
001055	Panikhar	5	5	-	-	-	-	-	-	-
001056	Chosker Suru	64	63	1	1	1	-	-	-	-
001057	Thuls Pursa	154	72	82	39	17	22	5	1	4
001058	Tai Suru	22	20	2	2	2	-	7	7	-
001059	Achambur	55	53	2	-	-	-	-	-	-
001060	Tangol	207	127	80	44	41	3	2	2	-
001061	Kochik	89	41	48	-	-	-	39	33	6
001062	Parkachik	418	207	211	177	132	45	149	55	94
001063	Rangdum	128	58	70	60	53	7	-	-	-

## PRIMARY CENSUS ABSTRACT

## CENSUS ABSTRACT

## Taifsuru

of marginal workers

Household industry workers			Other workers			Non-workers			Name of Village	Location code number
Persons	Males	Females	Persons	Males	Females	Persons	Males	Females		
50	51	52	53	54	55	56	57	58	2	1
80	13	67	1,416	984	432	6,933	3,011	3,922	Taifsuru (Total)	0036
80	13	67	1,416	984	432	6,933	3,011	3,922	Taifsuru (Rural)	0036
-	-	-	-	-	-	-	-	-	Taifsuru (Urban)	0036
<b>RURAL</b>										
-	-	-	16	16	-	97	35	62	Karpo Khar	001041
-	-	-	47	46	1	212	85	127	Gyaling	001048
1	1	-	165	142	23	756	295	461	Purtikchy	001049
2	1	1	177	119	58	437	216	221	Khows	001050
1	1	-	180	177	3	933	357	576	Yuljuk	001051
-	-	-	63	60	3	387	154	233	Kargi	001052
5	-	5	75	21	54	285	136	149	Pranti	001053
14	1	13	133	110	23	666	272	394	Namsuru	001054
-	-	-	5	5	-	227	95	132	Panikhar	001055
-	-	-	63	62	1	331	118	213	Chosker Suru	001056
6	1	5	104	53	51	229	109	120	Thuls Pursa	001057
1	-	1	12	11	1	478	213	265	Tai Suru	001058
-	-	-	55	53	2	372	151	221	Achambur	001059
-	-	-	161	84	77	441	192	249	Tangol	001060
45	5	40	5	3	2	210	123	87	Kochik	001061
5	3	2	87	17	70	652	343	309	Parkachik	001062
-	-	-	68	5	63	220	117	103	Rangdum	001063



**VILLAGE PRIMARY  
C D Block -**

Location code number	Name of Village	Area of Village in hectares	Number of households	Total population (including institutional and houseless population)			Population in the age-group 0-6		
				Persons	Males	Females	Persons	Males	Females
1	2	3	4	5	6	7	8	9	10
<b>0037</b>	<b>Gundmagalpur Trespore (Total)</b>	<b>1,106.90</b>	<b>1,482</b>	<b>12,754</b>	<b>7,113</b>	<b>5,641</b>	<b>1,935</b>	<b>975</b>	<b>960</b>
<b>0037</b>	<b>Gundmagalpur Trespore (Rural)</b>	<b>1,106.90</b>	<b>1,482</b>	<b>12,754</b>	<b>7,113</b>	<b>5,641</b>	<b>1,935</b>	<b>975</b>	<b>960</b>
<b>0037</b>	<b>Gundmagalpur Trespore (Urban)</b>	<b>0.00</b>	<b>-</b>	<b>-</b>	<b>-</b>	<b>-</b>	<b>-</b>	<b>-</b>	<b>-</b>
<b>RURAL</b>									
001028	Tres Pone	261.90	419	3,332	1,720	1,612	573	306	267
001029	Saleskot	272.80	336	3,605	2,443	1,162	370	199	171
001030	Kanor	127.50	174	1,481	771	710	248	132	116
001031	Tambis	248.80	296	2,442	1,231	1,211	381	164	217
001033	Gund Mangl Pur	195.90	257	1,894	948	946	363	174	189

## PRIMARY CENSUS ABSTRACT

**CENSUS ABSTRACT**

Gundmagalpur Trespore

Scheduled Castes population			Scheduled Tribes population			Literates			Name of Village
Persons	Males	Females	Persons	Males	Females	Persons	Males	Females	
11	12	13	14	15	16	17	18	19	2
-	-	-	11,156	5,732	5,424	7,198	4,869	2,329	Gundmagalpur Trespore (Total)
-	-	-	11,156	5,732	5,424	7,198	4,869	2,329	Gundmagalpur Trespore (Rural)
-	-	-	-	-	-	-	-	-	Gundmagalpur Trespore (Urban)
-	-	-	-	-	-	-	-	-	<b>RURAL</b>
-	-	-	3,239	1,672	1,567	1,642	996	646	Tres Pone
-	-	-	2,355	1,244	1,111	2,542	2,027	515	Saleskot
-	-	-	1,369	716	653	872	514	358	Kanor
-	-	-	2,432	1,227	1,205	1,216	769	447	Tambis
-	-	-	1,761	873	888	926	563	363	Gund Mangl Pur

**VILLAGE PRIMARY  
C D Block -**

Location code number	Name of Village	Illiterates			Total workers			Main workers		
		Persons	Males	Females	Persons	Males	Females	Persons	Males	Females
1	2	20	21	22	23	24	25	26	27	28
<b>0037</b>	<b>Gundmagalpur Trespore (Total)</b>	<b>5,556</b>	<b>2,244</b>	<b>3,312</b>	<b>3,993</b>	<b>3,594</b>	<b>399</b>	<b>2,013</b>	<b>1,860</b>	<b>153</b>
<b>0037</b>	<b>Gundmagalpur Trespore (Rural)</b>	<b>5,556</b>	<b>2,244</b>	<b>3,312</b>	<b>3,993</b>	<b>3,594</b>	<b>399</b>	<b>2,013</b>	<b>1,860</b>	<b>153</b>
<b>0037</b>	<b>Gundmagalpur Trespore (Urban)</b>	-	-	-	-	-	-	-	-	-
	<b>RURAL</b>									
001028	Tres Pone	1,690	724	966	804	736	68	237	208	29
001029	Saleskot	1,063	416	647	1,694	1,621	73	1,367	1,318	49
001030	Kanor	609	257	352	431	344	87	140	117	23
001031	Tambis	1,226	462	764	591	506	85	152	128	24
001033	Gund Mangl Pur	968	385	583	473	387	86	117	89	28

## PRIMARY CENSUS ABSTRACT

**CENSUS ABSTRACT**  
**Gundmagalpur Trespore**

## Industrial category of main workers

Cultivators			Agricultural labourers			Household industry workers			Other workers			Name of Village
Persons	Males	Females	Persons	Males	Females	Persons	Males	Females	Persons	Males	Females	
29	30	31	32	33	34	35	36	37	38	39	40	2
27	20	7	6	4	2	13	10	3	1,967	1,826	141	Gundmagalpur Trespore (Total)
27	20	7	6	4	2	13	10	3	1,967	1,826	141	Gundmagalpur Trespore (Rural)
-	-	-	-	-	-	-	-	-	-	-	-	Gundmagalpur Trespore (Urban)
<b>RURAL</b>												
3	-	3	5	3	2	1	-	1	228	205	23	Tres Pone
16	15	1	1	1	-	3	3	-	1,347	1,299	48	Saleskot
3	3	-	-	-	-	6	4	2	131	110	21	Kanor
3	1	2	-	-	-	1	1	-	148	126	22	Tambis
2	1	1	-	-	-	2	2	-	113	86	27	Gund Mangl Pur

**VILLAGE PRIMARY  
C D Block -**

Location code number	Name of Village	Industrial category								
		Marginal workers			Cultivators			Agricultural labourers		
		Persons	Males	Females	Persons	Males	Females	Persons	Males	Females
1	2	41	42	43	44	45	46	47	48	49
<b>0037</b>	<b>Gundmagalpur Trespore (Total)</b>	<b>1,980</b>	<b>1,734</b>	<b>246</b>	<b>426</b>	<b>346</b>	<b>80</b>	<b>208</b>	<b>160</b>	<b>48</b>
<b>0037</b>	<b>Gundmagalpur Trespore (Rural)</b>	<b>1,980</b>	<b>1,734</b>	<b>246</b>	<b>426</b>	<b>346</b>	<b>80</b>	<b>208</b>	<b>160</b>	<b>48</b>
<b>0037</b>	<b>Gundmagalpur Trespore (Urban)</b>	-	-	-	-	-	-	-	-	-
	<b>RURAL</b>									
001028	Tres Pone	567	528	39	164	156	8	12	12	-
001029	Saleskot	327	303	24	13	9	4	31	29	2
001030	Kanor	291	227	64	66	61	5	49	28	21
001031	Tambis	439	378	61	79	53	26	15	7	8
001033	Gund Mangl Pur	356	298	58	104	67	37	101	84	17

## PRIMARY CENSUS ABSTRACT

**CENSUS ABSTRACT**  
**Gundmagalpur Trespore**

of marginal workers

Household industry workers			Other workers			Non-workers			Name of Village	Location code number	
Persons	Males	Females	Persons	Males	Females	Persons	Males	Females			
50	51	52	53	54	55	56	57	58	2	1	
										<b>Gundmagalpur</b>	
<b>57</b>	<b>22</b>	<b>35</b>	<b>1,289</b>	<b>1,206</b>	<b>83</b>	<b>8,761</b>	<b>3,519</b>	<b>5,242</b>		<b>Trespore (Total)</b>	<b>0037</b>
										<b>Gundmagalpur</b>	
<b>57</b>	<b>22</b>	<b>35</b>	<b>1,289</b>	<b>1,206</b>	<b>83</b>	<b>8,761</b>	<b>3,519</b>	<b>5,242</b>		<b>Trespore (Rural)</b>	<b>0037</b>
										<b>Gundmagalpur</b>	
-	-	-	-	-	-	-	-	-		<b>Trespore (Urban)</b>	<b>0037</b>
										<b>RURAL</b>	
5	5	-	386	355	31	2,528	984	1,544		Tres Pone	001028
-	-	-	283	265	18	1,911	822	1,089		Saleskot	001029
37	15	22	139	123	16	1,050	427	623		Kanor	001030
15	2	13	330	316	14	1,851	725	1,126		Tambis	001031
-	-	-	151	147	4	1,421	561	860		Gund Mangl Pur	001033



**Urban PCA-Town wise  
Primary Census Abstract**



## URBAN PRIMARY

Location code number	Area in Square Kilometr e	Number of households	Total population (including institutional and houseless population)			Population in the age-group 0-6			
			Persons	Males	Females	Persons	Males	Females	
1	2	3	4	5	6	7	8	9	10
<b>800048</b>	<b>Kargil (MC)</b>	<b>2.14</b>	<b>2,191</b>	<b>16,338</b>	<b>10,082</b>	<b>6,256</b>	<b>1,569</b>	<b>788</b>	<b>781</b>
0001	Ward No. 1		227	1,017	556	461	120	66	54
0002	Ward No. 2		198	999	583	416	151	85	66
0003	Ward No. 3		26	185	90	95	22	8	14
0004	Ward No. 4		40	265	135	130	30	14	16
0005	Ward No. 5		68	510	257	253	53	30	23
0006	Ward No. 6		32	273	139	134	34	19	15
0007	Ward No. 7		63	420	214	206	45	26	19
0008	Ward No. 8		80	564	299	265	62	34	28
0009	Ward No. 9		171	854	467	387	113	64	49
0010	Ward No. 10		48	354	174	180	37	14	23
0011	Ward No. 11		51	396	193	203	48	24	24
0012	Ward No. 12		44	328	153	175	42	19	23
0013	Ward No. 13		47	377	187	190	37	20	17
0014	Ward No. 14		245	2,452	1,678	774	210	102	108
0015	Ward No. 15		82	489	241	248	54	32	22
0016	Ward No. 16		769	6,855	4,716	2,139	511	231	280

## PRIMARY CENSUS ABSTRACT

## CENSUS ABSTRACT

Scheduled Castes population			Scheduled Tribes population			Literates			Name of Town/ Ward
Persons	Males	Females	Persons	Males	Females	Persons	Males	Females	
11	12	13	14	15	16	17	18	19	
<b>8</b>	<b>7</b>	<b>1</b>	<b>11,496</b>	<b>5,959</b>	<b>5,537</b>	<b>12,340</b>	<b>8,627</b>	<b>3,713</b>	<b>Kargil (MC)</b>
-	-	-	414	226	188	722	421	301	Ward No. 1
4	4	-	642	382	260	679	442	237	Ward No. 2
-	-	-	185	90	95	133	73	60	Ward No. 3
-	-	-	256	130	126	188	107	81	Ward No. 4
-	-	-	507	255	252	391	219	172	Ward No. 5
-	-	-	269	136	133	180	104	76	Ward No. 6
-	-	-	411	210	201	293	171	122	Ward No. 7
-	-	-	555	294	261	402	241	161	Ward No. 8
4	3	1	767	412	355	623	364	259	Ward No. 9
-	-	-	346	170	176	250	151	99	Ward No. 10
-	-	-	385	186	199	299	155	144	Ward No. 11
-	-	-	328	153	175	212	118	94	Ward No. 12
-	-	-	377	187	190	263	154	109	Ward No. 13
-	-	-	1,569	815	754	1,878	1,481	397	Ward No. 14
-	-	-	479	233	246	337	183	154	Ward No. 15
-	-	-	4,006	2,080	1,926	5,490	4,243	1,247	Ward No. 16

## URBAN PRIMARY

Location code		Illiterates			Total workers			Main workers		
number	Name of Town/ Ward	Persons	Males	Females	Persons	Males	Females	Persons	Males	Females
1	2	20	21	22	23	24	25	26	27	28
<b>800048</b>	<b>Kargil (MC)</b>	<b>3,998</b>	<b>1,455</b>	<b>2,543</b>	<b>7,413</b>	<b>6,135</b>	<b>1,278</b>	<b>6,102</b>	<b>5,365</b>	<b>737</b>
0001	Ward No. 1	295	135	160	372	262	110	304	207	97
0002	Ward No. 2	320	141	179	366	264	102	322	239	83
0003	Ward No. 3	52	17	35	49	34	15	47	32	15
0004	Ward No. 4	77	28	49	76	56	20	58	42	16
0005	Ward No. 5	119	38	81	230	99	131	113	80	33
0006	Ward No. 6	93	35	58	79	57	22	66	50	16
0007	Ward No. 7	127	43	84	96	76	20	81	62	19
0008	Ward No. 8	162	58	104	201	145	56	159	118	41
0009	Ward No. 9	231	103	128	278	227	51	266	216	50
0010	Ward No. 10	104	23	81	88	79	9	72	64	8
0011	Ward No. 11	97	38	59	85	60	25	84	59	25
0012	Ward No. 12	116	35	81	40	34	6	40	34	6
0013	Ward No. 13	114	33	81	61	53	8	60	52	8
0014	Ward No. 14	574	197	377	1,478	1,190	288	1,005	970	35
0015	Ward No. 15	152	58	94	181	102	79	127	92	35
0016	Ward No. 16	1,365	473	892	3,733	3,397	336	3,298	3,048	250

## PRIMARY CENSUS ABSTRACT

## CENSUS ABSTRACT

Industrial category of main workers													
Cultivators			Agricultural labourers			Household industry workers			Other workers			Name of Town/ Ward	
Persons	Males	Females	Persons	Males	Females	Persons	Males	Females	Persons	Males	Females		
29	30	31	32	33	34	35	36	37	38	39	40	2	
<b>62</b>	<b>42</b>	<b>20</b>	<b>20</b>	<b>16</b>	<b>4</b>	<b>10</b>	<b>8</b>	<b>2</b>	<b>6,010</b>	<b>5,299</b>	<b>711</b>	<b>Kargil (MC)</b>	
10	9	1	-	-	-	1	1	-	293	197	96	Ward No. 1	
2	2	-	4	4	-	1	1	-	315	232	83	Ward No. 2	
1	1	-	1	1	-	-	-	-	45	30	15	Ward No. 3	
-	-	-	-	-	-	-	-	-	58	42	16	Ward No. 4	
4	4	-	1	1	-	3	2	1	105	73	32	Ward No. 5	
1	-	1	1	-	1	1	1	-	63	49	14	Ward No. 6	
2	1	1	1	1	-	-	-	-	78	60	18	Ward No. 7	
1	-	1	4	2	2	1	-	1	153	116	37	Ward No. 8	
8	8	-	-	-	-	-	-	-	258	208	50	Ward No. 9	
1	1	-	-	-	-	-	-	-	71	63	8	Ward No. 10	
-	-	-	-	-	-	-	-	-	84	59	25	Ward No. 11	
-	-	-	-	-	-	-	-	-	40	34	6	Ward No. 12	
-	-	-	-	-	-	-	-	-	60	52	8	Ward No. 13	
7	4	3	4	4	-	2	2	-	992	960	32	Ward No. 14	
12	1	11	-	-	-	1	1	-	114	90	24	Ward No. 15	
13	11	2	4	3	1	-	-	-	3,281	3,034	247	Ward No. 16	

## URBAN PRIMARY

## Industrial category

Location code number	Name of Town/ Ward	Marginal workers			Cultivators			Agricultural labourers		
		Persons	Males	Females	Persons	Males	Females	Persons	Males	Females
1	2	41	42	43	44	45	46	47	48	49
<b>800048</b>	<b>Kargil (MC)</b>	<b>1,311</b>	<b>770</b>	<b>541</b>	<b>365</b>	<b>73</b>	<b>292</b>	<b>28</b>	<b>18</b>	<b>10</b>
0001	Ward No. 1	68	55	13	2	2	-	3	2	1
0002	Ward No. 2	44	25	19	1	1	-	3	1	2
0003	Ward No. 3	2	2	-	-	-	-	-	-	-
0004	Ward No. 4	18	14	4	14	11	3	-	-	-
0005	Ward No. 5	117	19	98	23	2	21	3	-	3
0006	Ward No. 6	13	7	6	1	-	1	-	-	-
0007	Ward No. 7	15	14	1	-	-	-	2	2	-
0008	Ward No. 8	42	27	15	-	-	-	3	2	1
0009	Ward No. 9	12	11	1	2	2	-	-	-	-
0010	Ward No. 10	16	15	1	1	1	-	-	-	-
0011	Ward No. 11	1	1	-	-	-	-	1	1	-
0012	Ward No. 12	-	-	-	-	-	-	-	-	-
0013	Ward No. 13	1	1	-	-	-	-	-	-	-
0014	Ward No. 14	473	220	253	282	51	231	7	5	2
0015	Ward No. 15	54	10	44	36	2	34	1	-	1
0016	Ward No. 16	435	349	86	3	1	2	5	5	-

## PRIMARY CENSUS ABSTRACT

## CENSUS ABSTRACT

of marginal workers

Household industry workers			Other workers			Non-workers			Name of Town/ Ward	Location code number
Persons	Males	Females	Persons	Males	Females	Persons	Males	Females		
50	51	52	53	54	55	56	57	58	2	1
<b>93</b>	<b>19</b>	<b>74</b>	<b>825</b>	<b>660</b>	<b>165</b>	<b>8,925</b>	<b>3,947</b>	<b>4,978</b>	<b>Kargil (MC)</b>	<b>800048</b>
3	3	-	60	48	12	645	294	351	Ward No. 1	0001
2	-	2	38	23	15	633	319	314	Ward No. 2	0002
-	-	-	2	2	-	136	56	80	Ward No. 3	0003
-	-	-	4	3	1	189	79	110	Ward No. 4	0004
74	14	60	17	3	14	280	158	122	Ward No. 5	0005
-	-	-	12	7	5	194	82	112	Ward No. 6	0006
-	-	-	13	12	1	324	138	186	Ward No. 7	0007
11	1	10	28	24	4	363	154	209	Ward No. 8	0008
-	-	-	10	9	1	576	240	336	Ward No. 9	0009
-	-	-	15	14	1	266	95	171	Ward No. 10	0010
-	-	-	-	-	-	311	133	178	Ward No. 11	0011
-	-	-	-	-	-	288	119	169	Ward No. 12	0012
-	-	-	1	1	-	316	134	182	Ward No. 13	0013
3	1	2	181	163	18	974	488	486	Ward No. 14	0014
-	-	-	17	8	9	308	139	169	Ward No. 15	0015
-	-	-	427	343	84	3,122	1,319	1,803	Ward No. 16	0016



## **Section – II**

**Tables based on Households  
Amenities and Assets  
(Rural /Urban) at District and  
Sub-District level**





**Table -1: Households by Ownership Status and by Number of Dwelling rooms occupied in the District, 2011**

Name of district	Ownership status	Number of dwelling rooms	Number of households								
			Total			Scheduled Castes			Scheduled Tribes		
			Total	Rural	Urban	Total	Rural	Urban	Total	Rural	Urban
1	2	3	4	5	6	7	8	9	10	11	12
District - Kargil (01004)	Owned	No exclusive room	326	314	12	4	3	1	224	220	4
		One room	2,155	2,024	131	40	39	1	2,106	1,980	126
		Two rooms	4,923	4,634	289	25	24	1	4,883	4,596	287
		Three rooms	3,810	3,508	302	19	17	2	3,781	3,484	297
	Rented	3+ rooms	5,432	4,571	861	60	24	36	5,356	4,534	822
		No exclusive room	102	9	93	2	1	1	44	2	42
		One room	977	120	857	15	5	10	782	73	709
		Two rooms	241	97	144	1	1	-	218	86	132
	Others	Three rooms	57	33	24	-	-	-	51	28	23
		3+ rooms	42	24	18	2	-	2	39	24	15
		No exclusive room	12	7	5	-	-	-	10	7	3
		One room	72	54	18	3	3	-	64	49	15
	<b>Total</b>	Two rooms	40	28	12	1	1	-	32	27	5
		Three rooms	14	13	1	-	-	-	14	13	1
		3+ rooms	9	6	3	1	1	-	7	5	2
		<b>No exclusive room</b>	<b>440</b>	<b>330</b>	<b>110</b>	<b>6</b>	<b>4</b>	<b>2</b>	<b>278</b>	<b>229</b>	<b>49</b>
<b>One room</b>		<b>3,204</b>	<b>2,198</b>	<b>1,006</b>	<b>58</b>	<b>47</b>	<b>11</b>	<b>2,952</b>	<b>2,102</b>	<b>850</b>	
	<b>Two rooms</b>	<b>5,204</b>	<b>4,759</b>	<b>445</b>	<b>27</b>	<b>26</b>	<b>1</b>	<b>5,133</b>	<b>4,709</b>	<b>424</b>	
	<b>Three rooms</b>	<b>3,881</b>	<b>3,554</b>	<b>327</b>	<b>19</b>	<b>17</b>	<b>2</b>	<b>3,846</b>	<b>3,525</b>	<b>321</b>	
	<b>3+ rooms</b>	<b>5,483</b>	<b>4,601</b>	<b>882</b>	<b>63</b>	<b>25</b>	<b>38</b>	<b>5,402</b>	<b>4,563</b>	<b>839</b>	

Data Source:-Census of India, 2011, HH- series Tables on Houses, Household amenities and assets.

**Table - 2 : Percentage distribution of Households living in Permanent,**

Sl. No.	Name of Sub - District	Total			Permanent
		Permanent	Semi permanent	Temporary	
1	2	3	4	5	6
1	Sub-District - Kargil (0100400013)	760 (6.91%)	5,852 (53.24%)	4,359 (39.66%)	282 (3.43%)
2	Sub-District - Sanku (0100400014)	79 (1.6%)	3,526 (71.45%)	1,321 (26.77%)	79 (1.6%)
3	Sub-District - Zaskar (0100400015)	23 (1.01%)	741 (32.41%)	1,521 (66.54%)	23 (1.01%)
<b>District - Kargil (01004)</b>		<b>862 (4.73%)</b>	<b>10,119 (55.56%)</b>	<b>7,201 (39.54%)</b>	<b>384 (2.49%)</b>

1.Data Source:-Census of India, 2011, HH- series Tables on Houses, Household amenities and assets.

**Note :**

Permanent : Permanent houses refer to those houses whose walls & roofs are made of pucca materials, i.e., where burnt bricks, G.I. Sheets or other metal sheets, stone, cement, concrete is used for wall and tiles, slate, shingle, corrugated iron, zinc or other metal sheets, asbestos sheets, bricks, lime and stone and RBC/RCC concrete are used for roof.

Semi Permanent : Semi permanent houses refer to those houses made of other types of materials.

Temporary : Temporary houses refer to those houses having wall and roofs made of Kutcha materials, i.e., where, grass, leaves, reeds, bamboo, mud and unburnt bricks are used for the construction of walls and grass, leaves, reeds, bamboo thatch, mud, unburnt bricks and wood etc. are used for roofs.

Semi permanent and Temporary Houses , 2011					
Rural		Urban			Name of Sub-District
Semi permanent	Temporary	Permanent	Semi permanent	Temporary	
7	8	9	10	11	2
4,268 (51.92%)	3,666 (44.59%)	478 (17.26%)	1,584 (57.18%)	693 (25.02%)	Sub-District - Kargil (0100400013)
3,526 (71.45%)	1,321 (26.77%)	0 (0%)	0 (0%)	0 (0%)	Sub-District - Sanku (0100400014)
741 (32.41%)	1,521 (66.54%)	0 (0%)	0 (0%)	0 (0%)	Sub-District - Zanskar (0100400015)
<b>8,535 (55.27%)</b>	<b>6,508 (42.14%)</b>	<b>478 (17.26%)</b>	<b>1,584 (57.18%)</b>	<b>693 (25.02%)</b>	<b>District - Kargil (01004)</b>

**Table -3 : Number and Percentage of Households**

Sl. No.	Name of Sub-District	Total/ Rural/ Urban	Total Number of households	Number and percentage of Household			
				Tap water from treated source	Tap water from untreated source	Covered well	Un-covered well
1	2	3	4	5	6	7	8
1	Sub-District - Kargil (0100400013)	Total	10,991	1,504 (13.68%)	3,867 (35.18%)	67 (0.61%)	1 (0.01%)
		Rural	8,221	874 (10.63%)	3,182 (38.71%)	60 (0.73%)	0 (0%)
		Urban	2,770	630 (22.74%)	685 (24.73%)	7 (0.25%)	1 (0.04%)
2	Sub-District - Sanku (0100400014)	Total	4,935	347 (7.03%)	3,704 (75.06%)	11 (0.22%)	0 (0%)
		Rural	4,935	347 (7.03%)	3,704 (75.06%)	11 (0.22%)	0 (0%)
		Urban	0 (0%)	0 (0%)	0 (0%)	0 (0%)	0 (0%)
3	Sub-District - Zaskar (0100400015)	Total	2,286	83 (3.63%)	1,264 (55.29%)	7 (0.31%)	0 (0%)
		Rural	2,286	83 (3.63%)	1,264 (55.29%)	7 (0.31%)	0 (0%)
		Urban	0 (0%)	0 (0%)	0 (0%)	0 (0%)	0 (0%)
<b>District - Kargil (01004)</b>		<b>Total</b>	<b>18,212</b>	<b>1,934 (10.62%)</b>	<b>8,835 (48.51%)</b>	<b>85 (0.47%)</b>	<b>1 (0.01%)</b>
		<b>Rural</b>	<b>15,442</b>	<b>1,304 (8.44%)</b>	<b>8,150 (52.78%)</b>	<b>78 (0.51%)</b>	<b>0 (0%)</b>
		<b>Urban</b>	<b>2,770</b>	<b>630 (22.74%)</b>	<b>685 (24.73%)</b>	<b>7 (0.25%)</b>	<b>1 (0.04%)</b>

Note: Percentage is given in brackets after the number of households.

Data Source:-Census of India, 2011, HH- series Tables on Houses, Household amenities and assets.

<b>by main source of Drinking water, 2011.</b>							
having following source of drinking water						Total/ Rural/ Urban	Name of Sub-District
Handpump	Tubewell/borehole	Spring	River/ canal	Tank/ pond/ lake	Other Sources		
9	10	11	12	13	14	3	2
2,489 (22.65%)	16 (0.15%)	182 (1.66%)	1,967 (17.9%)	151 (1.37%)	747 (6.8%)	Total	Sub-District - Kargil
1,411 (17.16%)	11 (0.13%)	182 (2.21%)	1,926 (23.43%)	124 (1.51%)	451 (5.49%)	Rural	(0100400013)
1,078 (38.92%)	5 (0.18%)	0 (0%)	41 (1.48%)	27 (0.97%)	296 (10.69%)	Urban	
485 (9.83%)	2 (0.04%)	32 (0.65%)	273 (5.53%)	2 (0.04%)	79 (1.6%)	Total	Sub-District - Sanku
485 (9.83%)	2 (0.04%)	32 (0.65%)	273 (5.53%)	2 (0.04%)	79 (1.6%)	Rural	(0100400014)
0 (0%)	0 (0%)	0 (0%)	0 (0%)	0 (0%)	0 (0%)	Urban	
296 (12.95%)	1 (0.04%)	109 (4.77%)	401 (17.54%)	44 (1.92%)	81 (3.54%)	Total	Sub-District - Zanskar
296 (12.95%)	1 (0.04%)	109 (4.77%)	401 (17.54%)	44 (1.92%)	81 (3.54%)	Rural	(0100400015)
0 (0%)	0 (0%)	0 (0%)	0 (0%)	0 (0%)	0 (0%)	Urban	
<b>3,270 (17.96%)</b>	<b>19 (0.1%)</b>	<b>323 (1.77%)</b>	<b>2,641 (14.5%)</b>	<b>197 (1.08%)</b>	<b>907 (4.98%)</b>	<b>Total</b>	<b>District - Kargil (01004)</b>
<b>2,192 (14.2%)</b>	<b>14 (0.09%)</b>	<b>323 (2.09%)</b>	<b>2,600 (16.84%)</b>	<b>170 (1.1%)</b>	<b>611 (3.96%)</b>	<b>Rural</b>	
<b>1,078 (38.92%)</b>	<b>5 (0.18%)</b>	<b>0 (0%)</b>	<b>41 (1.48%)</b>	<b>27 (0.97%)</b>	<b>296 (10.69%)</b>	<b>Urban</b>	

**Table- 4 : Number and Percentage of Households**

Sl. No.	Name of Sub-District	Total/Rural/Urban	Total number of households	Number and Percentage of households		
				Electricity	Kerosene	Solar
1	2	3	4	5	6	7
1	Sub-District - Kargil (0100400013)	Total	10,991	10,513 (95.65%)	214 (1.95%)	254 (2.31%)
		Rural	8,221	7,757 (94.36%)	203 (2.47%)	253 (3.08%)
		Urban	2,770	2,756 (99.49%)	11 (0.4%)	1 (0.04%)
2	Sub-District - Sanku (0100400014)	Total	4,935	4,264 (86.4%)	224 (4.54%)	414 (8.39%)
		Rural	4,935	4,264 (86.4%)	224 (4.54%)	414 (8.39%)
		Urban	0 (0%)	0 (0%)	0 (0%)	0 (0%)
3	Sub-District - Zaskar (0100400015)	Total	2,286	1,047 (45.8%)	87 (3.81%)	1,143 (50%)
		Rural	2,286	1,047 (45.8%)	87 (3.81%)	1,143 (50%)
		Urban	0 (0%)	0 (0%)	0 (0%)	0 (0%)
<b>District - Kargil (01004)</b>		<b>Total</b>	<b>18,212</b>	<b>15,824 (86.89%)</b>	<b>525 (2.88%)</b>	<b>1,811 (9.94%)</b>
		<b>Rural</b>	<b>15,442</b>	<b>13,068 (84.63%)</b>	<b>514 (3.33%)</b>	<b>1,810 (11.72%)</b>
		<b>Urban</b>	<b>2,770</b>	<b>2,756 (99.49%)</b>	<b>11 (0.4%)</b>	<b>1 (0.04%)</b>

Note: Percentage is given in brackets after the number of households.

Data Source:-Census of India, 2011, HH- series Tables on Houses, Household amenities and assets.

<b>by main source of Lighting, 2011.</b>				
having following main source of lighting			Total/ Rural/ Urban	Name of Sub-District
Other oil	Any other	No lighting		
8	9	10	3	2
3 (0.03%)	3 (0.03%)	4 (0.04%)	Total	Sub-District - Kargil (0100400013)
1 (0.01%)	3 (0.04%)	4 (0.05%)	Rural	
2 (0.07%)	0 (0%)	0 (0%)	Urban	
6 (0.12%)	3 (0.06%)	24 (0.49%)	Total	Sub-District - Sanku (0100400014)
6 (0.12%)	3 (0.06%)	24 (0.49%)	Rural	
0 (0%)	0 (0%)	0 (0%)	Urban	
1 (0.04%)	2 (0.09%)	6 (0.26%)	Total	Sub-District - Zanskar (0100400015)
1 (0.04%)	2 (0.09%)	6 (0.26%)	Rural	
0 (0%)	0 (0%)	0 (0%)	Urban	
<b>10 (0.05%)</b>	<b>8 (0.04%)</b>	<b>34 (0.19%)</b>	<b>Total</b>	<b>District - Kargil (01004)</b>
<b>8 (0.05%)</b>	<b>8 (0.05%)</b>	<b>34 (0.22%)</b>	<b>Rural</b>	
<b>2 (0.07%)</b>	<b>0 (0%)</b>	<b>0 (0%)</b>	<b>Urban</b>	



**Table -5 : Number and Percentage of Households**

Sl. No.	Name of Sub-District	Total/Rural/Urban	Total number of households	Number and percentage of households			
				Flush/Pour latrine			Pit
				Piped sewer system	Septic tank	Other system	With slab/Ventilated improved pit
1	2	3	4	5	6	7	8
1	Sub-District - Kargil (0100400013)	Total	10,991	391 (3.56%)	986 (8.97%)	6,361 (57.87%)	102 (0.93%)
		Rural	8,221	93 (1.13%)	107 (1.3%)	4,917 (59.81%)	97 (1.18%)
		Urban	2,770	298 (10.76%)	879 (31.73%)	1,444 (52.13%)	5 (0.18%)
2	Sub-District - Sanku (0100400014)	Total	4,935	59 (1.2%)	57 (1.16%)	3,081 (62.43%)	3 (0.06%)
		Rural	4,935	59 (1.2%)	57 (1.16%)	3,081 (62.43%)	3 (0.06%)
		Urban	0 (0%)	0 (0%)	0 (0%)	0 (0%)	0 (0%)
3	Sub-District - Zaskar (0100400015)	Total	2,286	56 (2.45%)	54 (2.36%)	168 (7.35%)	62 (2.71%)
		Rural	2,286	56 (2.45%)	54 (2.36%)	168 (7.35%)	62 (2.71%)
		Urban	0 (0%)	0 (0%)	0 (0%)	0 (0%)	0 (0%)
<b>District - Kargil (01004)</b>		<b>Total</b>	<b>18,212</b>	<b>506 (2.78%)</b>	<b>1,097 (6.02%)</b>	<b>9,610 (52.77%)</b>	<b>167 (0.92%)</b>
		<b>Rural</b>	<b>15,442</b>	<b>208 (1.35%)</b>	<b>218 (1.41%)</b>	<b>8,166 (52.88%)</b>	<b>162 (1.05%)</b>
		<b>Urban</b>	<b>2,770</b>	<b>298 (10.76%)</b>	<b>879 (31.73%)</b>	<b>1,444 (52.13%)</b>	<b>5 (0.18%)</b>

Note: Percentage is given in brackets after the number of households.

Data Source:-Census of India, 2011, HH- series Tables on Houses, Household amenities and assets.

<b>by type of Latrine facility, 2011</b>							
having following type of latrine facility						Total/ Rural/ Urban	Name of Sub-District
Latrine	Night Soil disposed into open drain	Service Latrine		No latrine within premises			
Without slab/open pit			Night soil removed by human	Night soil serviced by animals	Public Latrine	Open	
9	10	11	12	13	14	3	2
73 (0.66%)	36 (0.33%)	2,593 (23.59%)	27 (0.25%)	51 (0.46%)	371 (3.38%)	Total	Sub-District - Kargil (0100400013)
72 (0.88%)	35 (0.43%)	2,543 (30.93%)	5 (0.06%)	47 (0.57%)	305 (3.71%)	Rural	
1 (0.04%)	1 (0.04%)	50 (1.81%)	22 (0.79%)	4 (0.14%)	66 (2.38%)	Urban	
4 (0.08%)	0 (0%)	1,626 (32.95%)	2 (0.04%)	19 (0.39%)	84 (1.7%)	Total	Sub-District - Sanku
4 (0.08%)	0 (0%)	1,626 (32.95%)	2 (0.04%)	19 (0.39%)	84 (1.7%)	Rural	(0100400014)
0 (0%)	0 (0%)	0 (0%)	0 (0%)	0 (0%)	0 (0%)	Urban	
1,460 (63.87%)	1 (0.04%)	420 (18.37%)	27 (1.18%)	11 (0.48%)	27 (1.18%)	Total	Sub-District - Zanskar
1,460 (63.87%)	1 (0.04%)	420 (18.37%)	27 (1.18%)	11 (0.48%)	27 (1.18%)	Rural	(0100400015)
0 (0%)	0 (0%)	0 (0%)	0 (0%)	0 (0%)	0 (0%)	Urban	
<b>1,537 (8.44%)</b>	<b>37 (0.2%)</b>	<b>4,639 (25.47%)</b>	<b>56 (0.31%)</b>	<b>81 (0.44%)</b>	<b>482 (2.65%)</b>	<b>Total</b>	<b>District - Kargil (01004)</b>
<b>1,536 (9.95%)</b>	<b>36 (0.23%)</b>	<b>4,589 (29.72%)</b>	<b>34 (0.22%)</b>	<b>77 (0.5%)</b>	<b>416 (2.69%)</b>	<b>Rural</b>	
<b>1 (0.04%)</b>	<b>1 (0.04%)</b>	<b>50 (1.81%)</b>	<b>22 (0.79%)</b>	<b>4 (0.14%)</b>	<b>66 (2.38%)</b>	<b>Urban</b>	

<b>Table -6 : Number and Percentage of Households by type of Drainage connectivity for waste water outlet , 2011</b>						
Sl. No.	Name of Sub-District	Total/ Rural/ Urban	Total number of households	Number and Percentage of households by type of drainage connectivity for waste water outlet		
				Closed drainage	Open drainage	No drainage
1	2	3	4	5	6	7
1	Sub-District - Kargil (0100400013)	Total	10,991	1,720 (15.65%)	2,020 (18.38%)	7,251 (65.97%)
		Rural	8,221	588 (7.15%)	1,538 (18.71%)	6,095 (74.14%)
		Urban	2,770	1,132 (40.87%)	482 (17.4%)	1,156 (41.73%)
2	Sub-District - Sanku (0100400014)	Total	4,935	666 (13.5%)	1,242 (25.17%)	3,027 (61.34%)
		Rural	4,935	666 (13.5%)	1,242 (25.17%)	3,027 (61.34%)
		Urban	0	0 (0%)	0 (0%)	0 (0%)
3	Sub-District - Zaskar (0100400015)	Total	2,286	134 (5.86%)	245 (10.72%)	1,907 (83.42%)
		Rural	2,286	134 (5.86%)	245 (10.72%)	1,907 (83.42%)
		Urban	0	0 (0%)	0 (0%)	0 (0%)
<b>District - Kargil (01004)</b>		<b>Total</b>	<b>18,212</b>	<b>2,520 (13.84%)</b>	<b>3,507 (19.26%)</b>	<b>12,185 (66.91%)</b>
		<b>Rural</b>	<b>15,442</b>	<b>1,388 (8.99%)</b>	<b>3,025 (19.59%)</b>	<b>11,029 (71.42%)</b>
		<b>Urban</b>	<b>2,770</b>	<b>1,132 (40.87%)</b>	<b>482 (17.4%)</b>	<b>1,156 (41.73%)</b>

Note: Percentage is given in brackets after the number of households.

Data Source:-Census of India, 2011, HH- series Tables on Houses, Household amenities and assets.

**Table -7 : Number and Percentage of Households by availability of Kitchen facility, 2011**

Sl. No.	Name of Sub-District	Total/Rural/Urban	Total number of households	Number and Percentage of households having kitchen				
				Cooking inside house		Cooking outside house		No cooking
				Has kitchen	Does not have kitchen	Has kitchen	Does not have kitchen	
1	2	3	4	5	6	7	8	9
1	Sub-District - Kargil (0100400013)	Total	10,991	9,436 (85.85%)	1,282 (11.66%)	103 (0.94%)	160 (1.46%)	10 (0.09%)
		Rural	8,221	7,246 (88.14%)	789 (9.6%)	35 (0.43%)	146 (1.78%)	5 (0.06%)
		Urban	2,770	2,190 (79.06%)	493 (17.8%)	68 (2.45%)	14 (0.51%)	5 (0.18%)
2	Sub-District - Sanku (0100400014)	Total	4,935	4,514 (91.47%)	305 (6.18%)	29 (0.59%)	85 (1.72%)	2 (0.04%)
		Rural	4,935	4,514 (91.47%)	305 (6.18%)	29 (0.59%)	85 (1.72%)	2 (0.04%)
		Urban	0	0 (0%)	0 (0%)	0 (0%)	0 (0%)	0 (0%)
3	Sub-District - Zaskar (0100400015)	Total	2,286	1,978 (86.53%)	236 (10.32%)	21 (0.92%)	50 (2.19%)	1 (0.04%)
		Rural	2,286	1,978 (86.53%)	236 (10.32%)	21 (0.92%)	50 (2.19%)	1 (0.04%)
		Urban	0	0 (0%)	0 (0%)	0 (0%)	0 (0%)	0 (0%)
	<b>District - Kargil (01004)</b>	<b>Total</b>	<b>18,212</b>	<b>15,928 (87.46%)</b>	<b>1,823 (10.01%)</b>	<b>153 (0.84%)</b>	<b>295 (1.62%)</b>	<b>13 (0.07%)</b>
		<b>Rural</b>	<b>15,442</b>	<b>13,738 (88.97%)</b>	<b>1,330 (8.61%)</b>	<b>85 (0.55%)</b>	<b>281 (1.82%)</b>	<b>8 (0.05%)</b>
		<b>Urban</b>	<b>2,770</b>	<b>2,190 (79.06%)</b>	<b>493 (17.8%)</b>	<b>68 (2.45%)</b>	<b>14 (0.51%)</b>	<b>5 (0.18%)</b>

Note: Percentage is given in brackets after the number of households.

Data Source:-Census of India, 2011, HH- series Tables on Houses, Household amenities and assets.

**Table -8 : Number and Percentage of Households**

Sl. No.	Name of Sub-District	Total/ Rural/ Urban	Total number of households	Number and percentage of households by			
				Firewood	Crop residue	Cowdung cake	Coal/ lignite/ charcoal
1	2	3	4	5	6	7	8
1	Sub-District - Kargil (0100400013)	Total	10,991	7,219 (65.68%)	84 (0.76%)	527 (4.79%)	2 (0.02%)
		Rural	8,221	6,356 (77.31%)	77 (0.94%)	523 (6.36%)	2 (0.02%)
		Urban	2,770	863 (31.16%)	7 (0.25%)	4 (0.14%)	0 (0%)
2	Sub-District - Sanku (0100400014)	Total	4,935	4,683 (94.89%)	46 (0.93%)	101 (2.05%)	1 (0.02%)
		Rural	4,935	4,683 (94.89%)	46 (0.93%)	101 (2.05%)	1 (0.02%)
		Urban	0	0 (0%)	0 (0%)	0 (0%)	0 (0%)
3	Sub-District - Zaskar (0100400015)	Total	2,286	667 (29.18%)	13 (0.57%)	1,004 (43.92%)	0 (0%)
		Rural	2,286	667 (29.18%)	13 (0.57%)	1,004 (43.92%)	0 (0%)
		Urban	0	0 (0%)	0 (0%)	0 (0%)	0 (0%)
<b>District - Kargil (01004)</b>		<b>Total</b>	<b>18,212</b>	<b>12,569 (69.01%)</b>	<b>143 (0.79%)</b>	<b>1,632 (8.96%)</b>	<b>3 (0.02%)</b>
		<b>Rural</b>	<b>15,442</b>	<b>11,706 (75.81%)</b>	<b>136 (0.88%)</b>	<b>1,628 (10.54%)</b>	<b>3 (0.02%)</b>
		<b>Urban</b>	<b>2,770</b>	<b>863 (31.16%)</b>	<b>7 (0.25%)</b>	<b>4 (0.14%)</b>	<b>0 (0%)</b>

Note: Percentage is given in brackets after the number of households.

Data Source:-Census of India, 2011, HH- series Tables on Houses, Household amenities and assets.

<b>by type of fuel used for Cooking, 2011</b>							
availability of fuel used for cooking						Total/ Rural/ Urban	Name of Sub-District
Kerosene	LPG/ PNG	Electricity	Bio-gas	Any other	No cooking		
9	10	11	12	13	14	3	2
136 (1.24%)	2,604 (23.69%)	0 (0%)	33 (0.3%)	376 (3.42%)	10 (0.09%)	Total	Sub-District - Kargil (0100400013)
33 (0.4%)	819 (9.96%)	0 (0%)	30 (0.36%)	376 (4.57%)	5 (0.06%)	Rural	
103 (3.72%)	1,785 (64.44%)	0 (0%)	3 (0.11%)	0 (0%)	5 (0.18%)	Urban	
12 (0.24%)	88 (1.78%)	1 (0.02%)	1 (0.02%)	0 (0%)	2 (0.04%)	Total	Sub-District - Sanku
12 (0.24%)	88 (1.78%)	1 (0.02%)	1 (0.02%)	0 (0%)	2 (0.04%)	Rural	(0100400014)
0 (0%)	0 (0%)	0 (0%)	0 (0%)	0 (0%)	0 (0%)	Urban	
4 (0.17%)	593 (25.94%)	1 (0.04%)	3 (0.13%)	0 (0%)	1 (0.04%)	Total	Sub-District - Zanskar
4 (0.17%)	593 (25.94%)	1 (0.04%)	3 (0.13%)	0 (0%)	1 (0.04%)	Rural	(0100400015)
0 (0%)	0 (0%)	0 (0%)	0 (0%)	0 (0%)	0 (0%)	Urban	
<b>152 (0.83%)</b>	<b>3,285 (18.04%)</b>	<b>2 (0.01%)</b>	<b>37 (0.2%)</b>	<b>376 (2.06%)</b>	<b>13 (0.07%)</b>	<b>Total</b>	<b>District - Kargil (01004)</b>
<b>49 (0.32%)</b>	<b>1,500 (9.71%)</b>	<b>2 (0.01%)</b>	<b>34 (0.22%)</b>	<b>376 (2.43%)</b>	<b>8 (0.05%)</b>	<b>Rural</b>	
<b>103 (3.72%)</b>	<b>1,785 (64.44%)</b>	<b>0 (0%)</b>	<b>3 (0.11%)</b>	<b>0 (0%)</b>	<b>5 (0.18%)</b>	<b>Urban</b>	

**Table -9 : Number and Percentage of Households availing Banking services and**

Sl. No.	Name of Sub-District	Total/ Rural/ Urban	Total number of households	Total number of households availing banking services	Number and percentage of households			
					Radio/ Transistor	Television	Computer/ laptop- With Internet	Computer/ laptop- Without Internet
1	2	3	4	5	6	7	8	9
1	Sub-District - Kargil (0100400013)	Total	10,991	9,594 (87.29%)	7,339 (66.77%)	5,829 (53.03%)	196 (1.78%)	534 (4.86%)
		Rural	8,221	7,167 (87.18%)	5,491 (66.79%)	3,846 (46.78%)	100 (1.22%)	333 (4.05%)
		Urban	2,770	2,427 (87.62%)	1,848 (66.71%)	1,983 (71.59%)	96 (3.47%)	201 (7.26%)
2	Sub-District - Sanku (0100400014)	Total	4,935	3,124 (63.3%)	2,062 (41.78%)	1,224 (24.8%)	19 (0.39%)	147 (2.98%)
		Rural	4,935	3,124 (63.3%)	2,062 (41.78%)	1,224 (24.8%)	19 (0.39%)	147 (2.98%)
		Urban	0	0 (0%)	0 (0%)	0 (0%)	0 (0%)	0 (0%)
3	Sub-District - Zanskar (0100400015)	Total	2,286	1,360 (59.49%)	1,494 (65.35%)	955 (41.78%)	20 (0.87%)	89 (3.89%)
		Rural	2,286	1,360 (59.49%)	1,494 (65.35%)	955 (41.78%)	20 (0.87%)	89 (3.89%)
		Urban	0	0 (0%)	0 (0%)	0 (0%)	0 (0%)	0 (0%)
<b>District - Kargil (01004)</b>	<b>Total</b>	<b>18,212</b>	<b>14,078 (77.3%)</b>	<b>10,895 (59.82%)</b>	<b>8,008 (43.97%)</b>	<b>235 (1.29%)</b>	<b>770 (4.23%)</b>	
		<b>15,442</b>	<b>11,651 (75.45%)</b>	<b>9,047 (58.59%)</b>	<b>6,025 (39.02%)</b>	<b>139 (0.9%)</b>	<b>569 (3.68%)</b>	
		<b>2,770</b>	<b>2,427 (87.62%)</b>	<b>1,848 (66.71%)</b>	<b>1,983 (71.59%)</b>	<b>96 (3.47%)</b>	<b>201 (7.26%)</b>	

Note: Percentage is given in brackets after the number of households.

Data Source:-Census of India, 2011, HH- series Tables on Houses, Household amenities and assets.

**number of Households having each of the specified assets in, 2011**

having each of the following specified assets							Total/ Rural/ Urban	Name of Sub-District
Land line Telephone	Mobile Telephone	Both Land line and Mobile Telephone	Bicycle	Scooter/ Motor Cycle/ Moped	Car/ Jeep/ Van	None of the specified asset		
10	11	12	13	14	15	16	3	2
629 (5.72%)	5,415 (49.27%)	1,617 (14.71%)	389 (3.54%)	517 (4.7%)	1,530 (13.92%)	1,188 (10.81%)	Total	Sub-District - Kargil
578 (7.03%)	3,391 (41.25%)	1,234 (15.01%)	304 (3.7%)	431 (5.24%)	1,042 (12.67%)	1,058 (12.87%)	Rural	(0100400013)
51 (1.84%)	2,024 (73.07%)	383 (13.83%)	85 (3.07%)	86 (3.1%)	488 (17.62%)	130 (4.69%)	Urban	
226 (4.58%)	1,426 (28.9%)	191 (3.87%)	80 (1.62%)	76 (1.54%)	192 (3.89%)	1,861 (37.71%)	Total	Sub-District - Sanku
226 (4.58%)	1,426 (28.9%)	191 (3.87%)	80 (1.62%)	76 (1.54%)	192 (3.89%)	1,861 (37.71%)	Rural	(0100400014)
0 (0%)	0 (0%)	0 (0%)	0 (0%)	0 (0%)	0 (0%)	0 (0%)	Urban	
44 (1.92%)	892 (39.02%)	122 (5.34%)	19 (0.83%)	59 (2.58%)	125 (5.47%)	489 (21.39%)	Total	Sub-District - Zanskar
44 (1.92%)	892 (39.02%)	122 (5.34%)	19 (0.83%)	59 (2.58%)	125 (5.47%)	489 (21.39%)	Rural	(0100400015)
0 (0%)	0 (0%)	0 (0%)	0 (0%)	0 (0%)	0 (0%)	0 (0%)	Urban	
<b>899 (4.94%)</b>	<b>7,733 (42.46%)</b>	<b>1,930 (10.6%)</b>	<b>488 (2.68%)</b>	<b>652 (3.58%)</b>	<b>1,847 (10.14%)</b>	<b>3,538 (19.43%)</b>	<b>Total</b>	<b>District - Kargil</b>
<b>848 (5.49%)</b>	<b>5,709 (36.97%)</b>	<b>1,547 (10.02%)</b>	<b>403 (2.61%)</b>	<b>566 (3.67%)</b>	<b>1,359 (8.8%)</b>	<b>3,408 (22.07%)</b>	<b>Rural</b>	<b>(01004)</b>
<b>51 (1.84%)</b>	<b>2,024 (73.07%)</b>	<b>383 (13.83%)</b>	<b>85 (3.07%)</b>	<b>86 (3.1%)</b>	<b>488 (17.62%)</b>	<b>130 (4.69%)</b>	<b>Urban</b>	





ORGI-JAMMU & KASHMIR  
English - (10-2011)



Directorate of Census Operations, Jammu & Kashmir  
Hotel Khyam Building  
Bishembar Nagar, Srinagar-190 001

Email: [dco-jam.rqi@censusindia.gov.in](mailto:dco-jam.rqi@censusindia.gov.in)  
Website: <http://www.censusindia.gov.in>

